



WE DELIVER

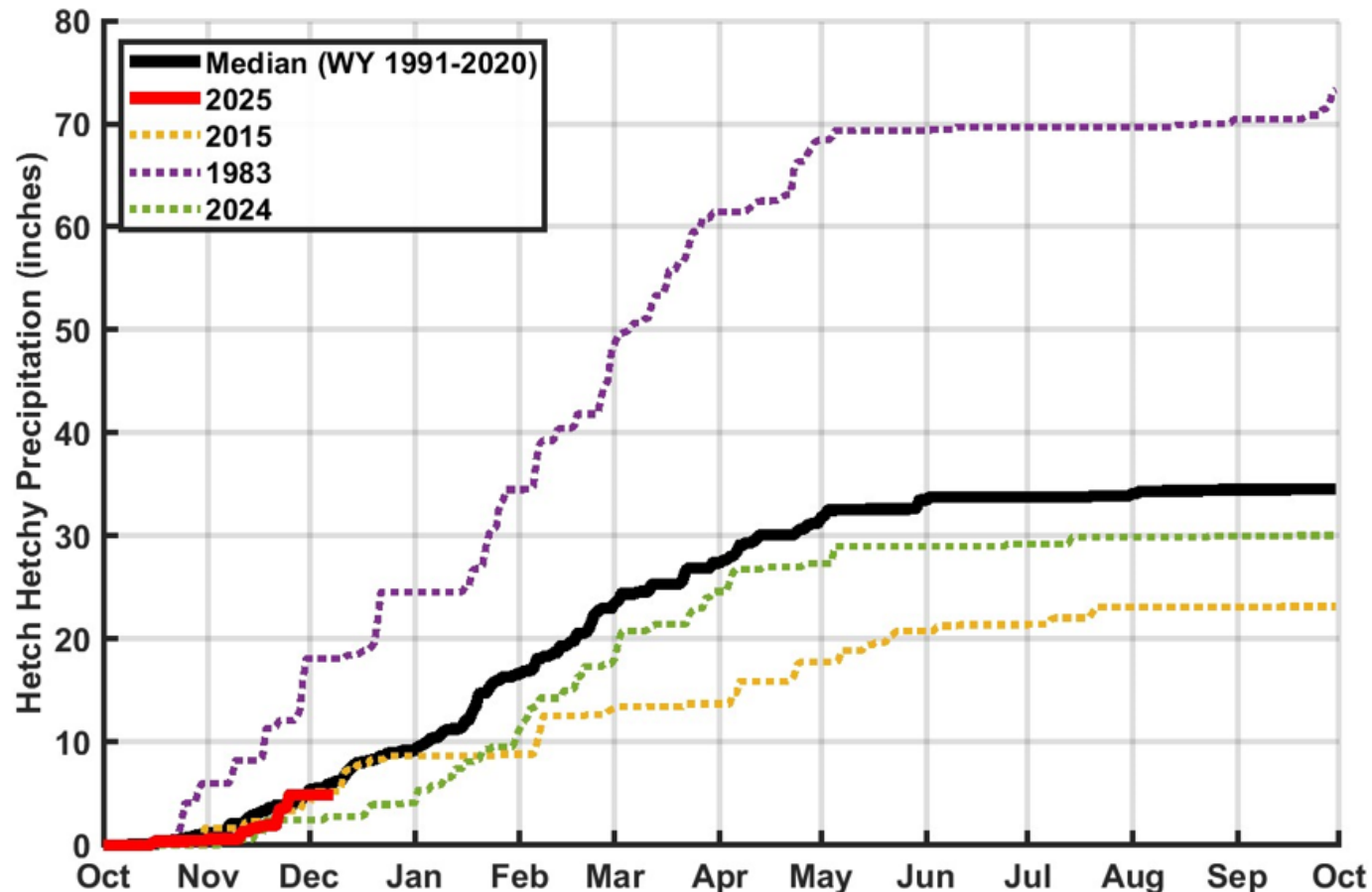
December 11, 2024



San Francisco
Water Power Sewer

Services of the San Francisco Public Utilities Commission

Precipitation at Hetch Hetchy Water Year 2023



A new water year (WY) starts every October. The graph charts cumulative precipitation at Hetch Hetchy Reservoir as the WY progresses. Precipitation is shown as a percentage of average, and curves for the current year and past year are shown. Cumulative precipitation curves for both dry and wet years are also shown, as well as a median. Why 1977? – It is the driest year on record. Why 1983? – It is the wettest year on record.



Reservoir Storage Levels

Storage as of:

9-Dec-2024

An acre foot is the volume of one acre of surface area (150 by 290 feet — 10 feet shorter than a football field) to a depth of one foot, also equal to approximately 325,851 gallons.

On average, 1 acre foot of water is enough to meet the demands of 4 people for a year. Tuolumne System storage includes Hetch Hetchy, Cherry (Lloyd), and Eleanor Reservoirs.

Local system includes Crystal Springs, Calaveras, San Antonio, San Andreas, and Pilarcitos Reservoirs.

Reservoir	Current Storage ^{1,2,3} (AF)	Maximum Storage ⁴ (AF)	Available Capacity (AF)	Percent of Maximum Storage	Normal Percent of Maximum Storage ⁵
<u>Tuolumne System</u>					
Hetch Hetchy	237,700	360,360	122,660	66.0%	67.4%
Cherry	247,500	273,345	25,845	90.5%	-
Eleanor	16,600	27,100	10,500	61.3%	-
Water Bank	566,466	570,000	3,534	99.4%	98.1%
Total Tuolumne Storage	1,068,266	1,230,805	162,539	86.8%	-
<u>Local System</u>					
Calaveras	78,351	96,670	18,319	81.1%	-
San Antonio	48,081	53,266	5,185	90.3%	-
Crystal Springs	52,085	68,953	16,868	75.5%	-
San Andreas	15,999	18,675	2,676	85.7%	-
Pilarcitos	2,311	3,125	814	73.9%	-
Total Local Storage	196,827	240,689	43,862	81.8%	-
Total System Storage	1,265,093	1,471,494	206,401	86.0%	78.1%
Total without water bank	698,627	901,494	202,867	77.5%	-

¹ Upcountry storage is the date's 8AM storage value taken from USGS data

² Water bank storage reported by HHWP for 12/08/2024

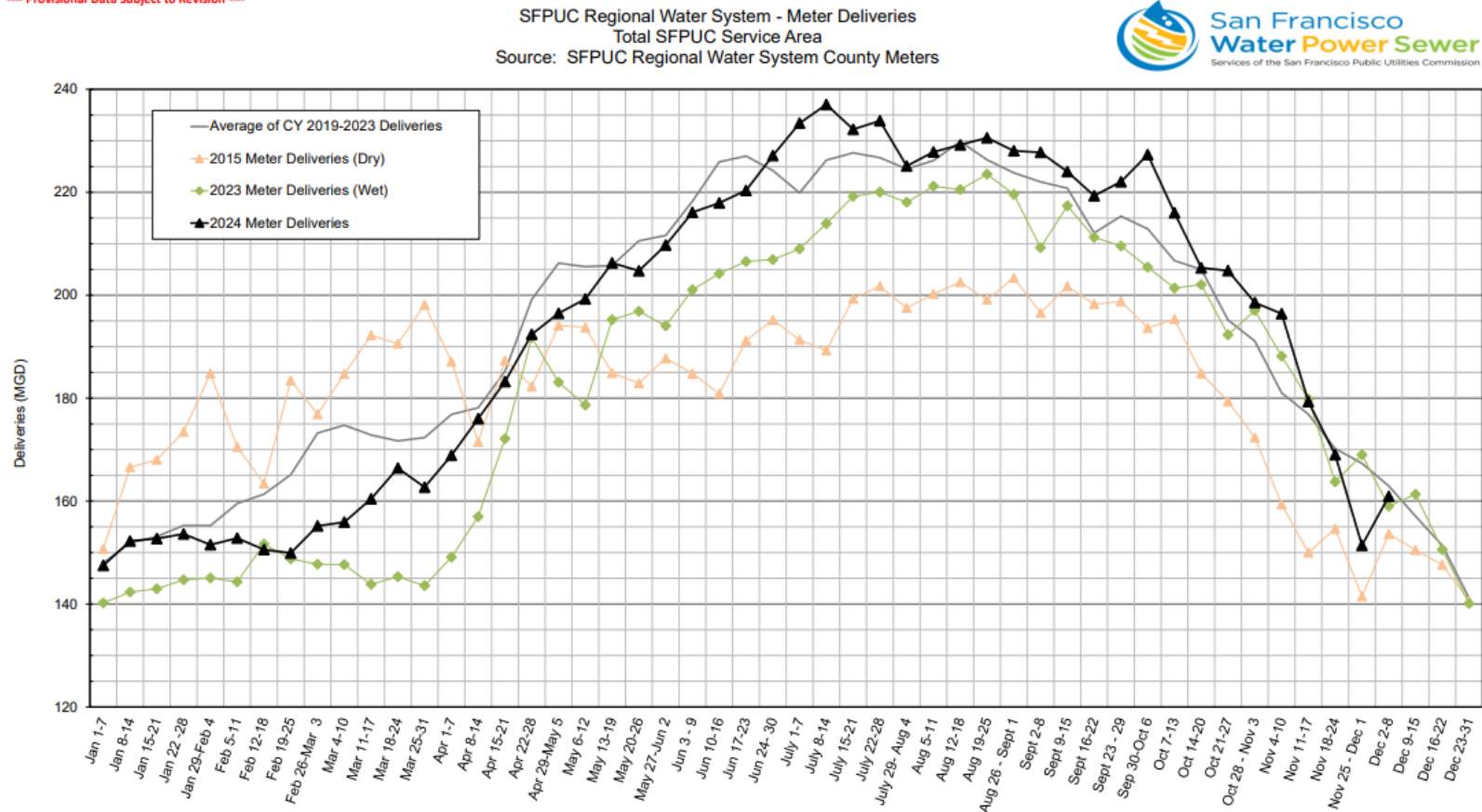
³ Local storage is the date's 8AM storage value taken from USGS data

⁴ Hetch Hetchy maximum storage is with drum gates activated. Cherry and Eleanor maximum storage is with flashboards in. All maximum storages taken from rating curve.

⁵ The ratio of median storage for this day over maximum storage capacity. Median storage for this day is based on historical storage data from years 1991 - 2020

Total Deliveries – Total Service Area

--- Provisional Data Subject to Revision ---

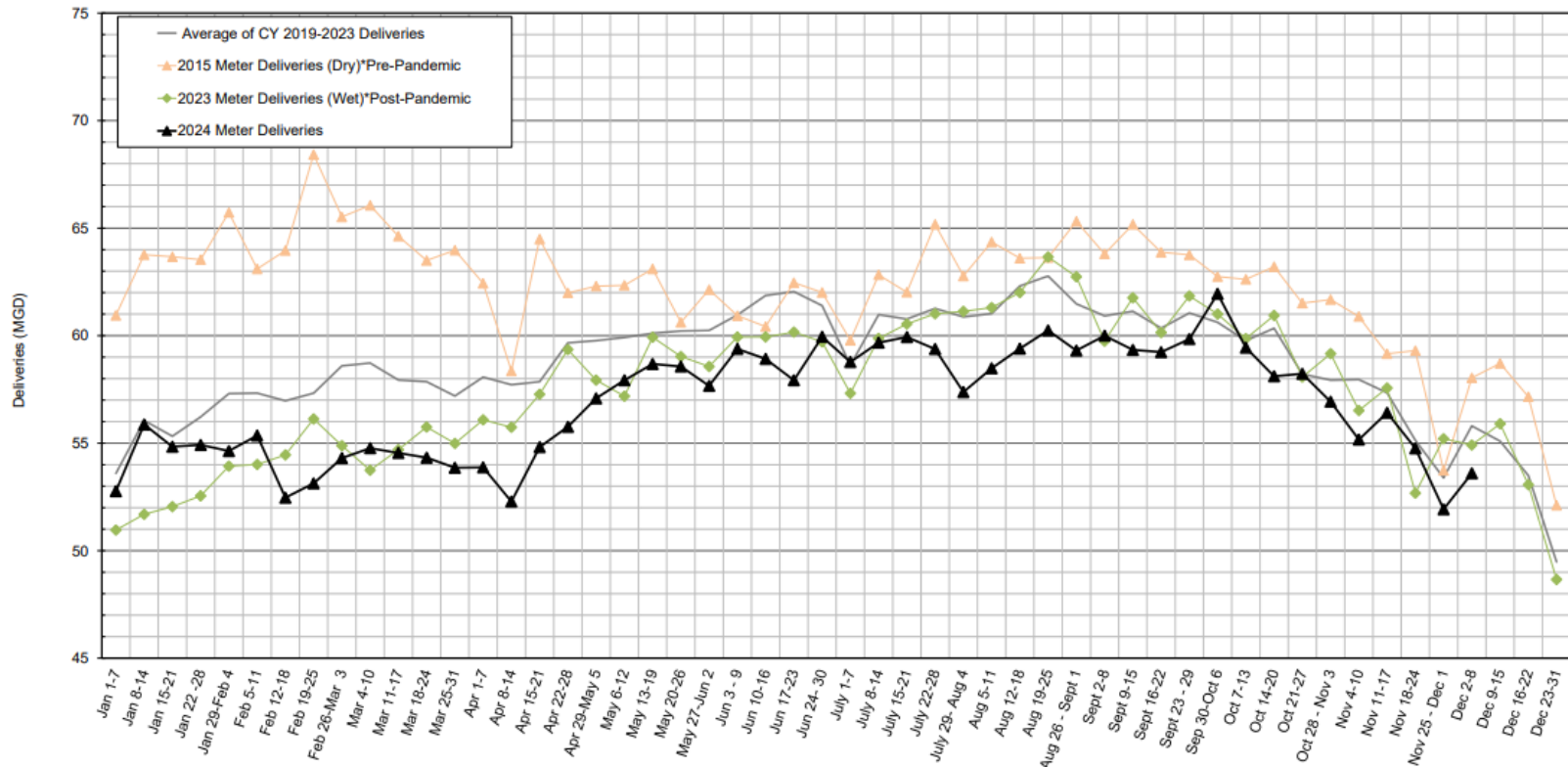


We provide water to 2.7 million residents in the greater Bay Area. Our total service area includes customers in the City and County of San Francisco; as well as Wholesale customers in the Peninsula, South Bay, and East Bay Communities.

Total Deliveries – SF Customers

--- Provisional Data Subject to Revision ---

SFPUC Regional Water System - Meter Deliveries
San Francisco Customers
Source: SFPUC Regional Water System County Meters

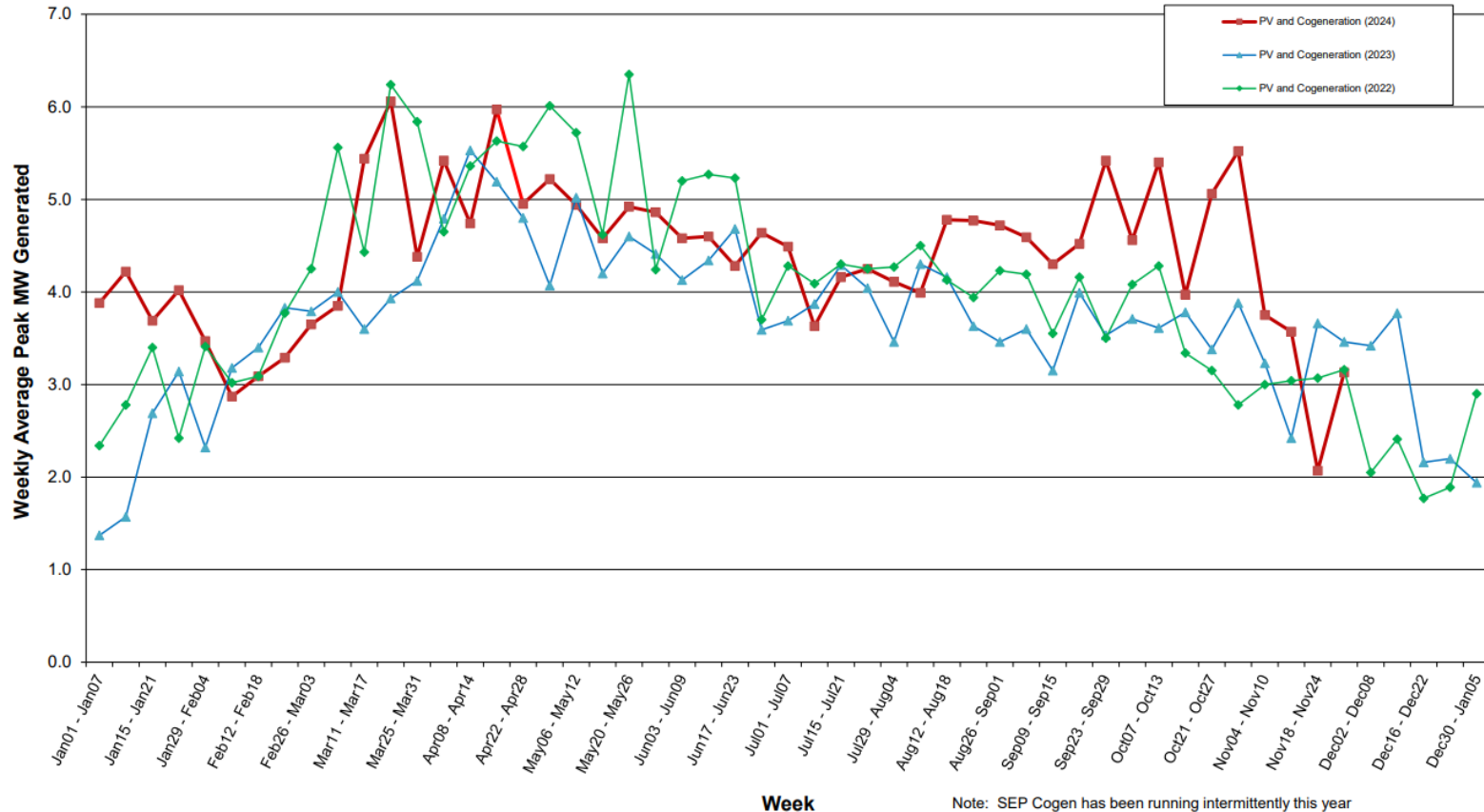


We provide water to 2.7 million residents in the greater Bay Area. "San Francisco Customers" include water metered at the San Francisco County Line, which serves customers in the City and County of San Francisco.

Photovoltaic Gen & Metered Cogeneration

PV Generation and Metered Cogeneration

06 Dec 2024



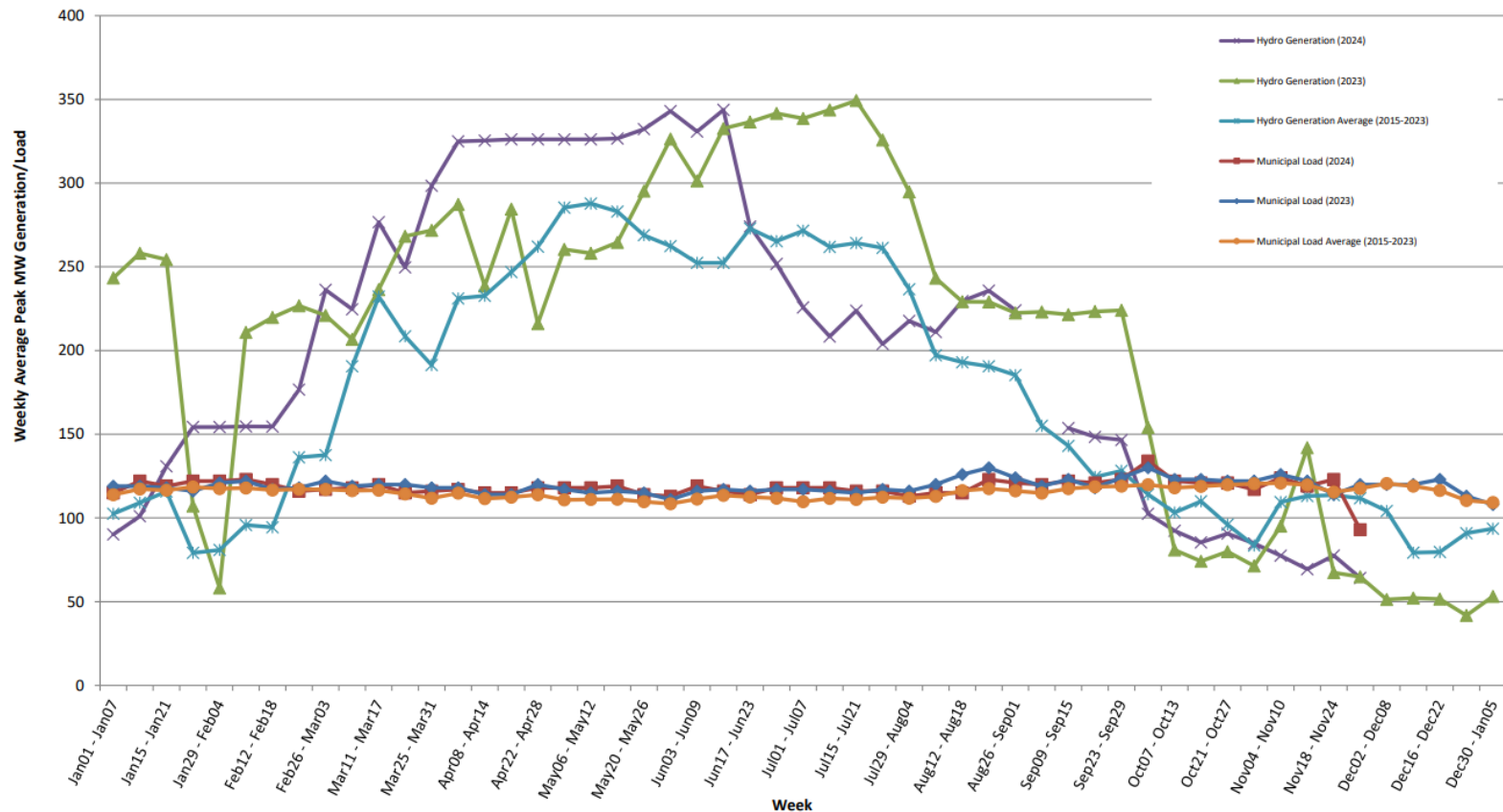
Solar Photovoltaic (PV) technology uses semiconductors to convert solar radiation into DC Electricity. Cogeneration is the process of capturing and using the by-products of electrical generation or wastewater treatment facilities. In the case of wastewater treatment facilities, cogeneration systems use the anaerobic digester gas to generate electricity. Rather than directly releasing these by-products back into the environment, they can be used to generate electricity for the facility.

MW=megawatts

Hydro Generation & Municipal Load

Hydro Generation and Municipal Load

06 Dec 2024



Municipal load is the amount of energy needed to power our municipal facilities. On average that is about 120 MW. These facilities include the San Francisco Municipal Railway, SF General Hospital, SF Unified School District, SFO, SFPD, SFFD, the Port of SF, and the SFPUC's regional and local water and wastewater systems. Hydropower is produced at Kirkwood, Moccasin, and Holm powerhouses.