



# Community Benefits

## Annual Report Fiscal Year 2024-2025





# Introduction



Equity Outreach Expert, Jim Chien, promoting the SFPUC's Customer Assistance Program (CAP) at the Southeast Community Center's SF District 10 Health Fest event



SFPUC College Hill Learning Garden educator, Hannah Gordon, teaching 3rd grade students about healthy watersheds



Left to right: Mary Chou, Public Art Program Director, San Francisco Arts Commission, artist Norie Sato, and Blair Randall, Arts and Education Program Manager, San Francisco Public Utilities Commission, standing in front of the artwork "Whorl Whirl: Our Circular Nature"

## Our Mission as a Utility Agency

At the San Francisco Public Utilities Commission (SFPUC), our mission is to provide our customers with high quality, efficient and reliable water, power, and sewer services in a manner that is inclusive of environmental and community interests, and that sustains the resources entrusted to our care. The San Francisco Public Utilities Commission provides retail drinking water & wastewater services to the City and County of San Francisco, wholesale water to three Bay Area counties, green hydroelectric, and solar power to Hetch Hetchy electricity customers, and power to the residents & businesses of San Francisco through the CleanPowerSF program.

## Community Benefits Connection

The SFPUC seeks to be a good neighbor to everyone who lives within our service territory. We are proud to be the first utility agency in the nation to adopt Environmental Justice (2009) and Community Benefits (2011) policies. These policies created our Community Benefits Division which advances our agency's mission to be inclusive

of environmental and community interests while delivering our essential utility services. In 2020, our agency adopted its Racial Justice Resolution which condemns systemic racism and advocates for racial justice for Black, Indigenous, and People of Color (BIPOC) staff and communities. These policies are a guiding framework to meet our environmental and social equity goals, promote sustainability, and provide meaningful long-lasting community benefits. Our programs range across internships and career exposure in the government and utilities industries, environmental education and free garden fieldtrips, environmental justice and land revitalization, public art, events and services at our Southeast Community Center, and corporate social responsibility in partnership with SFPUC contractors.



# Community Benefits Annual Report Fiscal Year 2024-2025

## Executive Summary

### About This Report

Our Community Benefits Annual Report captures the programs, activities, partnerships, and accomplishments by our team that advance our agency’s mission and guiding policies. This report is aligned with the City and County of San Francisco’s Fiscal Year 2024-2025 which covers July 1, 2024, to June 30, 2025, and highlights the work of our team during this timeframe. This report is one of the many ways our team upholds our values of transparency and accountability to our communities, our partners, and our customers.

### Impact Across Program Areas

#### Workforce

Our Workforce approach exposes youth, young adults, and teachers to SFPUC water, power, and sewer services to empower students to be environmental stewards of our systems and infrastructure and expose them to careers at SFPUC. Through our keystone Project Learning Grant (PLG) program, we partnered with **16 organizations** to serve **731 young adults** to explore real-world environmental challenges such as flooding and renewable energy, while also gaining valuable exposure to careers in the government and utility industries.

Through our partnership with San Francisco Unified School District (SFUSD) and John O’Connell High School (JOCHS), **284 students** learned about SFPUC operations, and **74 freshmen students** attended an overnight field trip to Camp Mather in Tuolumne County to learn about watersheds and San Francisco’s water systems. This year, the SFPUC hosted **7 interns** from JOCHS and **5 interns** from SFUSD to gain career exposure on different water, power, and wastewater subjects.

This year’s Teacher Externship, called Science in the City, was a vibrant collaboration between SFPUC, IgnitEd Education, and Stantec. During the program, **17 teachers** toured key SFPUC facilities and engaged in discussions on environmental justice, climate change, and urban water management, deepening their understanding of the science behind the city’s critical infrastructure.

Our tour program of SFPUC Headquarters offers youth-focused tours that introduces students to the SFPUC’s essential services, including water, power, and sewer systems. This year, we welcomed **32 youth** from Chinatown Community Development Center and CityWorks to our headquarters for student tours.

#### Education at College Hill Learning Garden

The SFPUC’s College Hill Learning Garden (CHLG) offers San Francisco students a chance to learn about environmental stewardship and the importance of water, power and sewer resources entrusted in our care. This year, we provided **113 free field trips** for **2,794 students** and **446 adult volunteers** across **9 lesson topics**: Our Living City, Our Healthy Watersheds, Power in the City, Rain Gardens, Planting for a Healthy Planet, Urban Food City, Our Shared Habitat, Urban Pollinators, and Full Cycle/Zero Waste.

#### Environmental Justice and Land Use

At our agency, Environmental Justice means that people of all races, cultures, and incomes are treated fairly, and no group bears a disproportionately negative impact from our operations. We have developed Equitable Engagement Guidelines which promotes meaningful public engagement in the planning, design, and construction of SFPUC projects.

We are committed to meeting environmental justice standards by lessening the negative environmental impacts from current projects.

We have also partnered with City departments such as San Francisco Environment (SFE) to lead the Racial and Social Equity Assessment of SFE’s Climate Action Plan while incorporating equity metrics.

We are dedicated to providing safe, reliable, and affordable services. We disbursed nearly **\$65,000** to **75 low-income customers** with water and sewer bill debt in Spring 2025, through our debt relief pilot program.

In collaboration with our Wastewater Enterprise, we support their goal to help schools and parks lower the cost of their stormwater bills while promoting the environmental and social benefits of green infrastructure (GI). To date, **21 of 29** awarded Green Infrastructure Grant projects are in Moderate or High Priority Environmental Justice Areas. As of **Fall 2025, 8 out of 29 grant awards – \$10.77M – were awarded to 8 properties** in San Francisco’s District 10 neighborhood - 4 of which are SFUSD schools. Through this effort SFUSD has received a total of 10 green infrastructure grants for schools.

The SFPUC transforms under-utilized public land into vibrant gardens and community spaces that provide educational opportunities about water conservation and pollution prevention. Our team supports Hummingbird Farm, Garden for the Environment, College Hill Learning Garden, and the greenspace at the Southeast Community Center.

#### Art

The City and County of San Francisco requires all City agencies to contribute 2% of all aboveground construction project costs for public art. This year, the SFPUC completed our largest artwork to-date. **Whorl Whirl: Our Circular Nature** (2024) by Norie Sato at the Headworks Facility of the Southeast Treatment Plant is a painted aluminum

and stainless-steel sculpture standing 35 feet tall and 335 feet long. It is the exterior façade of the Southeast Treatment Plant along Evans Ave.

#### Southeast Community Center

The Southeast Community Center (SECC) entered its 3rd year of operation at its new campus and continues to grow as a vital hub for connection, culture, and community resilience. To date, the SECC has hosted over 3,200 events that brought over 106,000 visitors. This year, the SECC hosted **824 events** and **67 building tours** that brought over **26,000 visitors**. These events bring vital services, such as job fairs, citizenship workshops, and wellness activities to our local community. The Resident Partners at SECC are community-based organizations who offer programs and services on-site at the center. This year the 9 Resident Partners served **1,787 individuals** through their programs and 84% are San Francisco District 10 residents (94124,94107, 94134) – which is a 31% increase from the previous year! SECC Resident Partners also hosted **71 events** with over **2,137 attendees** with an emphasis on informational workshops and providing resources.

#### Social Impact Partnerships

Our Social Impact Partnership (SIP) program creates an opportunity for firms who contract with SFPUC to demonstrate their corporate social responsibility by voluntarily contributing financial donations and volunteer hours to nonprofit organizations and public education providers in the communities we operate in. This year, **34** SIP firms **contributed over \$4.8M** to 89 beneficiaries that run programs focused on job exposure and internships, environment and community health, education, small business support, and housing and economic support across **8 counties** in our service area.



# Our Program Areas

Each of our Program Areas are committed to implementing and achieving the outcomes and goals stated in our Community Benefits and Environmental Justice Policies.



## Workforce

Preparing community for careers in government and the utility industry



## Art

Connecting public art to people and place



## Education

Environmental education in water, power, and sewer concepts



## Southeast Community Center

A local resource hub shaped by a historical legacy and vision



## Environmental Justice and Land Use

Centering culture and justice while stewarding our natural resources



## Social Impact Partnerships

Collaboration across public, private, and nonprofit sectors to transform communities throughout our service area



# Community Benefits Engagement and Impact in FY2024-2025

---

## Measurable Results and Accountability through Data:

These numbers demonstrate our department’s commitment to delivering equitable programs, building partnerships, and creating meaningful engagement.

Delivered  
**110**  
Programs

Collaborated with  
**202**  
Partners

Hosted  
**3,131**  
Events

Connected through  
**295,899**  
community Interactions





## Workforce

Building a Pipeline of Utility Careers



CityWorks interns visit 525 Golden Gate

Our Workforce approach starts by exposing youth, young adults, and teachers to SFPUC water, power, and sewer services to empower students to be environmental stewards of our systems and infrastructure and expose them to careers at SFPUC.

### Project Learning Grants

Through our Project Learning Partnership Grant (PLG) program, we partner with local youth-serving organizations to deliver hands-on project-based learning experiences that focus on water, power, and sewer concepts with a focus on climate resilience. This isn't your typical classroom, in this program young people explore real-world environmental challenges such as flooding and renewable energy, while also gaining valuable exposure to career pathways in the government and utilities industries. They emerge with podcasts, short films, public art, emergency kits, and a strong sense of civic pride. The projects they create are deeply connected to the neighborhoods they live in



John O'Connell High School students visiting Hetch Hetchy reservoir

and infused with a growing awareness of the professional opportunities that await them at the SFPUC. This year, we partnered with **16 organizations to serve 731 young people** (462 youth and 269 transitional aged youth; 18yrs – 24yrs).

### Grantee Spotlight

#### Bay Area Video Coalition (BAVC)

At Bay Area Video Coalition (BAVC), students turn the lens on environmental justice. Guided by project-based learning activities focused on research, narrative development, and hands-on production, youth participants used film to “Make an Impact” on issues that matter to their communities. Each student group selected an environmental justice topic and brought it to life through a short film. Their themes ranged from water and wastewater to power, pollution, and



Chinatown Community Development Center student presentations

environmental emergency response. The result was a bold collection of student-produced media that moved people to act.

#### Intern projects include:

- Fictional psychological thriller/comedy about harmful algae in Lake Merced
- Documentary exploring the effects of pesticide use in agriculture
- Film investigating cutting-edge wildfire response technologies
- Playful, game-inspired video promoting eco-conscious choices across San Francisco

All students also visited the College Hill Learning Garden, where they explored how nature, food systems, and urban water intersect. One group even made a site visit to the Southeast Wastewater Treatment Plant, where they captured videos and learned about the scale and significance of SFPUC's infrastructure in action. These visits provided students with authentic visual content and a deeper sense of connection to their city.

### Community Youth Center

This year, Community Youth Center (CYC) participants took on some of the most urgent climate issues facing San Francisco with a spirit of inquiry, creativity, and action. Grounded in project-based learning, their work began with a deep dive



Community Youth Center students

into key environmental topics including climate change, flooding, San Francisco's groundwater and sewer systems, aquifer recharge, and the Hetch Hetchy water supply. CYC staff used activities from the PLG curriculum to build a shared foundation of knowledge, equipping youth with the tools to ask big questions and pursue solutions with confidence.

Inspired by their learning, this year's cohort focused their efforts on flooding and flood preparedness. Youth collaborated in small teams to create a series of public education projects, including two short PSA videos, a community newsletter, and a flood emergency kit complete with an easy-to-follow instruction card. Through presentations at school workshops, the CYC Springtime Festival in Chinatown, the AAPI Youth Summit, and other public events, youth participants brought their knowledge into the community, educating peers and neighbors.

CYC youth also used this experience to explore the role they can play in building climate resilience not just as students, but as community leaders and future professionals. The result is a compelling set of youth-led projects that bridge science, storytelling, and civic engagement.



Sunset Youth Services

This year, Sunset Youth Services brought heart, creativity, and purpose to their PLG work through the Tap In Campaign which took a modern, youth-centered approach to education through social media. After researching common fears among their peers about water safety, participants created a series of short, engaging posts and videos to highlight the reliability and cleanliness of San Francisco’s tap water. Their goal was to demystify drinking water and build trust in public infrastructure through youth voice and creative communication.

Through podcasts, music, video, and social media campaigns, participants also explored environmental issues like water and energy systems with curiosity and confidence. Their projects not only showcase powerful artistic expression, but also reflect a deeper understanding of equity, infrastructure, and the kinds of career pathways that build more just and sustainable futures. As one youth participant shared,

“At first, I thought all jobs in the environment were boring, but after talking to a recruiter there, I was like, ‘Wow, I could really do this! A job where I can make a difference, be creative, and have a good life.’”

The result is a powerful body of youth-led work that informs, inspires, and invites action from those just discovering their passion to those ready to lead.



John O'Connell High School students roasting marshmallows at Camp Mather

John O'Connell High School Partnership

Through our partnership with John O'Connell High School (JOCHS), the SFPUC provides teachers with the resources to design curriculum about our water, power, and sewer operations. This year, 284 students learned about utility careers and environmental stewardship through this partnership.

Camp Mather

This year’s trip to Camp Mather in Tuolumne County was more than just an overnight field trip, it was a transformative experience for the 74 first-year students from JOCHS. Organized in collaboration with SFPUC Watershed Keepers, Yosemite National Park Rangers, and San Francisco Recreation and Parks Department Staff, the trip offered students a unique opportunity to connect with nature and learn about San Francisco’s water systems.

The theme of transformation resonated throughout the experience. Chaperones and staff observed students stepping out of their comfort zones, embracing new challenges, and discovering strengths they hadn’t recognized before. As one staff member noted, “so many of our kids broke through their comfort zones in various situations. Witnessing them surprise themselves was pure joy.”

From exploring the Hetch Hetchy Reservoir to engaging in environmental education activities, students gained a deeper appreciation for the



Students visiting Camp Mather and the Hetch Hetchy reservoir

natural world and the importance of water conservation. This trip not only expanded their knowledge but also inspired them to consider future careers in environmental sciences and public service. The Camp Mather experience exemplifies the power of immersive learning and its potential to ignite passion and purpose in young minds.

Internships

As part of our ongoing commitment to education and career exploration, the SFPUC proudly hosts student interns from John O'Connell High School’s Public Service Pathway. This school program integrates water, power, and sewer concepts into classroom instruction, with weekly field experiences that bring learning to life. Each Wednesday during the fall and spring semesters, SFPUC teams welcomed 7 interns to departments such as Information Technology Services, Human Resources Services, as well as our very own Community Benefits Environmental Justice and College Hill Learning Garden teams. Each student was placed with a team whose work directly supported their Capstone research project, ensuring that their time at the agency was meaningful and relevant. Students receive class credit through SFUSD’s College and Career Readiness program, reinforcing the connection between real-world experience and academic progress.





*PLG students participating in a learning activity*

This Summer, the SFPUC also hosted 5 interns from other SFUSD schools. The Interns participated in staff meetings, conducted research, and engaged in one-on-one conversations with SFPUC professionals. Interns also supported the Teacher Externship program, learning about the SFPUC’s operations alongside their teachers.

### Workforce Events

#### Teacher Externship

This year’s Teacher Externship, called Science in the City, was a vibrant collaboration between SFPUC, IgnitEd Education, and Stantec. This immersive week-long program invited educators to explore the inner workings of San Francisco’s



*Teacher Externship participants at the Southeast Community Center*

water, power, and sewer systems and to create unique curricula for their students based on what they have learned.

During the program, 17 teachers toured key SFPUC facilities, including the Southeast Community Center and treatment plants, Lake Merced, and India Basin Park. They engaged in discussions on environmental justice, climate change, and urban water management, deepening their understanding of the science behind the city’s critical infrastructure. These real-world insights equip educators to bring relevant, engaging content back to their classrooms and inspire students toward careers in environmental science and public utilities.



*Teacher Externship participants at the Southeast Community Center*



*Tour of the Sunset Reservoir Solar Array*

### Tours of SFPUC Headquarters

This year, the SFPUC reimagined its tours at 525 Golden Gate with a new youth-focused offering that brings together education, career awareness, and community engagement. The SFPUC Headquarters Student Tour Program is more than a building tour. It is an invitation for young people to explore how the city works and discover where they might see themselves in its future.

The program introduces students to the SFPUC’s essential services, including water, power, and sewer systems. It also highlights the values that guide our work, such as sustainability, equity, and public service. Through in-person interactions with SFPUC staff and subject matter experts, students are exposed to a wide range of civic and technical careers. They also learn how public infrastructure impacts daily life across San Francisco.



*PLG students participating in a learning activity*

Recently, we welcomed 20 youth from Chinatown Community Development Center and 12 youth from CityWorks to our headquarters for student tours. During their visits, they engaged directly with staff on topics including green infrastructure, our combined sewer system, and the City’s Language Access Ordinance and how it ensures that all residents can understand and participate in government services. By connecting these tours with our broader education and workforce programs, the SFPUC is helping to build a generation of young people who are informed, inspired, and ready to lead.





# Education: College Hill Learning Garden

Fostering a Relationship With Our Environment



Students learning about healthy watersheds through an interactive activity



Students exploring the greenhouse



Students learning about permeable surfaces



Students observe edible gardens

The SFPUC's College Hill Learning Garden (CHLG) offers San Francisco students a chance to learn about stewardship and build a relationship to the resources entrusted to our care. Our garden educators provide free K-12th grade eco-literacy field trips that center the Next Generation Science Standards, California Common Core, and the San Francisco Public Utilities [Big Ideas](#) curriculum. This year, we provided **113 free field trips for 2,794 students and 446 adult volunteers across 9 lesson topics:** Our Living City, Our Healthy Watersheds, Power in the City, Rain Gardens, Planting for a Healthy Planet, Urban Food City, Our Shared Habitat, Urban Pollinators, and Full Cycle/Zero Waste. In addition to the lesson themes and field trips, the College Hill team also provides Green Infrastructure tours for Project Learning Grant participants from our Workforce program, universities, community-based organizations, and non-profits.

## Lesson Highlights

### Our Healthy Watersheds

Students are invited to learn about our city's water systems, rainwater, and watersheds through exploration, modeling, and stewardship. Students learn what San Francisco watershed they live in and how it is connected to the larger Hetch Hetchy Regional Water System. Students experiment with water recycling features on site, use recycled water and rainwater to irrigate growing plants in the garden, and build a California watershed model to simulate rainfall and a storm.

### Power in the City

Students learn about renewable and non-renewable energy use in San Francisco and California while exploring urban power generation. Students learn about different energy forms, examine renewable energy sources on site, build solar circuits, construct a hydro-electric model, and/or make origami windmills. Students discuss responsible options for using power sustainably at school and at home.

### Urban Food Systems

Students discover how to grow healthy, sustainable food in the city by helping us care for our edible gardens. Students taste seasonal foods and food map the journey of their food from farm to table and after. Students explore the life cycle of our food from gardening to composting with fungus, bacteria, and invertebrates. They learn about the resources and stewardship that are required to grow and sustain regenerative food systems, including water, labor, and other inputs.

### Our Shared Habitat

Students explore the various habitats on site and learn how to help create a biodiverse and interdependent city through stewardship. Students learn what is needed in a healthy habitat and which wild animals of San Francisco and the Bay Area we share our city with. Students build mini habitats with natural materials in the garden and imagine the wildlife that could 'move into' their habitat. Students connect the dots between resource stewardship, biodiverse habitats, and healthy humans.



Students help harvest and chop garden veggies to make a seasonal snack during an Urban Food System field trip



SFUSD Intern works on painting his individual project, an educational sign about water re-use in the garden



Teacher Highlights

Valerie Ziegler, Abraham Lincoln High School Green Academy Teacher:

“Since 2017 the Abraham Lincoln High School Green Academy has been partnered with the College Hill Learning Garden. The partnership began with an initial field trip in 2017 and has grown to be six field trips a year, supporting college and career activities such as mock interviews and serving as mentors at capstone presentations. The College Hill Garden Educators design curriculum that directly supports the learning of Green Academy students. Tenth graders engage in lessons about native plants, pollinators and food systems. At this year’s San Francisco citywide Earth Day festival several of the students hosted booths that were inspired by what they learned at College Hill. In eleventh grade, students in Green Academy take a green engineering course. Their lessons focus on topics such as power in the city, green infrastructure and rain gardens. Students use this curriculum to inspire the 3D green building models featured in their capstone projects. The Green Academy is a Career Technical Education (CTE) program in the Energy, Environment & Utilities sector. The success of the program relies on partnerships such as with College Hill and the SFPUC to provide hands-on learning and college and career readiness opportunities.”



SFUSD intern poses with his completed educational sign about water reuse and recycling at the garden



Students work together to build a model of the SF Bay watershed and observe as it rains in the watershed during an Our Healthy Watersheds field trip

Helen Serafino, 2nd grade Educator at Longfellow Elementary School:

“College Hill Learning Garden is one of the best field trips in San Francisco. I started bringing my 2nd grade students to this beautiful garden in 2022. Metzali and Hannah are engaging garden teachers. The staff gives hands-on education for kids to explore nature, get their hands dirty with gardening, and learn about the City’s environment. I learned so much from them as an adult learner, too. My 2nd grade San Franciscans are lucky to have this space to learn about the city they live in.”



SFUSD High School Interns work together to plant a Pineapple Guava tree in the orchard



SFUSD intern stewarding the front sidewalk garden

Internships

The College Hill Learning Garden is continuously transformed and improved by the staff, the interns who rotate seasonally, and the many students who help care for the garden space. With the help of summer interns, the front sidewalk garden transformed into a corridor for pollinators – filled with freshly planted Native California plants. Throughout their internship, each intern chose a project to focus their energy on, this year they created educational signage about the water re-use and recycling on site, painted plant name identification signs, built a bench for students to use, and made a planting and care plan to help steward the pond habitat.



SFUSD Intern works on his individual project of building a bench for the garden





# Environmental Justice and Land Use

Justice for People and Land

At our agency, Environmental Justice means that people of all races, cultures, and incomes are treated fairly, and no group bears a disproportionately negative impact from our operations. To meet this goal, our team advances and integrates environmental justice (EJ) into SFPUC plans, programs, and operations.



Ellyn Shea oversees students' installation of new irrigation during the Garden for the Environment Sustainable Series



Flower Crown Making in the willow for "Mama Earth Day 2025"



Rickie Cleere, Environmental Justice and Land Use Analyst, at an Ogden Terrace Community Garden site visit to view retaining walls

## Equitable Engagement Guidelines

Our team leads the SFPUC's Equitable Engagement Guidelines which promote meaningful public engagement in the planning, design, and construction of SFPUC projects. This year, we collaborated with Communications to pilot the equitable engagement principles into select projects.

## Community Engagement

Our team is committed to meeting the standards in the [SFPUC BDFP Environmental Justice Report](#). This report shares strategies that lessen the negative environmental impacts. This year, we increased transparency about PM2.5 emissions forecasts and engaged with Bayview Hunters Point communities about possible offsets to negative air quality impacts.

## Debt Relief

We believe that access to water is a human right, and we are dedicated to providing safe, reliable, and affordable services. We disbursed nearly **\$65,000** to **75 low-income customers** with water and sewer bill debt in Spring 2025, through our debt relief pilot program.



Wetland Restoration with the Youth Watershed Stewards

## Climate Action and Equity

The San Francisco Environment (SFE) Climate Action Plan provides assistance to vulnerable populations disproportionately burdened by climate change and ensures climate action benefits are distributed fairly. Our team led the Racial and Social Equity Assessment of the plan and incorporated equity metrics. Through our internal partnership with SFPUC's Water Resources Planning Division and the Power Enterprise, we ensured that the water supply and clean energy portions of the plan integrate climate justice strategies.



Completed Green Infrastructure Grant project at Crocker Amazon Park



Completed Green Infrastructure Grant project at Bessie Carmichael Elementary School

## Green Infrastructure

We collaborate with our Wastewater Enterprise to advance environmental justice. We aim to help schools and parks lower the cost of their stormwater bills while promoting the environmental and social benefits of green infrastructure. To date, 21 of 29 awarded Green Infrastructure Grant projects are in Moderate or High Priority Environmental Justice Areas. As of Fall 2025, 8 out of 29 grant awards – \$10.77M – were awarded to 8 properties in San Francisco's District 10 neighborhood - 4 of which are SFUSD schools. Through this effort SFUSD has received a total of 10 green infrastructure grants for schools.

A complete map of projects can be found on the SFPUC [Green Infrastructure Grant Program Map](#).



Public Land

The SFPUC transforms its under-utilized public land into vibrant community gardens that provide educational opportunities about water conservation and pollution prevention. This year, we improved multiple SFPUC sites. The Southeast Community Center (SECC) Interim Outdoor Flexible-Use Space will span 15,000 square feet and serve as a community-centered area designed to support a wide range of outdoor activities, including health and wellness programs, environmental education, and community gatherings. This space will further SECC’s mission as a vital hub for connection, culture, and community resilience. Features of the space will include a flexible outdoor space, canopy shade structures, fitness equipment, outdoor furniture, planter boxes, string lighting, and community art. The Garden for the Environment (GFE) project will replace the greenhouse and retaining wall which have fallen into disrepair. The new greenhouse, tool shed, and retaining wall will support GFE’s programming to provide public education to SFPUC ratepayers about water conservation and pollution prevention.

Garden for the Environment

A nationally acclaimed half-acre education and demonstration garden in the Inner Sunset neighborhood of San Francisco. The garden, founded in 1990 and cultivated on land owned by the SFPUC, supports small-scale urban ecological food production, organic gardening, composting, and low water-use landscaping. Environmental Justice (EJ) Impact:

- 31% of adult workshop participants from EJ communities\*
- 27% of youth engaged from EJ communities\*
- 28% of volunteers from EJ communities
- 53% of Get Up! participants identify as low income



Garden for the Environment beekeeping students participate in a hive viewing

“The most valuable nugget I gained from Get Up! was just the knowledge that I absolutely can be part of the solution, and that I now have skills and knowledge to pass on.”

— Garden for the Environment program participant

Garden Highlights

- 74 workshops
- 800 workshop attendees
- 36 field trips
- 837 students
- 1,379 garden tours
- 2,465 educational hours
- 7,300 visits
- 88 volunteer sessions
- 3,586 volunteer hours



Volunteers harvest material and create bouquets at Garden for the Environment

Hummingbird Farm:

A community farm with the goal of supporting the health and wellness of residents. The farm aims to teach water conservation and sustainable food practices to communities in the Excelsior neighborhood and the Southeast while training community leaders to promote growing and eating healthy food.

- 92 community garden workdays
- 928 volunteer sign ins
- 25 youth farm tours
- 15 apprentices and interns hosted through our Project Learning Grant Program
- 31 healthy food and medicinal plant workshops
- 6 community farm tours
- 17 cultural celebrations
- 3,003 program participants
- 1,524 native plants restored
- 303 pounds of food produced



Plant Medicine Making Workshop at Mama Earth Day 2025



Will Logsdon, SFPUC Senior Watershed Planner, at the completed Green Infrastructure Grant Program Project at Everett Middle School

Spotlight on Equitable Impact

“Working with the EJ team is crucial to scaling up green infrastructure where it is needed most. Wastewater regularly consults with the EJ team to ensure our green infrastructure programs and outreach strategies align with the City’s EJ Framework and SFPUC’s EJ Policy. Our ongoing efforts in the Green Infrastructure Grant Program to reduce barriers to entry and target outreach appear to be contributing to higher numbers of applications and awards from EJ communities.”

—Will Logsdon, Senior Watershed Planner, Watershed Planning Division, Wastewater Enterprise

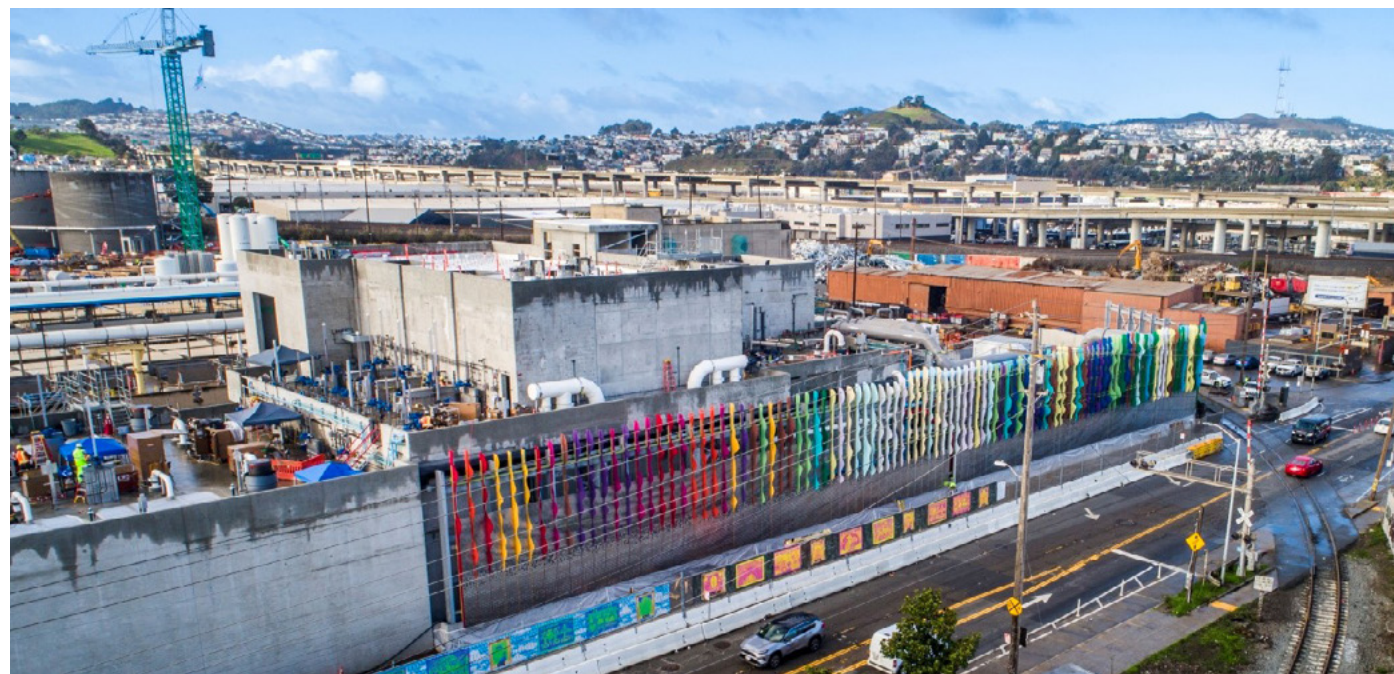
\*An EJ community is defined as a neighborhood, often low-income or with a high population of people of color, that experiences a disproportionate amount of environmental burdens and associated negative health and socioeconomic impacts.





Art

Connecting Public Art to People and Place



The artwork *Whorl Whirl: Our Circular Nature* by Norie Sato at the Headworks Facility of the Southeast Treatment Plant, commissioned by the SFPUC and the SF Arts Commission



The artwork *Whorl Whirl: Our Circular Nature* by Norie Sato evokes the SFPUC's environmental mission through visual references to a whirlpool

## Public Art For Critical Infrastructure

### A new artwork for the Headworks Facility at the Southeast Treatment Plant

The SFPUC's improvements at the Southeast Treatment Plant go beyond critical infrastructure – our approach elevates public art as well. Through an innovative partnership with the San Francisco Arts Commission the SFPUC is using the power of art to share our environmental mission through public art. Recognizing the important role of art, the City and County of San Francisco passed the 2% for the Arts Ordinance in 1969 requiring all City agencies – including the SFPUC – to set aside 2% of all aboveground construction project costs to support public art. The SFPUC is proud to partner with the SF Arts Commission, artists, and community members to create transformative artworks which evoke our environmental mission, connect people to place, and benefit the communities we serve.

This year, the SFPUC completed our largest artwork to date. *Whorl Whirl: Our Circular Nature* (2024) by Norie Sato at the Headworks Facility of the Southeast Treatment Plant is a painted aluminum and stainless-steel sculpture standing 35 feet tall and 335 feet long. The artist was commissioned to



create this artwork in 2016 and it was completed in 2024 demonstrating the time, commitment, and detail it takes to complete capital construction projects of this size.

The Headworks Facility is the first public infrastructure project in the City to receive the Envision Gold award, a national award that celebrates sustainability excellence in civil infrastructure projects, designated by the Institute for Sustainable Infrastructure.

*Whorl Whirl: Our Circular Nature* is meant to “evoke vortices created by the Coriolis effect and the complex processes of water treatment that takes place at the Plant” writes the artist. “My concerns as an artist are involved with connections, often between nature and technology.” This artwork evokes the environmental mission of the SFPUC, and illustrates our approach to connect public art to people and place.





# Southeast Community Center

A Cultural Legacy



Building on a strong foundation of success in its first two years, the Southeast Community Center (SECC) continued to grow as a vital hub for connection, culture, and community resilience in its third year of operation at its new campus. With expanded programming, deeper community partnerships, and an unwavering commitment to the local community, the SECC further solidified its role as a trusted space for collaboration, learning, and celebration.

This year, SECC focused on increasing access to opportunities that empower residents by supporting efforts that promote economic mobility, family stability, and community building. From hiring events, job fairs, and workforce development workshops to citizenship assistance, and digital equity initiatives, SECC created pathways for individuals and families to access tools and resources critical to building a secure future.

Partnerships remained central to SECC's approach. By collaborating with 18 community-based groups and organizations, SECC co-created programs that reflects the voice and values of the neighborhoods it serves.

Throughout the year, SECC also prioritized celebratory and wellness-focused events that brought residents together in joy and solidarity. To date, the SECC has hosted over 3,200 events that brought over 106,000 visitors. This year, the center hosted **824 events and 67 building tours, welcomed over 26,000 visitors.** Our signature D10 Health Fest and the first Art & Soul Festival welcomed more than 800 attendees and highlighted the rich cultural traditions of District 10 communities, including Bayview-Hunters Point, Visitacion Valley, and Potrero Hill residents.

## Spotlight on Leadership: Southeast Community Facility Commission

The Southeast Community Facility Commission (SEFC) is a seven-member, mayoral-appointed body that advises the San Francisco Public Utilities Commission (SFPUC) on strategic planning, financial oversight, capital improvement projects, and programming related to the Southeast Community Center (SECC). Commissioners have also played a key role in shaping the programs at

the SECC ensuring that offerings reflect the values, priorities, and lived experiences of local residents. This year, the Commission has engaged in a wide range of initiatives that advance community health, environmental justice, air quality, public transit, and equitable access to services in Southeast San Francisco neighborhoods. In an effort to strengthen public engagement, the Commission adopted a new evening meeting schedule designed to provide more consistent opportunities for community input.

This year, the Commission proudly welcomed Commissioner Kristin Windley, whose deep commitment to the Southeast community brings valuable insight and perspective.

The Commission also celebrated a leadership milestone with the election of Commissioner

Damien Posey as Chair. Now in his fourth year of service, Commissioner Posey has been an advocate for grassroots leadership, equity, and youth empowerment. A lifelong Bayview resident and executive director of Us4Us, Damien brings unmatched credibility and commitment to the Commission's work. His leadership is grounded in lived experience and years of on-the-ground community engagement.

Known affectionately as "Uncle Damien," his mentorship and advocacy for opportunity and justice have inspired a new generation of civic-minded youth and leaders. As Chair, he continues to elevate the Commission's role as a formidable, community-rooted voice for Southeast San Francisco.

## Southeast Community Facility Commissioners



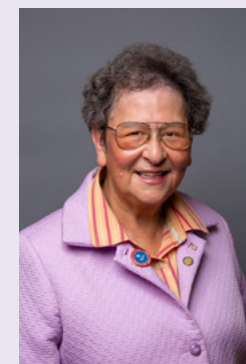
Damien Posey  
*Chair*



Dr. Gina Fromer  
*Commissioner*



Karen A. Chung  
*Commissioner*



Marlene Tran  
*Commissioner*



Chika Mezie  
*Commissioner*



Kristin Windley  
*Commissioner*





SECC Commission Chair Damien “Uncle Damien” Posey

### Lifting Up the Community

The SECC strengthened its role in community by deepening partnerships with organizations committed to uplifting Southeast San Francisco. These collaborations allowed us to expand our reach, enhance our programming, and respond more effectively to local needs. With partners like A. Philip Randolph Institute, Office of Community Engagement and Immigrant Affairs, Bayview YMCA, UCSF, and others, SECC brought vital services and joyful experiences to the neighborhoods we serve. Whether through workforce development, immigrant support, health and wellness, or arts and culture, each initiative reflected the collective power of partnership.

#### Job Fairs

In partnership with the A. Philip Randolph Institute (APRI), SECC co-hosted a series of job fairs connecting jobseekers with employers across various industries. Each event welcomed over 100 jobseekers and more than 25 employers, offering resume support, interview prep, and access to living-wage opportunities.



San Francisco Fire Department providing a demo

#### Citizenship Workshop

SECC partnered with the Office of Community Engagement and Immigrant Affairs (OCEIA) to host a high-turnout citizenship workshop. The event provided direct support for residents applying for citizenship or seeking immigration-related assistance, with many participants coming from the Bayview neighborhood.



SECC's Alex Pitcher event space



PODER is an environmental justice organization that empowers Latinx immigrant families, along with Black, Indigenous and other under invested communities of color, to cultivate community rooted solutions



A busy day at SECC!





Community members gather and cozy up for SECC movie night

**Black Wellness Expo**

In celebration of Black History Month, SECC hosted the Black Wellness Expo, an uplifting day focused on cancer awareness and prevention. Guests enjoyed health education, live music, food, fashion, and resources from partners including UCSF, the SF Women’s Cancer Network, and Spheres Bay Area Community Impact.

**Movie Night Series**

SECC launched its Movie Night Series over summer 2024, bringing families together to enjoy films like *Black Panther*, *The Little Mermaid*, and *Coco*. Each event drew over 50 families who enjoyed free popcorn, arts and crafts, and fun under the stars.

**Bayview YMCA “Whatchamacallit” S.T.E.A.M. Event**

SECC partnered with the Bayview YMCA and the San Francisco Unified School District (SFUSD) to



Magic ToothBus is a group of dental advocates who are passionate about children in low income communities obtain access and resources to dental health

host the “Whatchamacallit” event, dedicated to inspiring local youth through hands-on science, technology, engineering, art, and math activities. More than 300 students participated in hands-on S.T.E.A.M. activities that sparked curiosity and celebrated creativity.

**Southeast Art & Soul Fest**

Kicking off festival season in the spring, the first Southeast Art & Soul Fest brought together over 400 community members to celebrate local artists and performers. The event featured live music, art displays, and community vendors.

**12th Annual D10 Health Fest**

Held in the autumn, the 12th Annual District 10 Health Fest welcomed more than 375 attendees. An outdoor roller rink and spirited Double Dutch contest brought old school fun! The event featured fitness activities, free health screenings, wellness services, and local resource booths—all promoting



SECC staff celebrating the D10 Health Fest



Event DJs sharing good music and good vibes



Roller skating rink in action at the D10 Health Fest





SECC Resident Partner organization, Five Keys, utilizing the Double Rock conference room to provide technology education through the Access Program

## Resident Partners

The Resident Partners at SECC are community-based organizations who offer programs and services on-site at the center. This year the 9 Resident Partners served 1,787 individuals through their programs and 84% are San Francisco District 10 residents (94124, 94107, 94134) – which is a 31% increase from the previous year! SECC Resident Partners also hosted 71 events with over 2,137 attendees with an emphasis on informational workshops and providing resources.



**3rd Street Youth Services and Clinic** helps youth ages 12-24 from the Bayview neighborhood make healthy and safe decisions that improve their physical, emotional, and social health, ultimately empowering them to become successful, contributing adults.

**Service Area:** Health and youth development.



**Charity Cultural Services Center** provides free trainings and workforce development programs for youth and adults in areas of construction, culinary, and financial literacy.

**Service Area:** Financial empowerment and workforce skill development.



**Edgewood Family Resource Center** helps support families and communities in the safe care and development of children. The Family Resource Center and the Edgewood Kinship programs host parent support groups for caregivers to discuss concerns and learn valuable information and skills to support them and their child. They also provide basic needs support, educational workshops, and fun family activities.

**Service Area:** Basic needs and family support.



**En2Action** delivers economic development, community outreach, and place-based activation services through programs, event planning, and production to both for-profit and non-profit organizations in the San Francisco Bay Area. En2action primarily serves Black-owned, People of Color businesses and communities, and provides services throughout San Francisco and the Bay Area.

**Service area:** Economic development and entrepreneurship.



**Five Keys Schools and Programs** provides traditionally underserved communities the opportunity to improve their lives through a focus on the Five Keys: education, employment, recovery, family, community.

**Service Area:** High school and GED programs.



**Hungry Kitchens** creates experiential food concepts for everyone. Visit the café inside the Southeast Community Center.

**Service Area:** Community engagement.



**Office of Civic Engagement and Immigrant Affairs's** (OCEIA) Community Ambassadors Program is a community safety and neighborhood engagement program. The Community Ambassadors Program engages, informs, and assists community members at the Southeast Community Center.

**Service Area:** Community engagement.



**Renaissance Entrepreneurship Center** uses the power of entrepreneurship to help people facing systemic barriers to economic mobility achieve financial independence. Renaissance opens pathways to small business through training, one-on-one consulting, access to capital, and networks of support.

**Service Area:** Economic development and entrepreneurship.



**Wu Yee Children's Services** offers quality childcare to San Francisco's diverse communities and families. Wu Yee is San Francisco's largest head start and early head start provider with over 20 sites including the Southeast Community Center.

**Service Area:** Childcare.





## Social Impact Partnerships (SIP)

Shaping Pathways, Creating Possibilities

The Social Impact Partnership (SIP) Program is designed to leverage the agency's contracts to deliver meaningful and measurable benefits to the community. Through the program, private firms that contract with the SFPUC have an opportunity to voluntarily demonstrate their corporate social responsibility through financial or volunteer contributions to nonprofit organizations or public education providers – also known as beneficiaries. This year, 34 firms participated in the SIP program and contributed over \$4.8M to 89 beneficiaries that run programs in the community that are rooted in equity, uplift historically marginalized communities, promote workforce development, and support local organizations.

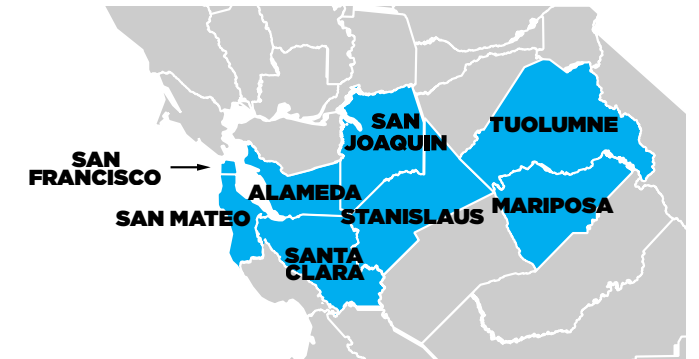
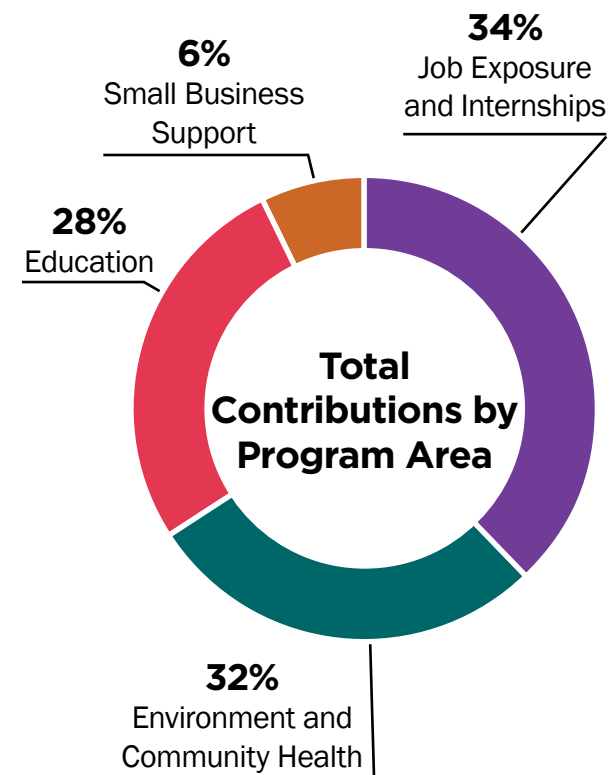


The "Our Neighborhood Hiring Initiative" helps place qualified local workers into union roles and careers in construction



Volunteers gardening at the Slow Sanchez Street Gardens event

## Our FY2024-2025 Impact by the Numbers



Counties	Total Contributions
San Francisco	\$3,641,430
Tuolumne	\$339,420
Alameda	\$322,745
San Mateo	\$89,562
Santa Clara	\$20,321
Stanislaus	\$7,112
Mariposa	\$6,625
San Joaquin	\$625
Total	\$4,427,842

Program Area	Financial Contributions	Volunteer Hours	In-Kind Contributions	Total Contributions
Job Exposure and Internships	\$1,569,445	518	-	\$1,647,145
Environment and Community Health	\$1,220,296	2,046	\$3,596	\$1,530,784
Education	\$1,150,634	1,508	\$847	\$1,377,681
Small Business Support	\$275,000	51	-	\$282,650
Total	\$4,215,374	4,123	\$4,443	\$4,838,260

\*Volunteer hours are valued at \$150/hr.





Hunter's Point Family workforce programs focus on helping low-income job seekers develop the skills to find employment that has a family-sustaining living wage

## Job Training, Internships, and Awareness

### Transforming Futures Through Workforce Development

This year, the firms supported workforce development programs that blend life skills, mentorship, one-on-one coaching, and hands-on training to help youth reclaim their future. Old Skool Café's programming focuses on breaking the cycles of incarceration by equipping formerly systems-involved youth with real-world tools to thrive. Through opportunity, guidance, and care, young people are earning livable wages, and finding their voice and purpose.

**"I really wanted to help my family out, so I've always wanted to work. The adults in my life were either really far away or in prison."**



Old Skool Café's workforce development program Give Youth A Chance

## Small Business Support

### Elevating Entrepreneurs. Expanding Dreams.

SIP contributions support nonprofit business development programs that empower emerging entrepreneurs – especially women and Black, Indigenous, People of Color (BIPOC) leaders – through consultation, business planning support, financial education training, and help with legal regulations.

### Stand Out Stories from Program Participants from the Renaissance Entrepreneurship Center

- The program transformed a participant's career from operating a medical day spa to launching an environmental consulting firm focused on industrial hygiene and human health.
- The program addressed mental wellness and Alzheimer's – through this effort a small business owner created a customizable journal available at Barnes & Noble.

These stories showcase how targeted investment and wraparound services can turn a dream into a thriving enterprise.



EDoT (Economic Development on 3rd) hosted the People's Garden Event filled with live entertainment, dance performances, and lunch



EDoT (Economic Development on 3rd) hosted the People's Garden Event filled with live entertainment, dance performances, and lunch



Public Education

Investing in Educators, Enriching Communities

The program proudly supported the Educator Impact Grants in partnership with the SF Ed Fund. This year, three San Francisco public schools received grants for innovative projects, including a life-changing outdoor camping experience for Black, Indigenous, and People of Color (BIPOC) students and families to connect, reflect, and grow outside the classroom.

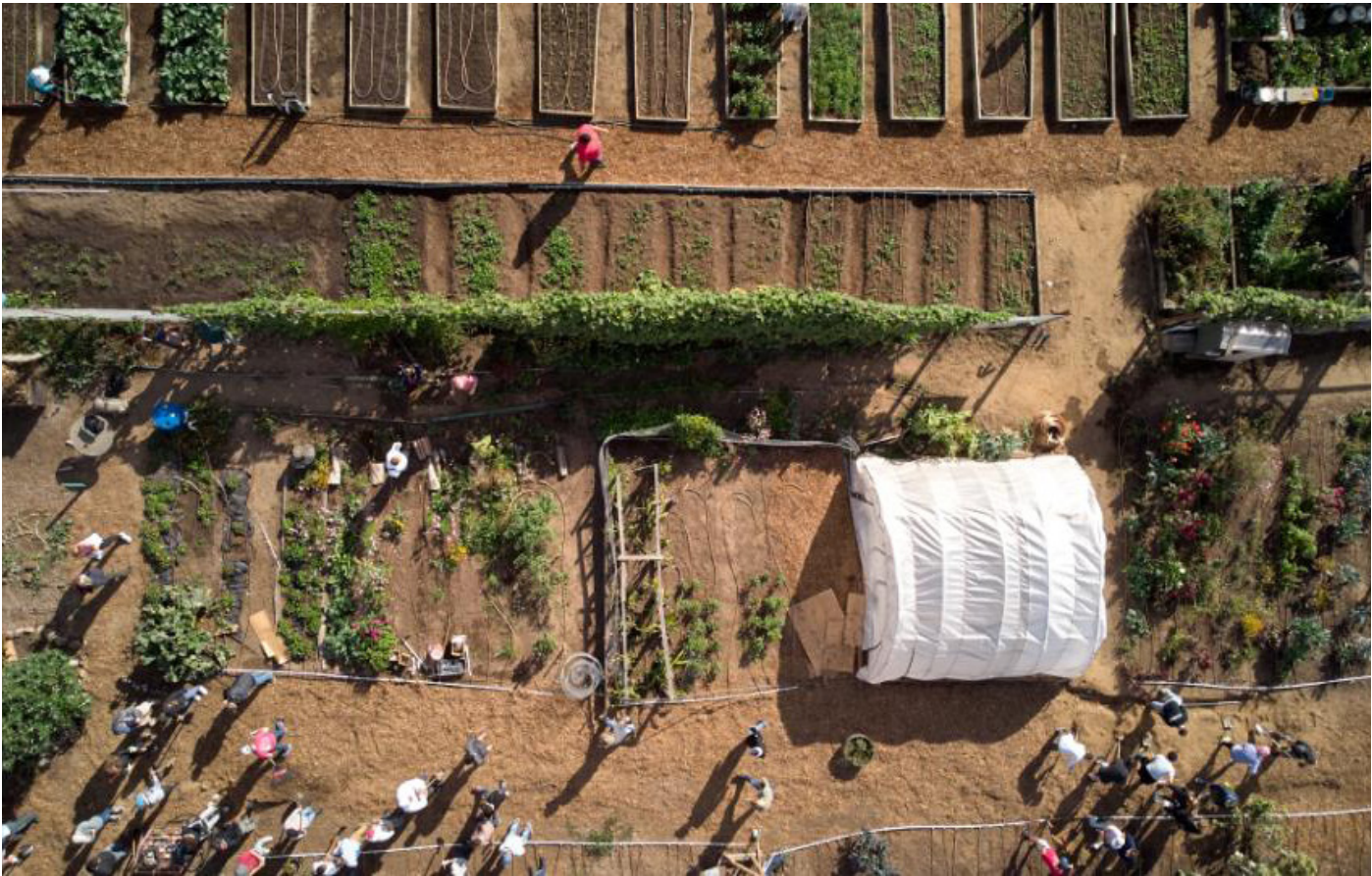
Environment & Community Health

Responding to Climate and Community Crises

Firms contributed to paid internships that empower young leaders to address environmental harms, climate change, and equitable food systems. These programs cultivate inclusive spaces and provide healing for communities impacted by racism, anti-immigrant bias, and queer-trans antagonism.



Volunteers help restore native habitat, remove trash from creeks, and expand the accessibility of scientific research through community science



Florence Fang Community Farm



Youth explored science through hands-on chemistry experiments



Students explored engineering concepts to understand the practical applications of soil permeability in real-world projects

Upcountry Impact: Tuolumne County

Deep Roots. Lasting Change.

SIP’s Commitments to our Upcountry service territory remains strong. Programs supported by Sonora Area Foundation this year include:

- Tuolumne Collaborative Construction Pre-Apprenticeship Program
- STEM Education Initiatives
- “Not My Kid” Youth Mental Health Education
- Amador Tuolumne Community Action Agency Food Bank
- Sonora High School Auditorium Lighting Upgrade
- Career Technical Education Program



Tuolumne Collaborative Construction Pre-Apprenticeship Training Program Cohort 14



Gender equity workforce programs through immersive training



# Spotlight on Community Partnerships

Darrell Slocum of the Sonora Area Foundation shared:

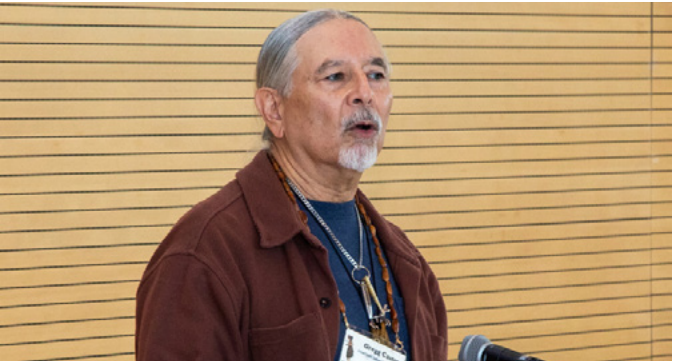
“The impact of these contributions extends beyond the immediate beneficiaries. They strengthen the fabric of our community, foster economic opportunity, and enhance the overall quality of life for Tuolumne County residents... a testament to the power of collaboration.”



Social Impact Partnerships Beneficiary Convening at the Southeast Community Center



Afro-Colombian dance performance



Gregg Castro, Culture Director at the Association of Ramaytush Ohlone, opening the event with a Ramaytush Indigenous grounding



SONORA AREA FOUNDATION

For good. For ever.

March 5, 2025

Dear San Francisco Public Utilities Commission,

We are writing to express our sincere gratitude for the significant positive impact your Social Impact Program (SIP) has had on Tuolumne County. The charitable contributions from SFPUC SIP partners, directed through Sonora Area Foundation, have provided crucial support to numerous vital community initiatives, strengthening our region and improving the lives of our residents.

Sonora Area Foundation has successfully channeled these funds to address critical needs within our community and support impactful programs. We would like to highlight several key areas where SIP has made a tangible difference:

- Sonora High School Auditorium Lighting Upgrade Project:** This project has significantly enhanced the school's ability to host events, performances, and community gatherings, providing invaluable resources for students and the wider community.
- ATCAA Food Bank:** Your support has bolstered the food bank's capacity to provide essential food assistance to vulnerable individuals and families in Tuolumne County, addressing food insecurity and ensuring access to vital resources.
- Tuolumne Collaborative Workforce Development Pre-Apprenticeship Construction Training Program:** This program has empowered local residents with valuable skills and training, opening pathways to sustainable employment and contributing to the economic development of our region.
- Not My Kid (Youth Mental Health Education Program):** Your funding has enabled the expansion of critical mental health education programs, providing support and resources to young people and addressing the growing need for mental health services in our community.
- Career Technical Education Programs in Tuolumne County:** SIP has provided vital financial support to numerous career technical education programs, ensuring that our students have access to the skills and training necessary to succeed in today's workforce.
- STEM Education:** Several grants have been awarded to the Tuolumne County Superintendent of Schools Office in support of STEM Education including Mad About Science and Dinner with a Scientist.

362 South Stewart Street • Sonoma, California 95370 • [www.sonora-area.org](http://www.sonora-area.org) • Fax (209) 535-2112 • Phone (209) 535-2596

The impact of these contributions extends beyond the immediate beneficiaries. They strengthen the fabric of our community, foster economic opportunity, and enhance the overall quality of life for Tuolumne County residents.

We commend the SFPUC for its commitment to social responsibility and its dedication to partnering with local organizations to make a meaningful difference. The SIP's effectiveness, as demonstrated through its partnership with the Sonora Area Foundation, is a testament to the power of collaboration and the positive impact that can be achieved when public agencies and community foundations work together.

We appreciate your continued investment in Tuolumne County and look forward to the ongoing success of the Social Impact Program.

Sincerely,



Darrell Slocum, CEO  
Sonora Area Foundation

## Beneficiary Convening Event

### Building Relationships. Expanding the Circle.

Following the success of last year's Firm Convening, this year the SIP team launched its first Beneficiary Convening to deepen connections between SFPUC staff and Beneficiaries. The event provided resources to nonprofits and public education providers who are interested in registering as a Beneficiary.

Attendees received a comprehensive orientation on SIP's Beneficiary Registry, reporting expectations, and available resources, including College Hill, Project Pull, Water Conservation, CleanPowerSF, and Project Learning Grants. The Beneficiary Convening intentionally centered arts and culture; it opened with a Ramaytush Indigenous grounding, included an Afro-Colombian dance performance, and celebrated with Latino cuisine.

### Public Dashboard Update

Transparent Data. Powerful Impact.

At the Beneficiary Convening event we shared the re-imagined [Public Dashboard](#) that is more intuitive, user-friendly, and visually dynamic. The dashboard will make it easier than ever to see SIP contributions and the programs they support by publicly sharing the nonprofit and public education beneficiaries. Through data-driven performance management, continuous program improvement, and collaborative stakeholder engagement, the Social Impact Partnership Program ensures that these contributions translate into real, lasting impacts for residents across our service area.



# Staying Engaged



Student watering the edible garden



A hummingbird spotted at College Hill Learning Garden. Hummingbirds are important pollinators in California ecosystems.

We are proud to present our ongoing commitment to fostering meaningful connections with our community. Your engagement is invaluable to us, whether you are a community member, student, volunteer, nonprofit organization, foundation, firm, or government agency, we extend an open invitation to join us in advancing Community Benefits and Environmental Justice for all. We look forward to collaborating in the near future. In the meantime, check out these opportunities and resources:

- [Reserve space for your next event](#) at our Southeast Community Center (SECC)
  - Stay up to date with [upcoming events](#) at SECC
  - Visit our Facebook and Instagram: **@secc.1550**
- Read our [Big Ideas](#) curriculum to learn how teachers and schools can integrate water, power, and sewer concepts into environmental education
- Book a field trip or tour at our [College Hill Learning Garden](#)
- Volunteer at a gardening day in San Francisco
  - [Hummingbird Farm \(Excelsior\)](#)
  - [Garden for the Environment \(Inner Sunset\)](#)
- Submit your artwork to the [San Francisco Arts Commission's Bayview Artist Registry](#)
- Learn more about how your firm or organization participate in our [Social Impact Partnership Program](#)
- Learn more about our [Project Learning Grant Program](#)
- [Save water](#) in your home, garden, or business