



San Francisco
Water Power Sewer
Services of the San Francisco Public Utilities Commission

**Water Enterprise Capital Improvement Program
Project Labor Agreement
Quarterly Report**

**October 1, 2024, through December 31, 2024
(Second Quarter FY 2024-2025)**

SFPUC
Infrastructure Division
Workforce and Economic Program Services Bureau
525 Golden Gate Avenue, 9th Floor
San Francisco, CA 94102

San Francisco Public Utilities Commission
Water Enterprise Capital Improvement Program Project Labor Agreement
Quarterly Report – Second Quarter FY 2024-2025

Table of Contents

Executive Summary	3
Contracting and Employment Highlights – Program to Date	3
Table 1. Worker Highlights – Total Program	3
Contracting and Employment Highlights – During the Quarter	4
Table 2. Summary of Craft Worker Employment During the Quarter	4
Table 3. List of WECIP Construction Contracts	5
Summary Tables and Charts	6
Chart 1. Craft Hours and Wages	6
Table 4. Craft Utilization Table	7
Chart 2. Craft Utilization Pie Chart	8
Table 5. Worker Residence by County	9
Table 6. Worker Residence by Project	10
Apprentice Data	11
Table 7. Apprentice Utilization by Craft	11
Table 8. Apprentice Utilization by Project	12
Substance Abuse Prevention Program and Safety	13
Table 9. Workers’ Pre-Employment Clearance Data	13
History of the WSIP PLA and SSIP Extension Agreement.....	14
Governance and Certified Payroll Reporting System	15

Executive Summary

Contracting and Employment Highlights – Program to Date

- Twenty-three (23) construction contracts, with a combined value of \$673.4 million, have been awarded.
- 305,555 total craft hours have been worked by 2,012 workers who earned \$24.1 million in wages and benefits.
- 328 San Francisco residents worked 73,266 hours and earned \$5.6 million in wages and benefits on WECIP projects representing 24% of covered hours.
- 748 residents of the SFPUC’s Regional Service Territory worked 104,927 hours (34.3%) and earned \$8.3 million in wages and benefits.
- 294 pre-employment substance abuse tests have been administered to employees cleared to work on WECIP projects as of December 31, 2024.

Table 1. Worker Highlights – Total Program

Region of Worker Residence	Inception Through December 31, 2024		
	Hours	Wages & Benefits	Worker Count
Outside	127,362	\$ 10,177,988	959
San Francisco	73,266	\$ 5,638,710	328
Service Territory	104,927	\$ 8,302,192	748
Grand Total	305,555	\$ 24,118,891	2,012
Comb. SF and Serv.	178,193	\$ 13,940,902	1,076

San Francisco Public Utilities Commission
 Water Enterprise Capital Improvement Program Project Labor Agreement
 Quarterly Report – Second Quarter FY 2024-2025

Contracting and Employment Highlights – During the Quarter

- Three WECIP contracts were awarded during the quarter.
- 378 construction workers worked 39,134 hours and earned \$3,232,530 in wages and benefits.
- 70 San Francisco residents worked 8,016 hours and earned \$675,539 in wages and benefits.
- 139 SFPUC Service Territory residents worked 14,287 hours and earned \$1,164,490 in wages and benefits.

Table 2. Summary of Craft Worker Employment During the Quarter

Region of Worker Residence	Three Months Ending December 31, 2024		
	Hours	Wages & Benefits	Worker Count
Outside	16,832	\$ 1,392,500	169
San Francisco	8,016	\$ 675,539	70
Service Territory	14,287	\$ 1,164,490	139
Grand Total	39,134	\$ 3,232,530	378
Comb. SF and Serv.	22,303	\$ 1,840,029	209

San Francisco Public Utilities Commission
Water Enterprise Capital Improvement Program Project Labor Agreement
Quarterly Report – Second Quarter FY 2024-2025

Table 3. List of WECIP Construction Contracts

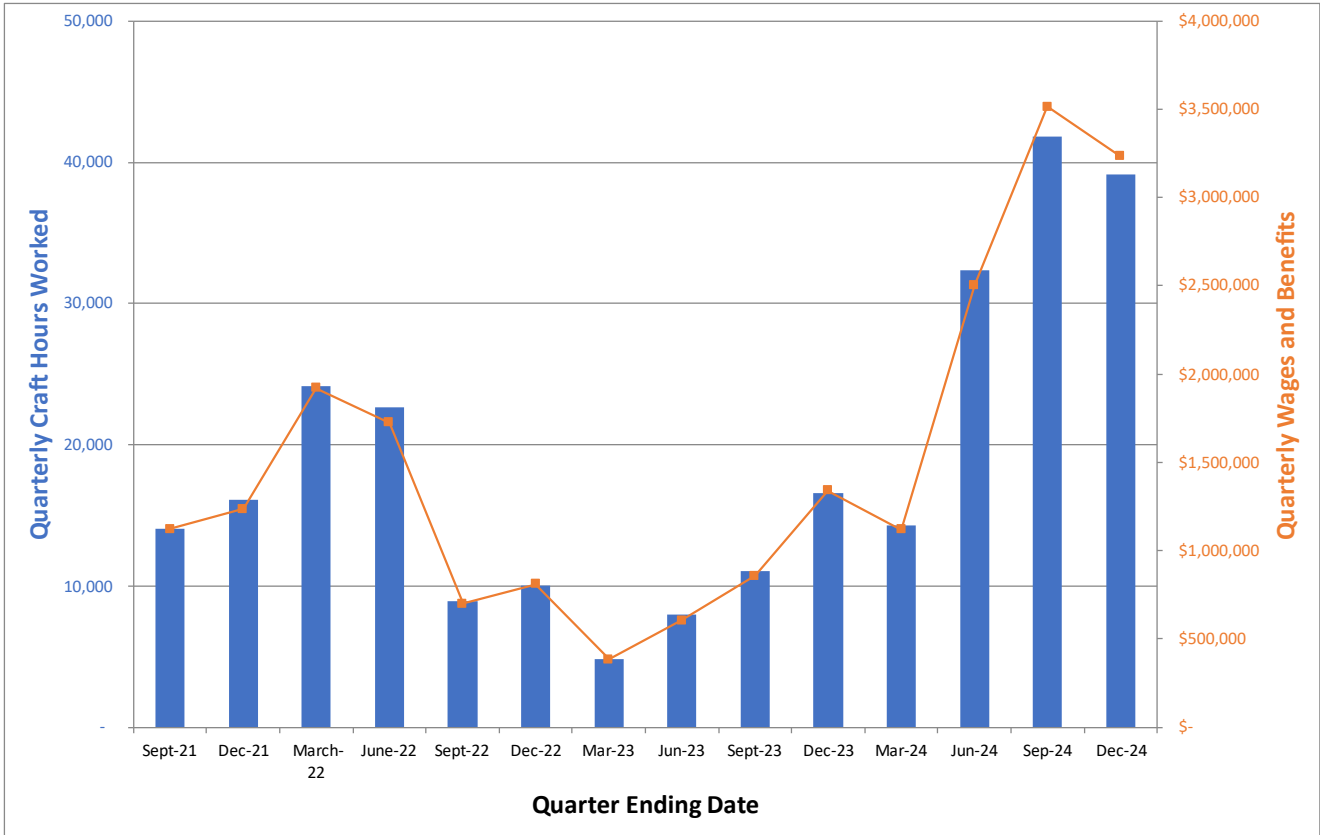
Sorted by Award Date (newest to oldest)

WECIP Construction Contracts				
Inception through December 31, 2024				
Contract	Project	Award Date	Prime Contractor	Original
WD-2910	Procurement and Installation of Medium and Large Diameter Valves for Regional Pipelines	11/12/2024	Anvil Builders, Inc.	\$ 4,807,600
WD-2883R	Millbrae Yard Security Upgrades	10/22/2024	Rodan Builders, Inc.	\$ 8,204,000
WD-2906	Town of Sunol Pipeline Replacement at Arroyo de la Laguna Creek	10/22/2024	Mitchell Engineering	\$ 4,789,385
WD-2903	Site Remediation at 520 John Muir Drive Phase 2	5/28/2024	Anvil Builders, Inc.	\$ 2,186,888
WD-2897	Sunol Valley Water Treatment Plant Ozonation	5/14/2024	J.F. Shea Construction, Inc.	\$ 234,782,000
WD-2895	San Francisco Zoo Recycled Water	2/13/2024	Basset Engineering	\$ 2,175,723
WD-2893	Sunol Valley Chemical Facility Improvements	2/13/2024	Anvil Builders Inc.	\$ 9,348,500
WD-2862	San Antonio Pump Station Motor Control Center Replacement and Seismic Retrofit	12/12/2023	Big Valley Electric	\$ 8,869,322
WD-2902	San Andreas Reservoir Road Improvements	11/14/2023	Anvil Builders Inc.	\$ 10,491,406
WD-2840	Southern Skyline Boulevard Ridge Trail Extension	9/26/2023	Gordon N. Ball, Inc.	\$ 20,523,445
WD-2889	As Needed Water Service Line Replacements	1/24/2023	JMB Construction, Inc.	\$ 26,663,850
WD-2845	Cathodic Protection for Transmission Pipelines at Various Locations, Phase 2	10/24/2022	EXARO Technologies Corporation	\$ 3,274,441
WD-2887	Harry Tracy Water Treatment Plant – Filters No. 1 to 6 Underdrain Replacement	7/12/2022	Anvil Builders Inc.	\$ 9,264,300
WD-2879R	City Distribution Division Campus at 2000 Marin	6/28/2022	Clark Construction Group	\$ 260,450,682
WD-2871	Sunol Valley Water Treatment Plant and Chloramination Facility Aqua Ammonia Structural Repairs and Tank Replacement	11/9/2021	Cal State Constructors	\$ 1,769,014
WD-2880R	Warehouse Office Suite Renovation, 1990 Newcomb Avenue, San Francisco	8/10/2021	Galleria Inc., DBA Trico Construction	\$ 1,328,039
WD-2717	College Hill Reservoir Outlet Structure and Pipeline	6/8/2021	Ranger Pipelines	\$ 12,180,497
WD-2865	Sunol Regional Wilderness Park Water System	2/9/2021	Cratus, Inc	\$ 2,395,280
WD-2870(I)	Millbrae Warehouse Loading Dock Repair	1/27/2021	Ronan Construction	\$ 570,745
WD-2858R	Sunol Valley Water Treatment Plant Water Quality Modular Office	10/13/2020	Alta Group, Inc.	\$ 1,096,200
WD-2861	Auxiliary Water Supply System Clarendon Supply 2019	9/8/2020	Mitchell Engineering	\$ 2,685,720
WD-2794B	Sunol Long Term Improvements - Alameda Creek Watershed Center	12/10/2019	S.J. Amoroso Construction Company, Inc.	\$ 27,577,000
WD-2687R	AWSS Pumping Station No. 2 Improvements	9/12/2017	Rubecon Builders, Inc.	\$ 17,949,125
23 Projects				\$ 673,383,162

Summary Tables and Charts

Chart 1. Craft Hours and Wages

- During the quarter, construction workers worked 39,134 hours and earned \$3,232,530 in wages and benefits.



San Francisco Public Utilities Commission
Water Enterprise Capital Improvement Program Project Labor Agreement
Quarterly Report – Second Quarter FY 2024-2025

Table 4. Craft Utilization Table

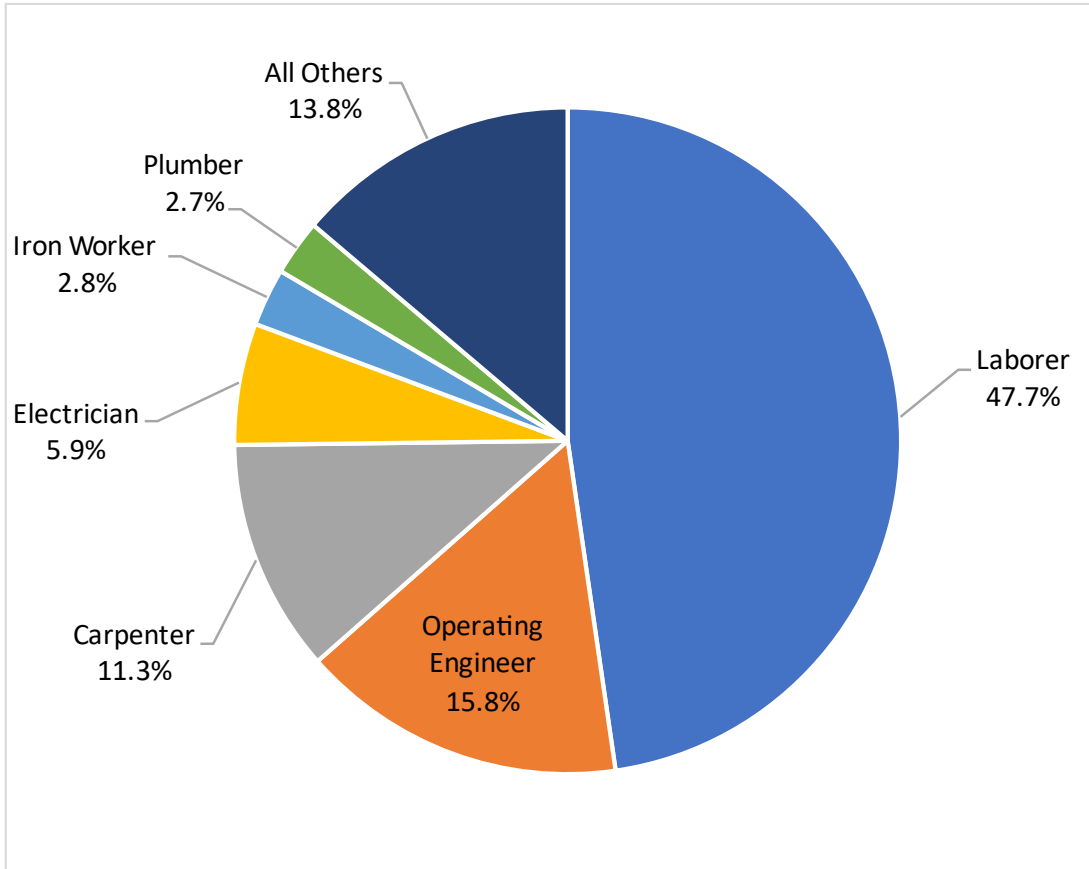
The table below reflects the values of hours and wages for each trade and the relative percentages of each as compared to the WECIP program’s overall totals.

- Contractors reported construction craft hours in 26 craft worker classifications.
- Laborers, Operating Engineers, Carpenters, Electricians, Iron Workers, and Plumbers worked 86.2% of all hours, with 263,650 combined hours worked.

Cumulative Employment by Craft				
Inception Through December 31, 2024				
Craft	Total Hours	Total Wages	% Craft Hours of Total Hours	% Wages of Total Wages
Laborer	145,789	\$ 9,551,184	47.7%	39.6%
Operating Engineer	48,403	\$ 4,545,179	15.8%	18.8%
Carpenter	34,615	\$ 3,078,679	11.3%	12.8%
Electrician	18,133	\$ 2,014,557	5.9%	8.4%
Iron Worker	8,470	\$ 646,177	2.8%	2.7%
Plumber	8,240	\$ 829,627	2.7%	3.4%
Top 6 Crafts Sub-Total	263,650	\$ 20,665,403	86.2%	85.7%
Painter	7,764	\$ 668,143	2.5%	2.8%
Roofer	7,193	\$ 445,612	2.4%	1.8%
Cement Mason	5,531	\$ 429,577	1.8%	1.8%
Sheet Metal Worker	4,892	\$ 478,957	1.6%	2.0%
Glazier	3,573	\$ 317,281	1.2%	1.3%
Drywall Installer/Lather	2,740	\$ 235,814	0.9%	1.0%
Building/Construction Inspector	1,985	\$ 162,052	0.6%	0.7%
Tile Setter	1,449	\$ 116,172	0.5%	0.5%
Tile Finisher	1,026	\$ 53,725	0.3%	0.2%
Pile Driver	836	\$ 80,624	0.3%	0.3%
Terrazzo Finisher	541	\$ 24,853	0.2%	0.1%
Asbestos Worker	242	\$ 23,723	0.1%	0.1%
Field Surveyor	126	\$ 8,585	0.0%	0.0%
Carpet Layer	100	\$ 7,990	0.0%	0.0%
Bricklayer	32	\$ 2,890	0.0%	0.0%
Marble Mason	15	\$ 1,338	0.0%	0.0%
Marble Finisher	13	\$ 776	0.0%	0.0%
Terrazzo Worker	7	\$ 371	0.0%	0.0%
Remaining Apprenticesable Sub-Total	38,063	\$ 3,058,480	12.5%	12.7%
Driver	3,778	\$ 388,990	1.2%	1.6%
Teamster	64	\$ 6,017	0.0%	0.0%
Total Non-Apprenticesable	3,842	\$ 395,007	1.3%	1.6%
Grand Total	305,555	\$ 24,118,891	100.0%	100.0%

San Francisco Public Utilities Commission
Water Enterprise Capital Improvement Program Project Labor Agreement
Quarterly Report – Second Quarter FY 2024-2025

Chart 2. Craft Utilization Pie Chart



San Francisco Public Utilities Commission
Water Enterprise Capital Improvement Program Project Labor Agreement
Quarterly Report – Second Quarter FY 2024-2025

Table 5. Worker Residence by County

- When comparing the counties where workers are from, San Francisco’s residents worked 24% of all the construction hours and earned \$5.6 million in wages and benefits, as reported in the City’s online certified payroll reporting system, LCPtracker, Inc.

WECIP-PLA Employment by Top 10 Counties of Residence Through December 31, 2024			
County	Total Craft Hours	Wages & Benefits	% Craft Hours
San Francisco County	73,266	\$ 5,638,710	24.0%
Alameda County	48,286	\$ 3,738,607	15.8%
Contra Costa County	40,771	\$ 3,163,906	13.3%
San Mateo County	28,932	\$ 2,324,375	9.5%
Santa Clara County	27,830	\$ 2,195,060	9.1%
Solano County	18,428	\$ 1,504,811	6.0%
San Joaquin County	17,930	\$ 1,379,275	5.9%
Sonoma County	11,693	\$ 1,112,763	3.8%
Santa Cruz County	6,824	\$ 551,675	2.2%
Marin County	6,067	\$ 394,039	2.0%
Top 10 CA Counties	280,027	\$ 22,003,221	91.6%
All Other CA Counties	22,903	\$ 1,888,499	7.5%
Out of State	2,625	\$ 227,171	0.9%
Grand Total	305,555	\$ 24,118,891	100.0%

San Francisco Public Utilities Commission
Water Enterprise Capital Improvement Program Project Labor Agreement
Quarterly Report – Second Quarter FY 2024-2025

Table 6. Worker Residence by Project

- WD-2880R - Warehouse Office Suite Renovation, 1990 Newcomb Avenue, San Francisco has the highest local worker participation to date on WECIP, with San Francisco and SFPUC Regional Service Territory workers having worked 80.3% of the project’s total hours.

Sorted by San Francisco and Service Territory Total Percent

Project	Hours				% of Total Project Hours		
	Outside	San Francisco	Service Territory	Grand Total	San Francisco	Service Territory	SF and Serv
WD-2880R - Warehouse Office Suite Renovation, 1990 Newcomb Avenue, San Francisco	961	1,668	2,251	4,880	34.2%	46.1%	80.3%
WD-2865 - Sunol Regional Wilderness Park Water System	1,353	2,461	2,456	6,269	39.3%	39.2%	78.4%
WD-2861 - Auxiliary Water Supply System Clarendon Supply 2019	1,598	2,674	1,703	5,975	44.7%	28.5%	73.2%
WD-2902 - San Andreas Reservoir Road Improvements	9,479	5,183	12,809	27,471	18.9%	46.6%	65.5%
WD-2879R - City Distribution Division Campus at 2000 Marin	1,060	1,095	624	2,779	39.4%	22.5%	61.8%
WD-2687R - Auxiliary Water Supply System Pumping Station No. 2 Improvements	16,578	13,963	12,598	43,139	32.4%	29.2%	61.6%
WD-2717 - College Hill Reservoir Outlet Structure and Pipeline	21,213	22,582	11,257	55,052	41.0%	20.4%	61.5%
WD-2870(I) - Millbrae Warehouse Loading Dock Repair	501	558	180	1,239	45.0%	14.5%	59.6%
WD-2794B - Sunol Long Term Improvements - Alameda Creek Watershed Center	25,985	3,732	33,270	62,986	5.9%	52.8%	58.7%
WD-2858R - Sunol Valley Water Treatment Plant Water Quality Modular Office	758	614	448	1,820	33.7%	24.6%	58.3%
WD-2887 - Harry Tracy Water Treatment Plant - Filter Nos. 1 to 6 Underdrain Replacement	5,389	3,266	3,526	12,180	26.8%	28.9%	55.8%
WD-2889 - As Needed Water Service Line Replacements	14,230	11,797	4,829	30,856	38.2%	15.6%	53.9%
WW-671(I) Fillmore and Haight Street Intersection, AWSS, Pavement, and Sewer Replacement	1,377	870	251	2,497	34.8%	10.1%	44.9%
WD-2840 - Southern Skyline Blvd. Ridge Trail Extension	21,544	2,187	15,340	39,072	5.6%	39.3%	44.9%
WD-2897 - Sunol Valley Water Treatment Plant Ozonation	3,552	-	2,872	6,423	0.0%	44.7%	44.7%
WD-2871 - Sunol Valley Water Treatment Plant and Chloramination Facility Aqua Ammonia Structural Repairs and Tank Replacement	687	260	223	1,169	22.2%	19.0%	41.2%
WD-2845 - Cathodic Protection for Transmission Pipelines at Various Locations, Phase 2	1,098	362	292	1,751	20.7%	16.7%	37.3%
Grand Total	127,362	73,266	104,927	305,555	24.0%	34.3%	58.3%

San Francisco Public Utilities Commission
Water Enterprise Capital Improvement Program Project Labor Agreement
Quarterly Report – Second Quarter FY 2024-2025

Apprentice Data

The California Division of Apprenticeship Standards (DAS) consults with employers to develop a skilled workforce with viable career pathways to increase productivity and strengthen California’s economy. DAS minimum ratios requires apprentices be utilized in the ratios applicable to each craft, generally one apprentice hour to every five journeymen hours at the end of the project. However, an employer can and is encouraged to employ an apprentice as the second person on the job whenever possible and allowed by the apprenticeship program standards.

Table 7. Apprentice Utilization by Craft

- On WECIP, 13.6% of all craft hours in apprenticeable trades have been worked by apprentices.
- Field Surveyor have utilized the most apprentices, with 45% of all hours being worked by apprentices.
- Apprentice Laborers have worked 10.8% of the Laborers’ 145,789 total craft hours.

Craft	Apprentice Hours	Journey Hours	Total Hours	Apprentice Percentage of Craft Total (Apprentice/Total)
Field Surveyor	57	69	126	45.0%
Roofer	2,995	4,198	7,193	41.6%
Pile Driver	251	586	836	30.0%
Drywall Installer/Lather	786	1,954	2,740	28.7%
Carpet Layer	24	76	100	24.0%
Tile Finisher	234	792	1,026	22.8%
Iron Worker	1,805	6,666	8,470	21.3%
Electrician	3,577	14,556	18,133	19.7%
Plumber	1,577	6,664	8,240	19.1%
Sheet Metal Worker	877	4,015	4,892	17.9%
Carpenter	5,836	28,779	34,615	16.9%
Painter	1,140	6,624	7,764	14.7%
Operating Engineer	5,663	42,740	48,403	11.7%
Laborer	15,719	130,070	145,789	10.8%
Tile Setter	139	1,310	1,449	9.6%
Building/Construction Inspector	130	1,856	1,985	6.5%
Cement Mason	162	5,369	5,531	2.9%
Glazier	56	3,517	3,573	1.6%
Asbestos Worker	-	242	242	0.0%
Bricklayer	-	32	32	0.0%
Marble Finisher	-	13	13	0.0%
Marble Mason	-	15	15	0.0%
Terrazzo Finisher	-	541	541	0.0%
Terrazzo Worker	-	7	7	0.0%
Apprenticeable Subtotal	41,025	260,688	301,713	13.6%
Driver	-	3,778	3,778	0.0%
Teamster	-	64	64	0.0%
Grand Total	41,025	264,531	305,555	13.4%

San Francisco Public Utilities Commission
Water Enterprise Capital Improvement Program Project Labor Agreement
Quarterly Report – Second Quarter FY 2024-2025

Table 8. Apprentice Utilization by Project

The table below lists WECIP Projects sorted by Percentage of Apprentice Utilization from highest to lowest. The total Apprentice Utilization for the entire WECIP is 13.4%.

- WD-2687R Auxiliary Water Supply System Pumping Station No.2 Improvements has the highest apprentice utilization ratio, with 24.2% of all hours worked by apprentices.

Project Name	Apprentice Hours	Journey Hours	Grand Total	Appr. Utilization %
WD-2687R - Auxiliary Water Supply System Pumping Station No. 2 Improvements	10,428	32,711	43,139	24.2%
WD-2794B - Sunol Long Term Improvements - Alameda Creek Watershed Center	8,795	54,191	62,986	14.0%
WD-2861 - Auxiliary Water Supply System Clarendon Supply 2019	818	5,157	5,975	13.7%
WD-2902 - San Andreas Reservoir Road Improvements	3,736	23,734	27,471	13.6%
WD-2879R - City Distribution Division Campus at 2000 Marin	369	2,410	2,779	13.3%
WD-2858R - Sunol Valley Water Treatment Plant Water Quality Modular Office	236	1,584	1,820	13.0%
WD-2717 - College Hill Reservoir Outlet Structure and Pipeline	6,935	48,117	55,052	12.6%
WD-2865 - Sunol Regional Wilderness Park Water System	770	5,499	6,269	12.3%
WD-2840 - Southern Skyline Blvd. Ridge Trail Extension	4,296	34,776	39,072	11.0%
WD-2871 - Sunol Valley Water Treatment Plant and Chloramination Facility Aqua Amr	125	1,044	1,169	10.7%
WD-2887 - Harry Tracy Water Treatment Plant - Filter Nos. 1 to 6 Underdrain Replacem	1,202	10,978	12,180	9.9%
WD-2889 - As Needed Water Service Line Replacements	2,538	28,318	30,856	8.2%
WD-2880R - Warehouse Office Suite Renovation, 1990 Newcomb Avenue, San Francisc	349	4,531	4,880	7.2%
WD-2897 - Sunol Valley Water Treatment Plant Ozonation	419	6,005	6,423	6.5%
WD-2845 - Cathodic Protection for Transmission Pipelines at Various Locations, Phas	10	1,741	1,751	0.6%
WD-2870(I) - Millbrae Warehouse Loading Dock Repair	-	1,239	1,239	0.0%
WW-671(I) Fillmore and Haight Street Intersection, AWSS, Pavement, and Sewer Repl	-	2,497	2,497	0.0%
Grand Total	41,025	264,531	305,555	13.4%

Substance Abuse Prevention Program and Safety

The PLA requires pre-employment alcohol and drug testing for all covered employees. The policy also allows testing where the contractor has reasonable cause to believe that the employee has used drugs or alcohol, and mandates testing where a contractor concludes that an employee was under the influence of drugs or alcohol at the time of an accident.

Table 9. Workers’ Pre-Employment Clearance Data

- 294 pre-employment tests have been administered on WECIP with a total non-negative screening rate of **2%**.

WECIP - Covered by PLA Substance Abuse Testing Summary Tests Administered to Individuals Cleared to Work Through 12/31/2024	
Project	Number Cleared
WD-2794B - Sunol Long Term Improvements Alameda Creek Watershed Center	111
WD-2717 - College Hill Reservoir Outlet Structure And Pipeline	53
WD-2880R - Warehouse Office Suite Renovation, 1990 Newcomb Avenue, San Francisco	46
WD-2879R - City Distribution Division Campus at 2000 Marin	57
WD-2687R - AWSS Pumping Station No.2 Improvement	20
Total Cleared	287

History of the WSIP PLA and SSIP Extension Agreement

On April 8, 2003, the San Francisco Board of Supervisors adopted Resolution 223-03 urging the San Francisco Public Utilities Commission (SFPUC) to develop plans for a Project Labor Agreement (PLA) covering the capital improvement program to rehabilitate, repair, and upgrade the Hetch Hetchy Water System.

On May 20, 2003, the San Francisco Board of Supervisors adopted Resolution 350-03 urging the SFPUC to include social justice components in the PLA covering the Hetch Hetchy Water System upgrade.

On May 11, 2006, the San Francisco Board of Supervisors amended the San Francisco Administrative Code to establish a Small Firm Advisory Committee to provide for the certification of small construction contractors located outside of San Francisco and within the SFPUC Regional Service Territory for work on SFPUC construction projects, including those covered by the PLA.

On March 28, 2006, the SFPUC adopted Resolution No. 06-0049 authorizing SFPUC staff to commence negotiations with the various craft labor unions for a project labor agreement covering the Water System Improvement Program (WSIP). Resolution No. 06-0049 concluded that the governmental interests of the SFPUC were furthered by a project labor agreement as follows:

“There are numerous advantages in moving forward on the negotiation of a PLA, which include but are not limited to the following: creates framework for labor harmony; mitigates against construction delays; assures steady supply of qualified labor; provides employment, career, and local business opportunities; and other benefits...”

On March 26, 2007, the SFPUC approved the negotiated agreement. The PLA requires construction contractors to utilize workers dispatched by signatory unions, and prohibits the unions and contractors from participating in strikes, lockouts, or other disruptions to the work. The PLA provides a procedure for adjudicating conflicting jurisdictional claims between the unions, provides for uniform hours of work, overtime, shifts and holidays, encourages the recruitment and training of low-income residents of the SFPUC service territory, and requires substance abuse testing for all covered workers. The first implementation of the PLA was on the WD-2504 Stanford Heights Reservoir Seismic Retrofit and Improvement project, which the SFPUC awarded to S.J. Amoroso Construction Company, LLC., on June 26, 2007, in the amount of \$17,899,960.

In 2008, the Commission approved Addendum No. 1 of the Agreement, which extended the Agreement to the Advanced Meter Infrastructure (AMI) project.

In May 2016, the Commission approved an Extension Agreement, which applied the terms of the PLA, as modified in the Extension Agreement, to Sewer System Improvement Program (SSIP) projects and the AWSS Pumping Station 2 project.

Governance and Certified Payroll Reporting System

The parties to the PLA have established a four-person Joint Administrative Committee that reviews the implementation and progress of the PLA and provides guidance to questions or concerns that arise in connection with the PLA. The Workforce and Economic Program Services team, within the SFPUC's Infrastructure Division, administers the PLA under the advisement of the Joint Administrative Committee.

Prior to the commencement of construction, representatives of participating contractors and subcontractors, the unions, and SFPUC staff, are required to attend a PLA Pre-Job Conference. At the conference, the general contractor and subcontractors must present their scope of work and make union assignments of the work based on traditional craft jurisdictional lines. When conflicting claims for work are submitted to a contractor, the corresponding Jurisdictional Dispute Resolution procedures, as specified for the trades involved, is invoked so as to prevent delay or disruption of the work.

All SFPUC construction projects utilize the City's authorized labor compliance reporting program, currently the web-based system, LCPtracker, Inc. The data from the certified payrolls records collected by LCPtracker, Inc. have been compiled to produce the information in this report.