

APPENDIX A

COMPLETE ENGAGEMENT REPORTS



BACK TO SCHOOL NIGHT SUMMARY

DATE OF EVENT: 9/24/2024

TIME: 5:30-8:00PM

ATTENDANCE:

Jimmy Fu, SFPUC

Rosey Jencks, Brown and Caldwell

Vincent Mazzaferro, SFPUC

Patricia Algara, BASE Landscape Architecture

Hannah Greendorfer, BASE Landscape Architecture

POPULATION REACHED:

During the APG Back to School Night engagement event, we mainly connected with parents, along with a few students and their siblings. We also had the opportunity to meet a couple of former APG employees as well as parent volunteers.

CONSIDERATIONS/CONCERNS:

While the event served as a good first introduction of the SFPUC green infrastructure project to the school community, it was challenging to engage with attendees due to the short 5 minute passing periods between sessions. As a result, we primarily received responses from parents rather than students and the most engagement occurred in the beginning of the event. Unfortunately, almost no teachers or administrators were available for feedback, as most were occupied with their Back to School Night duties and in the classrooms.

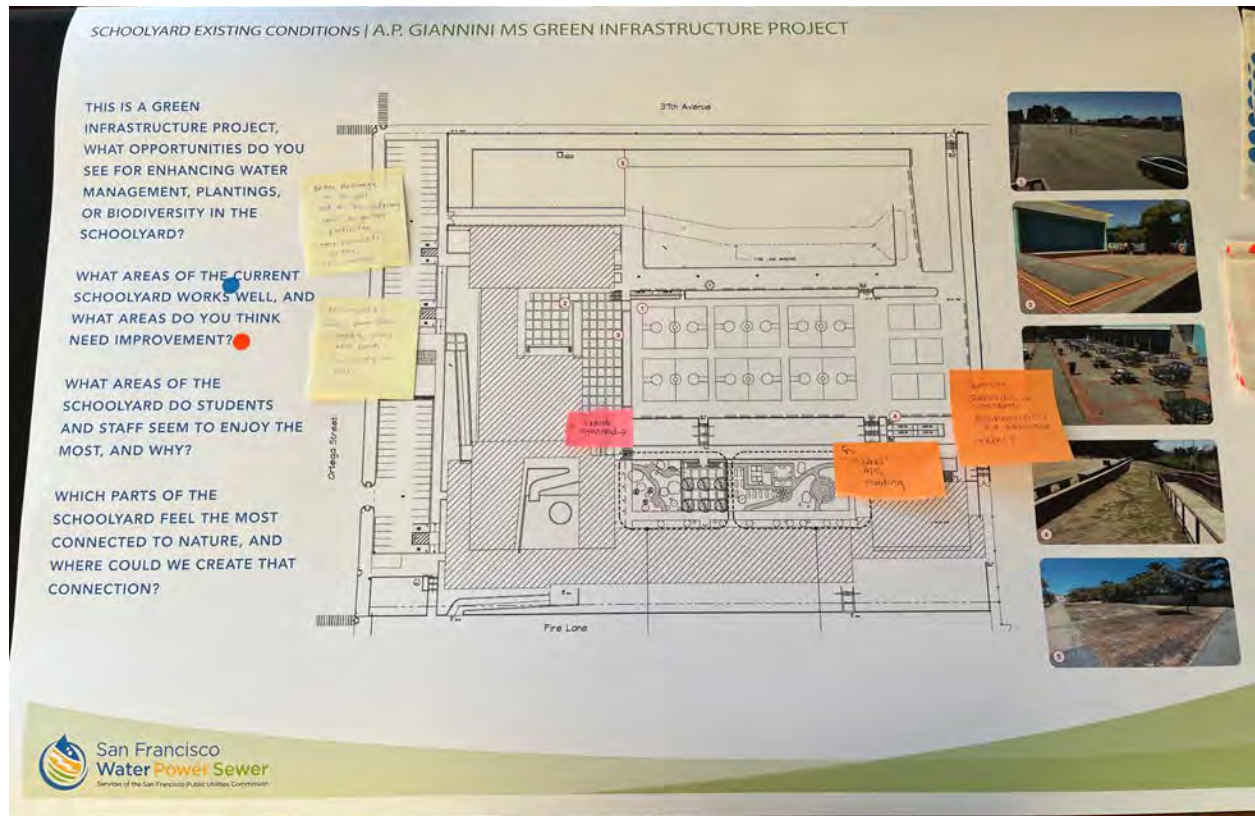
PHOTOS FROM THE EVENT:





GENERAL FEEDBACK RECEIVED AND POSTER BOARDS:

Feedback was documented with post it notes and sticky dot voting, as well as notes taken by those in attendance. The **BLUE** dots are LIKE and **ORANGE** stickers are DISLIKE



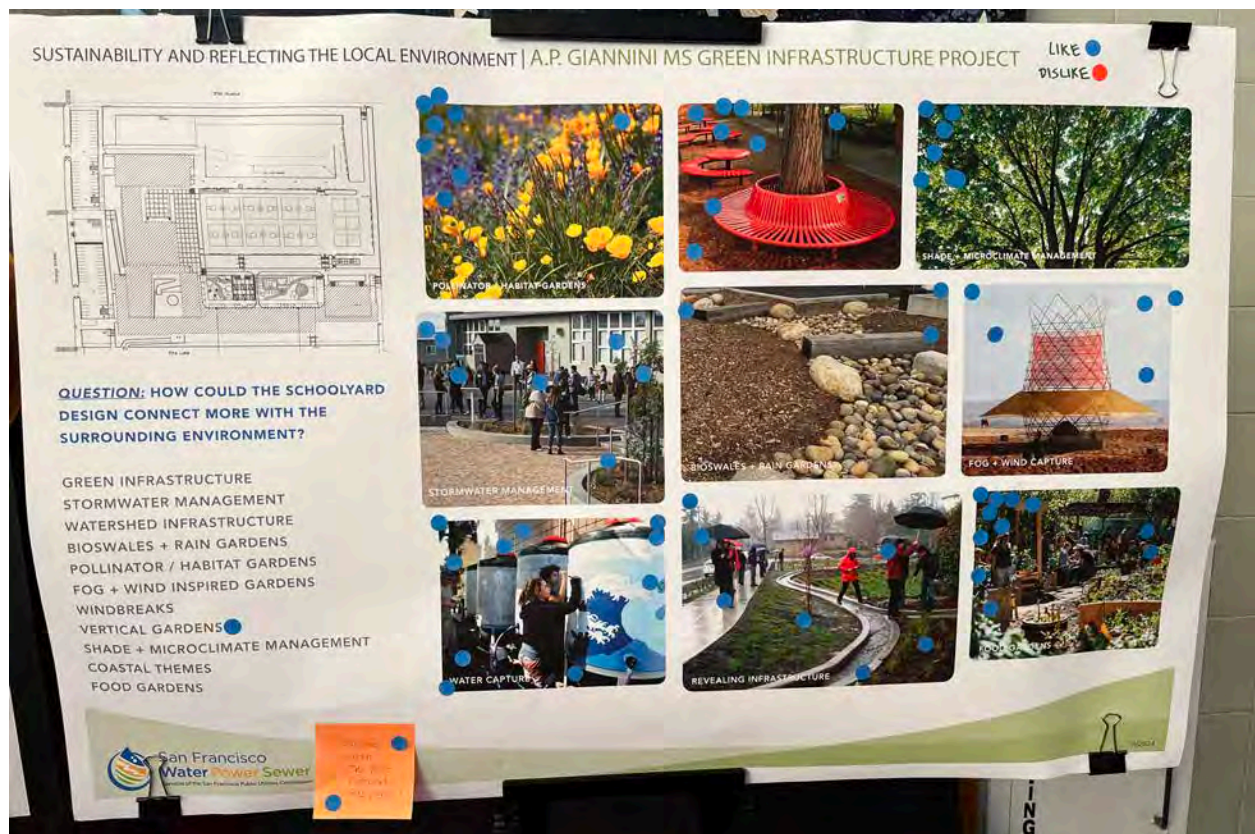
EXISTING CONDITIONS

- Better drainage in the yard and on the walkway above the garden in particular. This area is often called "Lake APG" on rainy days
- More permeable surfaces and less concrete was heard several times
- Need more ways to capture rainwater and prevent flooding
- More shade trees but also it's VERY windy on site
- Pollinator garden located northwest of the existing garden was just planted. A volunteer grandmother of a student comes every week to maintain and water
- Lack of seating in the current yard



INTERACTIVE LEARNING AND GATHERING SPACES

- There were several people that agreed there needs to be more available seating in the courtyard and would ideally like them arranged in clusters
- Flexible areas that can serve both groups and individuals was mentioned
- Outdoor learning as shown in the top row was very popular
- Creative edging and seating seemed to be exciting for people
- Free exploration during open play times was also discussed as something to consider in the design



SUSTAINABILITY AND REFLECTING THE LOCAL ENVIRONMENT

- The more natural the courtyard can be the better
- Pollinator planting, shade opportunities, and vertical gardens were of interest
- Creative ways of water capture seemed to be exciting to participants
- Seating in and around shade was highly desired
- Seemed to be an interest in interacting with water on site



ACTIVE PLAY

- Energetic play with lots of room to be active was highlighted
- Obstacle courses with varying terrain, ie up slopes was very popular
- Tennis tables and outdoor games also drew lots of attention
- The skate opportunities were highly desired by students but parents had concerns about this activity
- Ziplines were added as an option as was more exciting ground textures like bouncy materials
- A few people were interested in talking more about the soccer field but it didn't seem to be the biggest draw



COMMUNITY MEETING #1 SUMMARY

DATE OF EVENT: 11/12/2024

TIME: 6:30-8:00PM

ATTENDANCE:

Representatives from San Francisco Public Utilities Commission: Will Logsdon + Mary Tienken

Representatives from BASE Landscape Architecture: Patricia Algara + Hannah Greendorfer

Representative from Brown and Caldwell: Rosey Jencks

San Francisco Unified School District (SFUSD) – Parents + Administrators

Representatives from the AP Giannini Site Committee

MEETING GOALS:

To present the project and a summary of the engagement to date. To provide an opportunity for participants to share their ideas and hopes for the space. To gain feedback and validate the assumptions and ideas gathered throughout the engagement process thus far.

CONSIDERATIONS:

Overall, Community Meeting #1 successfully achieved meeting goals. The participants provided helpful feedback and validated the assumptions and ideas gathered throughout the engagement process thus far. However, it is important to note the representation at the meeting: the majority of the attendees were parents, along with a few school administrators. There were no teachers or students present, which presents an opportunity to engage with these critical stakeholder groups in future meetings to ensure their perspectives are incorporated into the process.

ATTACHMENTS:

PDF Export of MIRO Board Comments from Community (pg. 5-10)

PRESENTATION SUMMARY:

Introduction and Project Overview

Presenter: Will Logsdon (SFPUC)

- Objectives:
 - Introduce Green Infrastructure (GI) as a way to manage stormwater and adapt to increasing climate change impacts
 - Green Infrastructures role in reducing stormwater entering the sewer system, which is critical during major storm events
- Green Infrastructure Techniques:
 - Use of vegetation and permeable surfaces to capture and slow stormwater
 - GI can be integrated with recreational spaces in schoolyards: examples include rain gardens, permeable pavement, and other bioretention areas

- Encouragement of creative designs for stormwater capture that complement APG's existing and future uses, while acknowledging funding limitations for non-GI related amenities
- Context in SFUSD:
 - SFUSD properties have significant amounts of hardscape (asphalt, concrete) with minimal green spaces, which can look like industrial environments rather than enriching educational spaces
 - GI has been implemented in past SFUSD projects, such as Lafayette Elementary, where rain gardens and nature play, areas were introduced to be both functional and nice aesthetically
 - **The APG project marks the first SFPUC led capital project within SFUSD for green schoolyards, reflecting a milestone in the partnership and a template for future efforts**

Past Engagement Summary and Existing Conditions

Presenter: Patricia Algara (BASE Landscape Architecture)

- Community Engagement to Date:
 - Multiple site visits to APG for initial assessments
 - Engagements at Back to School Night and the Principal's Tea, where community members were introduced to the project and shared initial input
 - Meetings with the school's Site Committee, group of school staff, parents, and teachers
- Main Themes from Initial Engagements:
 - **Excessive Hardscape:** The schoolyard is dominated by hard surfaces, with minimal green space and several underutilized areas
 - **Limited Play Opportunities and Programming:** Large asphalt areas and an overabundance of basketball courts reduce space for diverse play and activities
 - **Lack of Shade:** Few natural or shaded areas exist, impacting comfort and usability for various activities

COMMUNITY FEEDBACK SUMMARY:

Feedback from Community Meeting

Method of Collecting Input: MIRO Board

Link to Board: https://miro.com/app/board/uXjVLJvNOOk= (also PDF attached to this summary pg. 5-9)

Presenter: Patricia (BASE Landscape Architecture)

Underutilized/ Challenging Spaces Identified

- **Lower Yard:**
 - Limited play opportunities and experiences, excess basketball courts
 - Insufficient seating and gathering areas
 - Too much asphalt

- Lack of shade and exposure
- **Lunch Area:**
 - Too much concrete
 - Insufficient shade and seating, reducing comfort for students
 - Overall uninviting space for groups
- **Long Jump Area:**
 - Uninviting and underutilized zone
 - Lack of shade
 - Minimal recreational value, singular recreational activity
- **Stage Area:**
 - Limited shade, reducing usability during sunny or hot weather days
 - Currently an underutilized with potential for planting
- **Slopes and Walkway ("Lake APG"):**
 - Frequent flooding disrupts pathways, garden areas, and courts
 - Poor stormwater management reduces accessibility and impacts usability

Programming

- **Recreation and Sport Courts:**
 - Strong desire for a soccer field, SFPUC in discussion with District about feasibility
 - Basketball courts are popular among students, though there are concerns about monopolization by older grades, leaving younger students with fewer options
 - Requests to diversify play opportunities other than basketball:
 - Volleyball on grass or non asphalt surfaces
 - Climbing and bouldering structures
 - Obstacle courses (maybe on slopes) for varied physical engagement
 - Flexible spaces for PE and mixed recreational activities using permeable and colorful surfaces
 - Suggestions for Special Education programming with inclusive play structures, soft surfaces and sensory activities like yoga, spinners, or quiet areas
 - Input to improve underutilized areas for sports like wall ball and reconsider the long jump area
 - Track becomes slippery when wet, causing falls, needs improvement for safety?
- **Gathering:**
 - Need for more seating areas with shade for eating and gathering at lunch area
 - Interest in creating shaded, intimate zones for small group interactions as well as larger groups, need for flexibility
 - Desire for less formal seating opportunities
 - Improve abandoned areas (e.g., old beehive zone) to make them inviting and safe for gathering/community spot
 -

Green Infrastructure

- **Stormwater Management:**
 - Excitement for adding permeable paving to reduce runoff and manage stormwater, especially in areas prone to flooding, such as "Lake APG"

- Interest in incorporating visual elements, like streams or other water infrastructure, into the design for educational and aesthetic value
- **Green Space Improvements:**
 - Increase the number of trees to provide shade for comfort and aesthetic
 - Create “green zones” for informal sports and multi-use activities
 - Replace hardscape with diverse planting areas, encourage native planting that is easier to maintain and environmentally friendly
 - Suggestions to use slopes for planted areas, flat spaces for flexible uses
 - Address neglected planting areas and restore dead or overgrown vegetation with new, irrigated plants

Feedback on Maintenance and Plant Durability

- Trampling and plant damage concerns, past issues noted with rain gardens being damaged at Lafayette Elementary due to heavy student use
- Mitigate plant damage included using logs, boulders, raised planters, and resilient plant species
- Raised planters and boulders may separate play and planted areas to ensure better plant survival and interaction with nature
- Trash management was discussed as an issue on site
- SFPUC will maintain stormwater assets (e.g., rain gardens, permeable surfaces) as part of their capital infrastructure responsibility

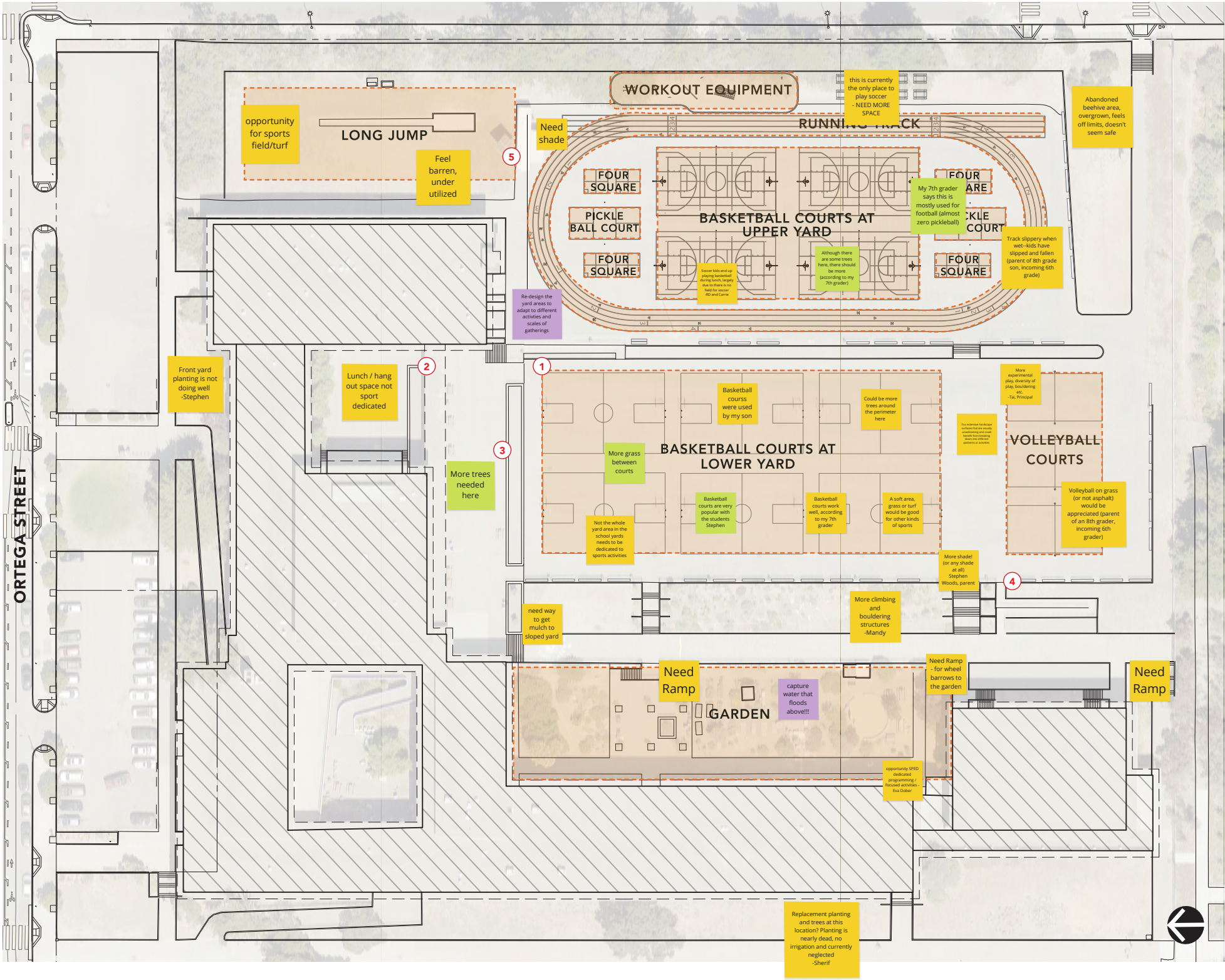
Additional Community Feedback and Questions

- Accessibility Requests:
 - Suggestion for an accessible ramp from the lower yard to the garden to facilitate easier transportation of materials/wheelbarrows for garden days
 - A need for SPED friendly or dedicated activities
- West Side of School Property:
 - Concerns about an area where mature trees were previously removed, potentially due to root intrusion and associated flooding issues
 - Community requested that this area be included in landscaping efforts, with added trees and plantings for both ecological and aesthetic improvement

NEXT STEPS / ACTION ITEMS:

- **Continued Feedback Collection:** Community members encouraged to visit website and follow project development, email with feedback, participate in future community meetings and engagement opportunities
- **Documenting Comments:** All feedback will be reviewed, including suggestions for green spaces, seating, play areas, programming needs, and shaded gathering spots
- **Student Engagement:** A plan will be developed to gather more specific feedback from students on their preferences for play and learning spaces

EXISTING CONDITIONS | A.P GIANNINI MS GREEN INFRASTRUCTURE PROJECT



#	EXISTING ACTIVITY
4	BASKETBALL COURTS AT UPPER YARD
6	BASKETBALL COURTS AT LOWER YARD
3	VOLLEY BALL COURTS
1	RUNNING TRACK
5	OUTDOOR WORKOUT EQUIPMENT
1	LONG JUMP
8	FOUR SQUARE COURTS
6	PICKLE BALL COURTS

1) WHAT AREAS OF THE CURRENT SCHOOLYARD WORKS WELL, AND WHAT AREAS DO YOU THINK NEED IMPROVEMENT?

Comment + School Affiliation

2) WHAT AREAS OF THE SCHOOLYARD DO STUDENTS AND STAFF SEEM TO ENJOY THE MOST, AND WHY?

Comment + School Affiliation

3) THIS IS A GREEN INFRASTRUCTURE PROJECT, WHAT OPPORTUNITIES DO YOU SEE FOR ENHANCING WATER MANAGEMENT, PLANTINGS, OR BIODIVERSITY IN THE SCHOOLYARD?

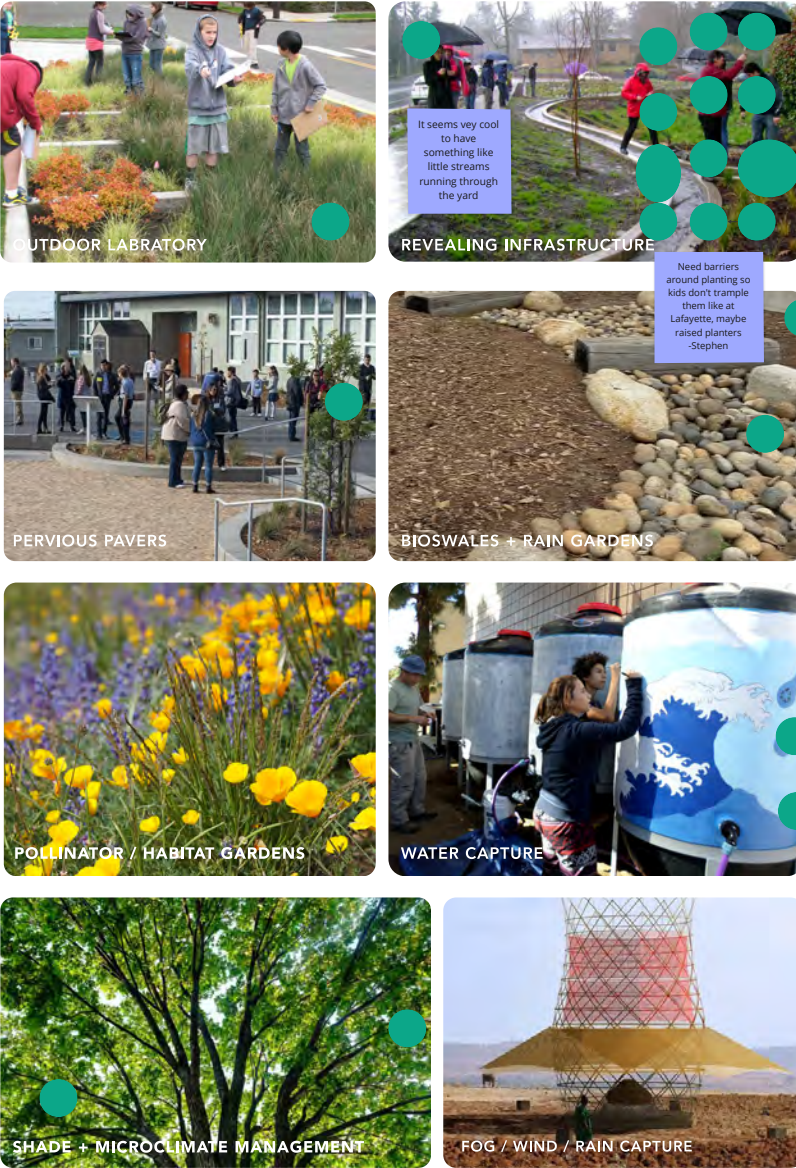
Comment + School Affiliation

PRECEDENTS | A.P GIANNINI MS GREEN INFRASTRUCTURE PROJECT

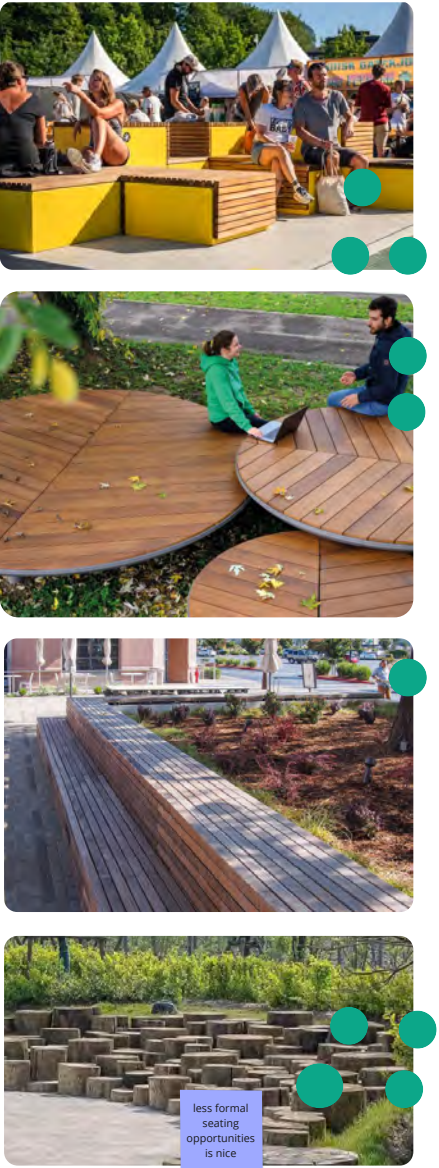
ACTIVE PLAY



GREEN INFRASTRUCTURE / STORMWATER MANAGEMENT

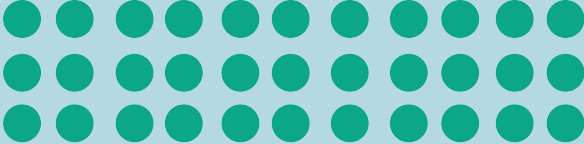


GATHERING + SEATING SPACES

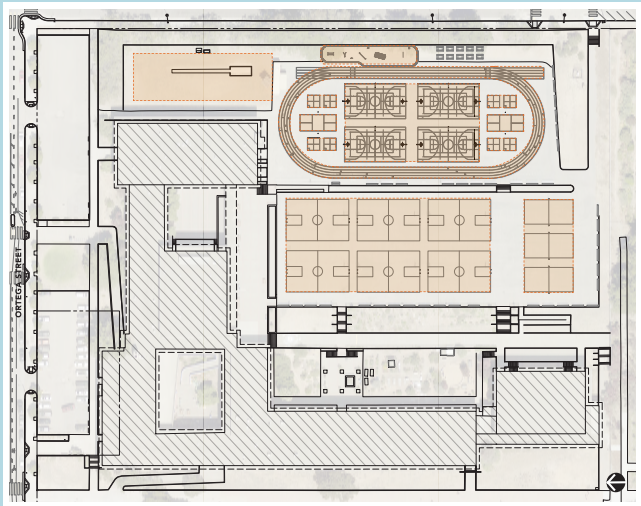


Discussion Questions (5 mins)

HIGHLY DESIRED

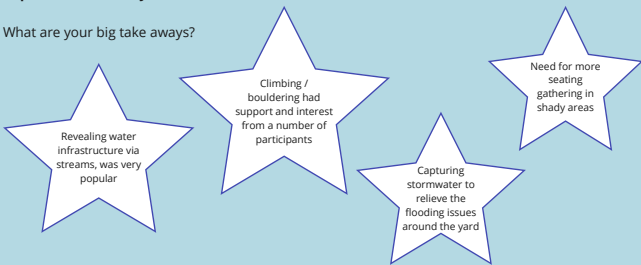


ADDITIONAL COMMENTS:

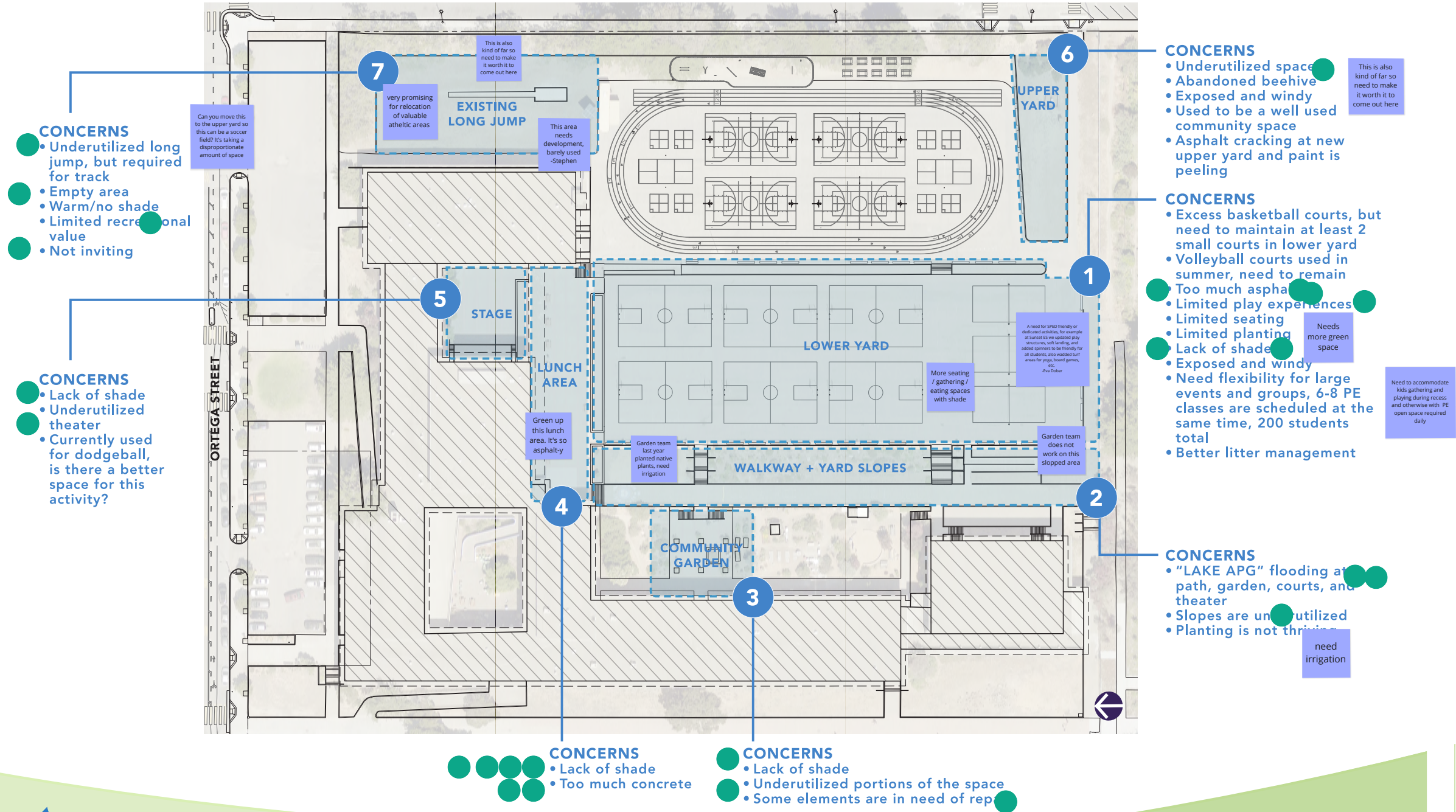


Report Out Summary

What are your big take aways?



WHAT WE'VE HEARD | A.P GIANNINI MS GREEN INFRASTRUCTURE PROJECT



Discussion Questions (5 mins)

HIGHLY DESIRED

ADDITIONAL COMMENTS:

Comment + School Affiliation

Comment + School Affiliation

Comment + School Affiliation

Comment + School Affiliation

Comment + School Affiliation

Comment + School Affiliation

Comment + School Affiliation

Comment + School Affiliation

Comment + School Affiliation

Comment + School Affiliation

Need for shade was echoed across the board

More focus on the larger student body and the diversity of needs in the yard

More seating / gathering / eating spaces with shade

The need for flexible space in addition to more diversity of play opportunities

Too much concrete, not enough green space

OPPORTUNITY AREAS | A.P. GIANNINI MS GREEN INFRASTRUCTURE PROJECT



Programming

- Energetic diversity of play experiences
- Activity tables
- Obstacle courses/activity walls
- Bouldering
- Soccer field (SFPUC/District in conversation about feasibility)
- Beginner pump tracks
- Free exploration / unimpeded open space in lower yard cooperative games
- Flexible space for events, groups and individuals

Better space
for wall ball
would be
great
-Stefanie

Green Infrastructure /
Stormwater Management

- Stormwater capture and infiltration system
- Bioretention / rain gardens
- Fog / wind inspired garden
- Multicultural garden
- Shade Trees
- Windbreaks

Very happy to see water capture and permeable paving

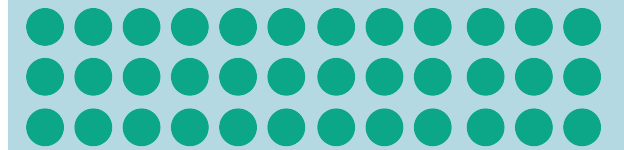
– OPPORTUNITIES

Programming

- Interactive play on slopes
- Educational garden

Green Infrastructure / Stormwater Management

- Expand pollinator / habitat garden
- Water retention
- Interaction with water captured on site
- Permeable paving
- Restore local context and coastal themes, i.e. dunes (sand infiltration)



Comment
+ School
Affiliation

Comment
+ School
Affiliation

Comment
+ School
Affiliation

Comment
+ School
Affiliation

Comment
+ School
Affiliation

Comment
+ School
Affiliation

Report Out Summary

What are your big take aways?

A lot of support
for water capture
and permeable
paving

Volleyball court at the lower yard is very much an opportunity zone as is the long jump pit, and lunch area

Questions from
group about
soccer field and
where it could be
located

Suggestions on how green space + shade trees might delineated intimate sitting spaces vs small group gatherings

Lower courtyard should act as a central flexible and activity zone

FUTURE ENGAGEMENTS | A.P GIANNINI MS GREEN INFRASTRUCTURE PROJECT

1.) WEBSITE TO LEARN MORE ABOUT THE PROJECT

- WEBSITE LINK: WWW.SFPUC.GOV/APGIANNINI
- EMAIL FOR PROJECT FEEDBACK: GIPROJECTS@SFWATER.ORG
- INTERACTIVE ONLINE MAP FOR ENGAGEMENT IN DEVELOPMENT

2.) STUDENT DESIGN CHARRETTE

3.) SITE COMMITTEE MEETINGS

4.) COMMUNITY MEETINGS



SUMMARY FOR SITE OBSERVATION, ENGAGEMENT WITH P.E TEACHERS AND STUDENTS AT A.P. GIANNINI MIDDLE SCHOOL

Meeting Date: Dec 4th 2024

Time: 12:30-5:00pm

Location: AP Giannini

Agenda for the day

12:30-2:30 - Yard Observations (*lunch runs from 12:13-12:53)

2:30-3:15 - PE Teacher Meeting

3:30-5:00 - Student Design Workshop

Yard Observations

Meeting Date: 12/4

Time: 12:30-2:30

Location: School Yard

Attendance:

Will Logsdon, San Francisco Public Utilities Commission, Urban Watershed Planning Division

Mary Tienken, San Francisco Public Utilities Commission

Erica Cruz, Brown and Caldwell

Patricia Algara, BASE Landscape Architecture

Hannah Greendorfer, BASE Landscape Architecture

Goals:

Observe how is the school yard is being utilized during lunch break.

Some questions to keep in mind:

What activities are happening? Where?

Are there any underutilized spaces?

Are there any overutilized spaces?

Are there any conflicting uses of space?

Are there enough seating areas?

Where could shade be incorporated?

Where are the teachers/staff?

How can the space be improved, better utilized?

Is the garden area being utilized during recess and how?

How is the yard used by other classes than PE?

Site Photos:





Notes:

- Approximately 1,100 students use the yard during lunch time
- Supervision requirements are one staff member per 100 students, so ideally 10 faculty members are needed during the lunch period
- Faculty members were primarily found standing in the few shady areas due to the sunny weather
- All sections of the yard are heavily used, with every grade having lunch at the same time (no staggering)
- **Active activities observed:** basketball, volleyball, lots of small groups throwing the football and soccer games happening on basketball courts, many students perched on workout equipment

- *Passive activities observed: sitting at lunch tables (all tables were full), sitting along concrete slopes, walking and talking with friends around the track (primarily girls), sitting on asphalt with backpacks, and playing games at lunch tables*
- *The long jump area and garden are off limits during lunch time*
- *Older students tend to dominate main activities, leaving younger students with fewer areas and options*
- *A small snack shack sells items to students (run by student clubs)*
- *Safety hazards - uneven surfaces at lower yard, slippery lower yard concrete (lots of accidents happen), and slippery upper yard paint*
- *Field and court conditions need to be reconsidered to support a wider variety of activities, students are not using all the courts but are using the flexibility for other activities*
- *There is no shade except along the perimeter near the volleyball courts*
- *The yard is loud, with no clearly defined quiet areas*
- *The amphitheater area is used for dodgeball and wall ball during lunch, but also used by the drama teacher*
- *Some active activities spill into the lunch eating areas*

PE Teacher Meeting

Meeting Date: 12/4

Location: School Yard

We observed PE during 5th and 6th periods.

Time: 2:30-3:15

Attendance:

Will Logsdon, San Francisco Public Utilities Commission, Urban Watershed Planning Division

Mary Tienken, San Francisco Public Utilities Commission

Erica Cruz, Brown and Caldwell

Patricia Algara, BASE Landscape Architecture

Hannah Greendorfer, BASE Landscape Architecture

Jason Blum, APG PE teacher

Chris Cheng, APG PE teacher

Emma Elting-Blickenstaff, APG PE teacher

Mike Beitiks, APG PE teacher

Carlos Alfaro, APG PE teacher, Athletic Director

John Deppmeier, APG PE teacher

Savannah Lykins, APG PE teacher

Hudson Szeto, APG PE teacher

Goals:

Understand the programmatic and spatial needs that PE has.

Determine if PE has sufficient space and if they would be able to function with a reallocation of some space towards green infrastructure. If so where would be the best areas for this.

Some questions that were ask:

Is there anything missing in the space?

Are there any underutilized spaces?

Are there any areas that are not working?

Are there any areas that can be improved?

Are there enough – Basketball courts? Volleyball Courts? Running track? Long jump?

What would make it easier to teach PE?

How is the yard used by other classes than PE?

Site Photos:





Notes:

Activities that require hard surface (specific lines/boundaries):

- Bikes
- Ripstiks
- Basketball
- Pickleball
- Tennis
- Volleyball
- Floor Hockey
- Team Handball
- Four Square
- Track

Activities that could benefit from a softer surface (or larger space):

- Football
- Soccer
- Lacrosse

Activities that can happen in a versatile space:

- Dance
- Yoga
- Workout circuits
- Boxing
- Park Games

Unrelated to yard (inside?):

- Ropes
- Badminton

General:

- PE sessions always begin with students running laps
- For PE periods, students are divided in six small groups of approximately 28 students, each require enough space for activities to happen independently
- Workout Wednesday activities use less equipment compared to other days
- All sixth graders are in same period for PE, followed by combined periods for seventh and eighth grade classes
- PE activities occupy most of the yard, raising concerns about limiting its use for other purposes
- The neighboring grass field can be used by APG but is often off limits due to maintenance or contractual restrictions limiting use to 30 students at a time (this is the PE instructors favorite place to take students)
- PE staff are concerned about trees or vertical elements in the middle of the play field impeding flexible use
- Staff don't like the idea of barriers dividing the field, want to maintain flexibility and open space
- Surfacing must be smooth and even for safety
- Recently installed upper yard surfacing is slippery and poorly installed, staff concerned about contractors reliability for future project, want to know timeline
- Lower yard surfaces are uneven, unsafe, and very slippery (sometimes will not have kids run on this area)
- There is an existing seating area with benches near the locker rooms for students to gather before heading to class, that space is a bit underutilized
- Shaded or sheltered areas are needed along the yard perimeter for students taking breaks
- Staff would like to bring back the bike program but conflicts with other activities, ie bikes on the track interfere with basketball games due to rolling balls causing safety issues
- Volleyball has strong student interest, with many signing up this year. Girls were seen using the volleyball courts during lunch time.
- The long jump is used but only after hours and during track season
- There is interest in exploring cross training options for runners
- Some PE instructors prefer a full-size soccer field, while others are open to a smaller field suitable for 11–13 year olds
- Using Street Soccer USA was suggested
- Each student group needs an area equivalent to two full basketball courts
- Equipment is rolled out daily based on planned PE activities

- *Program circulation could be reconsidered to better align with varying outdoor PE classroom sizes*

Student Design Workshop

Meeting Date: 12/4

Location: Beacon Office, Room 130

Time: 3:30 – 5:00 (after school 90 mins)

Group Size: 7 Students, 1 Teacher

Attendance:

Will Logsdon, San Francisco Public Utilities Commission, Urban Watershed Planning Division

Erica Cruz, Brown and Caldwell

Patricia Algara, BASE Landscape Architecture

Hannah Greendorfer, BASE Landscape Architecture

Seven (7) students from the Beacon after school program

Goals:

Introduce the team and the project

Quick introduction to the design process

Provide materials for design charrette with students. Students will be able to explore the yard at scale and express their desired program on the space with different tools provided during the design charrette.

Materials provided:

- Power point presentation
- Scaled site plan
- Scaled kit of parts
- Engineering Scales
- Trace paper
- Markers
- Glue
- Scissors

10 min – Intro, team presentation, project description – Will

10 min – Design thinking presentation – Patricia

40 min – Students working in a small group – Facilitators Patricia/ Hannah

Go into breakout groups (ideally no more than 4 students per group)

Student's will create designs in small break out groups

Facilitator to take notes of the common themes emerging.

Select a person to share back with the larger group all the ideas and the common themes.

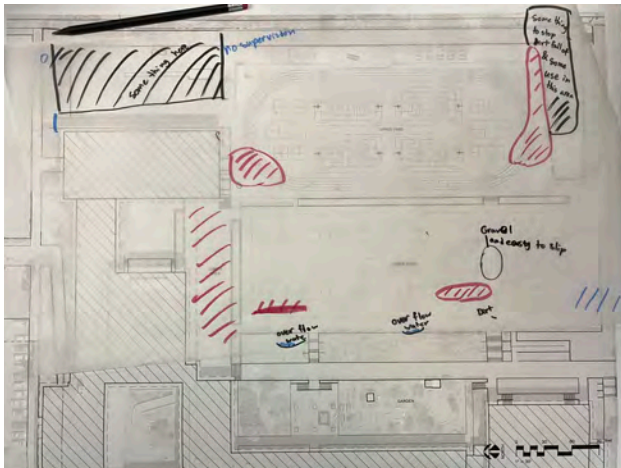
15 min – Share back with the larger group the designs

Facilitators to share the common themes that emerged

5 min – Do a brief summary of the top themes that emerged from the groups.

Questions and Next Steps – Patricia

Site Photos:



- *There is a lot of empty dirt around the long jump area, which is also where students enter the yard in the morning, not inviting*
- *"Early bird" students enter the yard via the ramp through the main office*
- *Awkward slopes and rough materials at the amphitheater stage area lead to frequent falls especially during active play*
- *Many clubs set up booths near the entrance of the yard, close to the red tile room (snack shacks...)*
- *Students often climb bars along ramps and stairs, unsafe*
- *Supervising adults typically congregate in the lower yard corner near the lunch tables or in shade*
- *Occasionally, yellowjackets nest in planted slopes*
- *The walkway often floods, nicknamed "Lake APG," suggested a need for trench drains*
- *There are too many basketball courts, reducing how many was suggested*
- *The volleyball courts need to be redone, uneven and slippery surfaces*
- *There is a need for more seating between courts and more green space*
- *The lower yard has an empty dirt field at the lower corner near the ramp that could benefit from added shade*
- *There is only one ramp between levels, and it is very long and steep*
- *The beehive area is underutilized, often empty, and has lots of broken glass near the back entrance*
- *There are frequent injuries on the workout equipment wall*
- *Dirt often falls from the beehive slope onto the upper yard, requiring a solution to prevent erosion*
- *Loose gravel on the lower yard creates slipping hazards*
- *There is noticeable pooling and water overflow in the lower yard*
- *Shade is needed in the lunch area*
- *Consider incorporating bouldering elements into the long jump area*
- *Maybe table tennis at beehive area with wind buffer (concerned that it is too windy for the small light ball to be able to play)*



SFPUC Giannini Green Infrastructure Project

Site Committee #3

20250123-Zoom Meeting

Objectives

- Confirm that the massing diagrams reflects the priorities of the school community
- Provide forum for big picture feedback
- Determine upcoming engagement opportunities

Attendees

Name	Affiliation	Role
Tai-Sun Schoeman	San Francisco Unified School District (SFUSD)	Principal
Angie Sibelman	SFUSD	Science Teacher
Jason Blum	SFUSD	PE Coordinator
Heidi Smoot	SFUSD	Assistant Principal
Mary Tienken	San Francisco Public Utility Commission (SFPUC)	Project Manager
Wills Logsdon	SFPUC	Contract Manager
Sarah Bloom	SFPUC	Contract Manager
Rosey Jencks	Brown and Caldwell (BC)	Subject Matter Expert
Hans Tremmel	BC	Project Manager
Patricia Algara	Base Landscape Architecture (BASE)	Project Manager
Hannah Greendorfer	BASE	Landscape Archetict

Summary

Jason

- Thought the early concepts reflected a good snapshot of what PE was communicating
- Positive overall but recommends reviewing the design with other PE teachers and the department

Heidi

- Very much likes the expanded community zone
- Concerned about the entrance/volleyball area, works well during lunch but may be too disruptive to nearby classrooms, worried about a ball flying toward a window

Angie

- Shares similar concerns about disruption and noise at the volleyball area
- Suggests reducing to one court to create a quieter, more communal and welcoming space
- Recommends taking advantage of the shaded entrance area as a spot to “escape the chaos”

Tai

- Feels there is a nice balance of student needs and PE programming
- Proposes adding seating along pathway retaining walls and leveling the planters
- Notes that over time, soil from planters clogs the drains
- Recommends fixing all drains along the walk
- Likes that the soccer area is separated from seating for safety but emphasizes maintaining a clear path of travel

Discussion

A presentation of the current understanding of the usecases and introduce possible solutions.

Massing of Space Discussion

KEY INSIGHTS FROM ENGAGEMENT GATHERED | A.P. GIANNINI MS GREEN INFRASTRUCTURE PROJECT

General Yard Observations

- The yard is heavily used, with approximately 1,100 students during lunch
- No shade available
- Limited seating options
- Lunch tables are multi-use and full during lunch
- The yard is loud, with no defined quiet areas
- Limited green space
- Overcrowding and dominance of older and male students leave younger and female students with fewer options

Safety Hazards:

- Slippery surfaces in the lower and upper yard
- Uneven surfaces and loose gravel in the lower yard cause frequent falls
- Volleyball courts are uneven and workout equipment is hazardous

Programming:

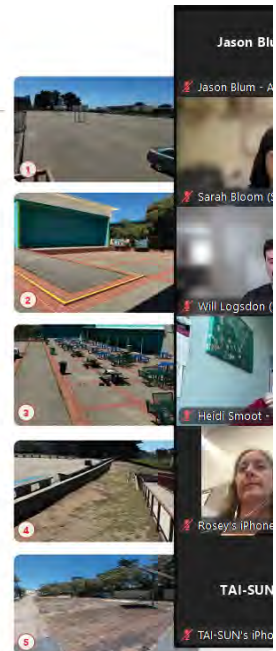
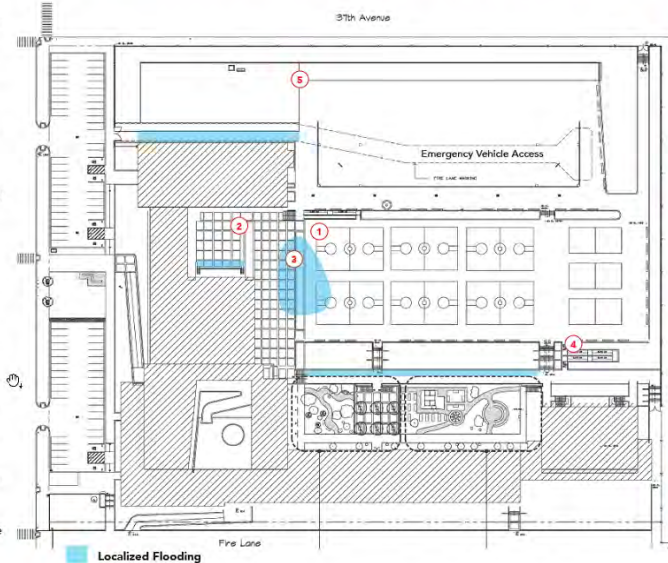
- Too many basketball courts, no diversity of play
- PE needs 6 separate areas for class, each approx. the size of 2 basketball courts
- Activities that can happen in a flexible spaces: Dance, Yoga, Workout Circuits, Park Games
- Activities that require hardscape: Bikes, Ripsticks, Basketball, Pickleball, Tennis, Handball, Floor Hockey, Four Square, Track
- PE staff prefer open, flexible spaces without barriers to accommodate various activities
- Interest in softer surfaces for football, soccer, and lacrosse
- Interest in bringing in cross training and the bike program back, but conflicts with other activities pose challenges
- Creative elements like bouldering and table tennis have been suggested

Flooding Issues

- Pooling water along the walkway ("Lake APG"), the lower yard, lunch area, and near the long jump

Accessibility

- A single, long, and steep ramp between levels restricts accessibility
- The current yard equipment storage arrangement leads to crowding at lunch



Key Insights

Questions

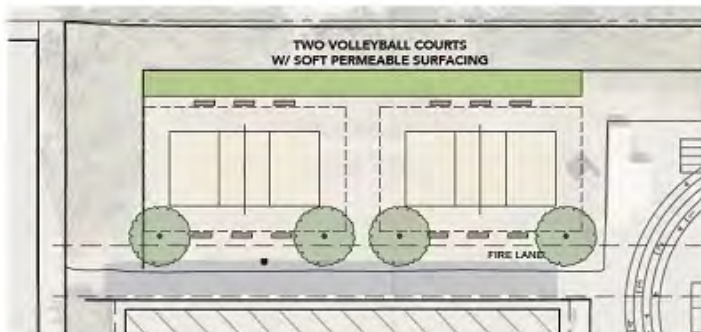
Generally, poised to the meeting whether we are aligned with the schools needs.

Heidi likes the expanded community zone and plan generally. Mainly concerned at Space #7, perhaps will not be used during class time. May not be used for PE.

Angie, generally likes the options. Space #7 gets a lot of shade.

Jason, likes the plan, but would like to get input from the other PE teachers.

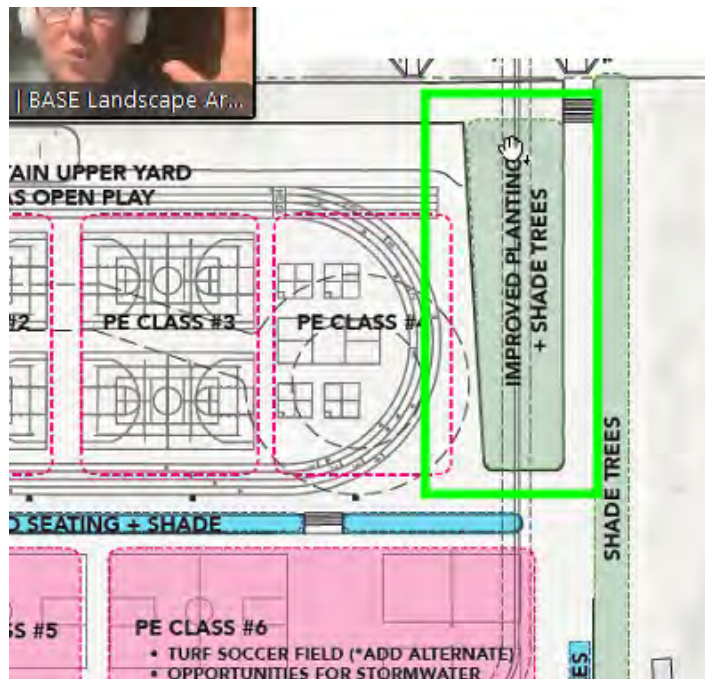
Heidi likes this configuration more with sound breaks due to the trees and generally, volleyballs unlikely to strike the windows.



Heidi likes this configuration more.

Tai-Sun, not accessible due to retaining walls and railing. Would like to see the retaining wall fixed, acknowledges that it's not possible for this project. Mary, posits that retaining wall scope is not possible as it does not meet the stormwater management objective.

Heidi, brought focus to the upper yard. Patricia proposes shade, no hiding opportunities, plantings, beautification. Heidi seems satisfied with this approach.



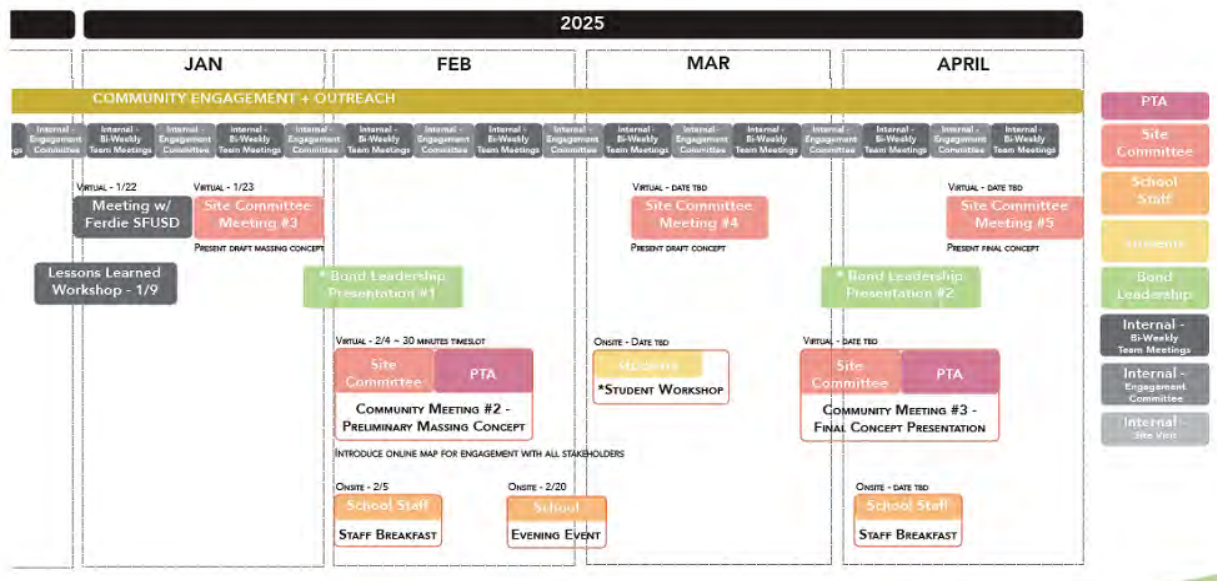
Area with proposed planting

Jason and Tai-Sun, is satisfied with the U10 soccer field. Encourages the soccer field to be further from the seating area. Tai-Sun confirms that soccer would be played regardless of enhanced seating.

- Is there any opportunities for more student engagement?

Heidi, recommend bringing information for display during lunch.

Schedule



Proposed Schedule

Action Items

- Next meetings PTA provided teacher breakfast 2/5, evening school event 2/20.
- Patricia to provide the slide deck to PE for circulations.
- Hans to coordinate use of web survey.
- PE to review slides and provide comments/input.



SUMMARY FOR PTA COMMUNITY MEETING 2

Meeting Date: Feb 4th 2025

Time: 7:00 - 7:30pm (30 minutes)

Location: Virtual

Number of Participants: ~ 30 people

AGENDA

SFPUC Welcome + Intro (5 minutes)

BASE Presentation of Massing Concepts (10 minutes)

-Summary of Engagement + Insights

-Massing of Space Discussion

-Initial Concept Ideas for Key Areas

Questions + Feedback (10 minutes)

Wrap Up + Next Steps (5 minutes)

IN ATTENDANCE

Admin, Parents, and Teachers:

Mandy	Linda Tsang	Michelle Chan
Emma	Karen Hadary	Hayley
Janet Wong	Alvin Li	Samuli Kekki
Susan (MW)	Tai Schooman	Julie
Jonathan Crosby	Beth Ryan	Jennie Chang
Nancy Cogan	Allison Dean	Katherine Burton
Carly Chillmon	Jen Bhalla	Ibone Santiago
Jen Bhalla	Cat Sommer	Leigh Meredith
Katherine Burton	Daniela	

Project Team:

Sarah Bloom, SPPUC Wastewater

Will Logsdon, SFPUC Wastewater

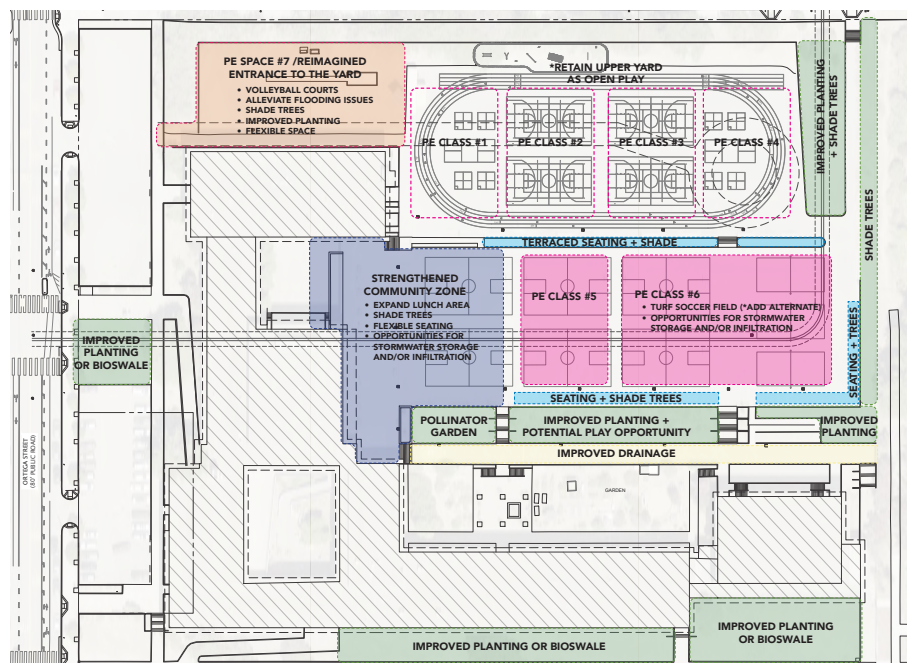
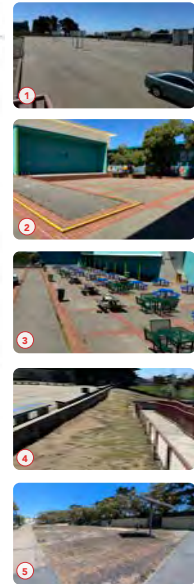
Hans Tremmel, Brown and Caldwell

Patricia Algara, BASE Landscape Architecture

Hannah Greendorfer, BASE Landscape Architecture

NOTES FROM PARTICIPANTS + PRESENTATION SLIDES BOARDS

- A parent suggested installing a large net (like those at SI High School) around the soccer field to prevent balls from flying out
- Concerns were raised that play balls currently cause problems for both students and teachers
- A participant asked why AP Giannini was chosen over other middle schools, given its already high desirability as a school - AP Giannini was selected due to its sandy soil, ideal for stormwater management, and its large yard acreage making it a strong candidate for a PUC led capital project
- A parent questioned whether the existing garden area had been considered for stormwater capture, noting it already absorbs water well but could be updated
- The garden it is not accessible during recess and lunch due to supervision issues, limiting its usability as a student gathering space
- A parent asked whether seating would be available near the new volleyball courts, confirmed that seating is a part of redesign, with a mix of benches and round seating areas
- A concern was raised about water pooling and flooding in the upper parking lot during heavy rains - BASE acknowledged this as a good opportunity for a bioswale or other stormwater solution, though it was unclear if it was currently within the project's scope
- A participant asked about timeline and student access during construction - the project is still in the conceptual design phase, with construction not expected until summer 2027 after final design, permitting, and bidding
- Additional opportunities for feedback:
 - **February 20th** – Community engagement during the Newsies musical event, where project boards will be displayed
 - **QR Code / Interactive Map** – A digital tool will be available for community members to provide further comments
- The final concept design will be refined based on feedback before another presentation to the community



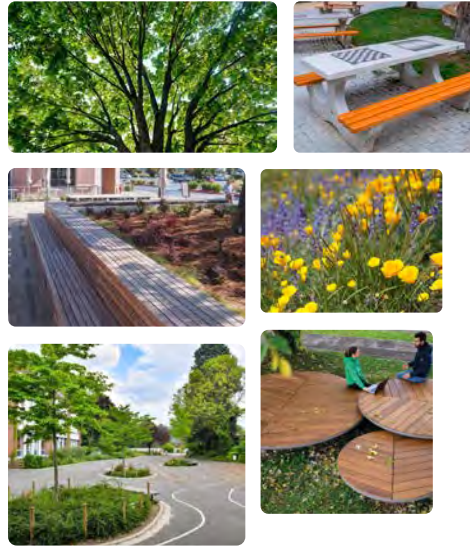
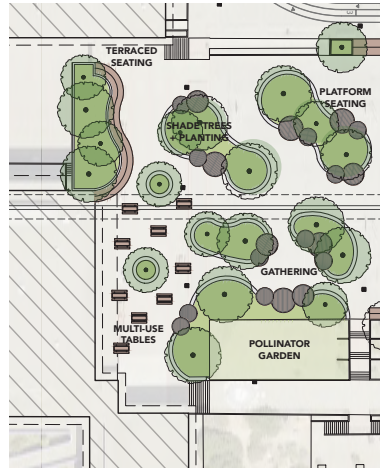
SCHOOLYARD MASSING CONCEPT | A.P. GIANNINI MS GREEN INFRASTRUCTURE PROJECT

STRENGTHENED COMMUNITY ZONE

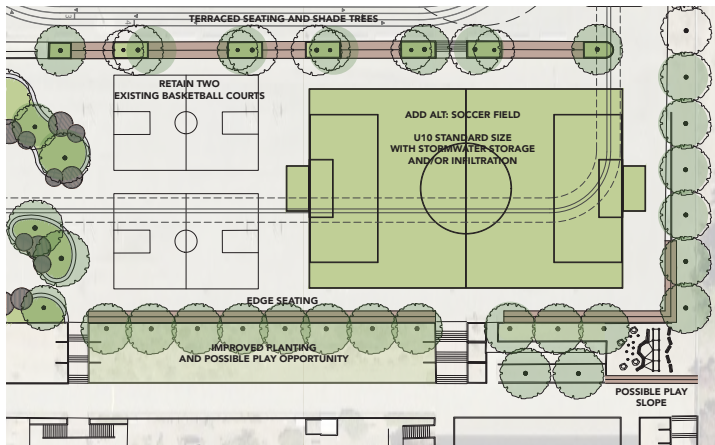
- EXPAND LUNCH + COMMUNITY AREA
- PROVIDE SHADE TREES
- FLEXIBLE SEATING
- OPPORTUNITIES FOR STORMWATER STORAGE AND/OR INFILTRATION
- DIVERSIFY SOCIAL SPACES FOR GATHERING + ANNOUNCEMENTS
- PLANTERS WITH SEAT EDGE
- ENHANCE ALREADY ESTABLISHED POLLINATOR GARDEN



EXISTING SITE PHOTOS



SCHOOLYARD MASSING CONCEPT | A.P. GIANNINI MS GREEN INFRASTRUCTURE PROJECT



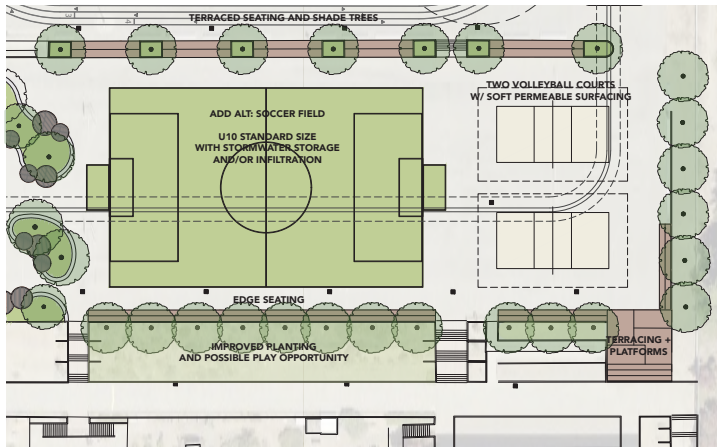
LOWER YARD IMPROVEMENTS: MASSING OPTION 1

- PROPOSED TURF SOCCER FIELD W/ STORMWATER STORAGE AND/OR INFILTRATION
- MAINTAIN TWO EXISTING BASKETBALL COURTS
- BREAK DOWN EXISTING SLOPE FOR TERRACED SEATING AND SHADE TREES
- EDGE SEATING
- IMPROVED PLANTING, DROUGHT TOLERANT, DURABLE SPECIES
- POTENTIAL PLAY OPPORTUNITY ON EXISTING SLOPE, SUCH AS ROPES OR OBSTACLES



1/2025

SCHOOLYARD MASSING CONCEPT | A.P. GIANNINI MS GREEN INFRASTRUCTURE PROJECT



LOWER YARD IMPROVEMENTS: MASSING OPTION 2

- PROPOSED TURF SOCCER FIELD W/ STORMWATER STORAGE AND/OR INFILTRATION
- MAINTAIN TWO VOLLEYBALL COURTS W/ SOFT PERMEABLE SURFACING
- CLEAR WALK BETWEEN LOWER YARD AND UPPER YARD
- BREAK DOWN EXISTING SLOPE FOR TERRACED SEATING AND SHADE TREES
- EDGE SEATING
- IMPROVED PLANTING, DROUGHT TOLERANT, DURABLE SPECIES
- POTENTIAL PLAY OPPORTUNITY ON EXISTING SLOPE, SUCH AS ROPES OR OBSTACLES



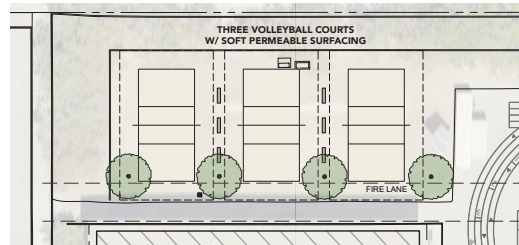
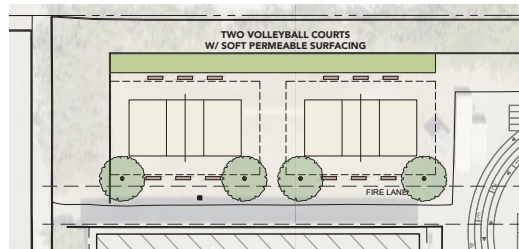
SCHOOLYARD MASSING CONCEPT | A.P. GIANNINI MS GREEN INFRASTRUCTURE PROJECT

RE-IMAGINED ENTRANCE TO THE YARD

- RELOCATED VOLLEYBALL COURTS
- WELCOMING ENTRANCE TO THE YARD
- SEATING AND SHADE
- BIORETENTION PLANTERS
- ALLEVIATE FLOODING ISSUES



EXISTING SITE PHOTOS



1/2025

RE-IMAGINED ENTRANCE TO THE YARD

FLEXIBLE SPACE / COURTS

STRENGTHENED COMMUNITY ZONE

POLLINATOR GARDEN

IMPROVED PLANTING OR BIOSWALE

UPPER YARD

TERRACED SEATING EDGE + SHADE TREES

ADD ALLIANCE FIELD WITH STANDARD SIZE WITH STORAGE AND/OR INFILTRATION

SEAT EDGE + SHADE TREES

IMPROVED PLANTING

PLAY SLOPES

IMPROVED PLANTING OR BIOSWALE

1st Street

2nd Street

3rd Street

4th Street

5th Street

6th Street

7th Street

8th Street

9th Street

10th Street

11th Street

12th Street

13th Street

14th Street

15th Street

16th Street

17th Street

18th Street

19th Street

20th Street

21st Street

22nd Street

23rd Street

24th Street

25th Street

26th Street

27th Street

28th Street

29th Street

30th Street

31st Street

32nd Street

33rd Street

34th Street

35th Street

36th Street

37th Street

38th Street

39th Street

40th Street

41st Street

42nd Street

43rd Street

44th Street

45th Street

46th Street

47th Street

48th Street

49th Street

50th Street

51st Street

52nd Street

53rd Street

54th Street

55th Street

56th Street

57th Street

58th Street

59th Street

60th Street

61st Street

62nd Street

63rd Street

64th Street

65th Street

66th Street

67th Street

68th Street

69th Street

70th Street

71st Street

72nd Street

73rd Street

74th Street

75th Street

76th Street

77th Street

78th Street

79th Street

80th Street

81st Street

82nd Street

83rd Street

84th Street

85th Street

86th Street

87th Street

88th Street

89th Street

90th Street

91st Street

92nd Street

93rd Street

94th Street

95th Street

96th Street

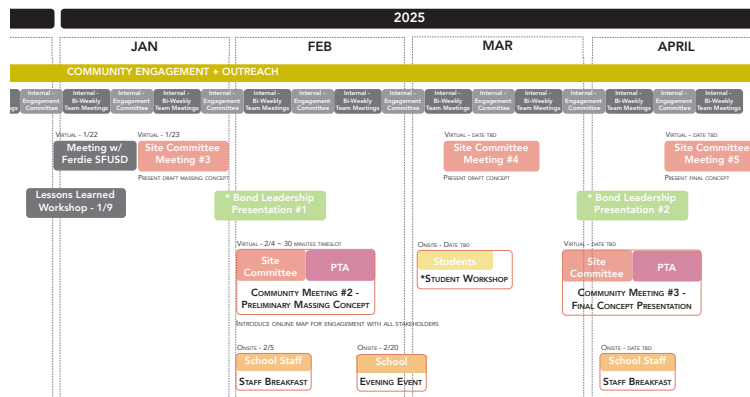
97th Street

98th Street

99th Street

100th Street

1. WHAT ARE YOUR INITIAL REACTIONS TO THE OVERALL LAYOUT AND ORGANIZATION OF THE SPACE?
2. DOES THE MASSING DIAGRAM REFLECT THE PRIORITIES AND NEEDS IDENTIFIED IN EARLIER MEETINGS?
3. DO THE PROPOSED GATHERING AREAS, PLAY ZONES, AND PASSIVE VS. ACTIVE DESIGNATIONS MEET SCHOOL'S NEEDS?
4. FOLLOW UP CONVERSATIONS
 - PTA PROVIDED TEACHER BREAKFAST 2/5
 - STUDENT LUNCH TIME TABLING 2/7
 - EVENING SCHOOL EVENT 2/20





SUMMARY FOR TEACHERS BREAKFAST AT A.P. GIANNINI MIDDLE SCHOOL

Teachers Breakfast Engagement

Meeting Date: February 5th 2025

Time: 8:30-9:30am

Location: AP Giannini

*Number of Participants: ~ 35 (admin
and teachers)*

Project Team in Attendance:

Will Logsdon, San Francisco Public Utilities Commission, Urban Watershed Planning Division

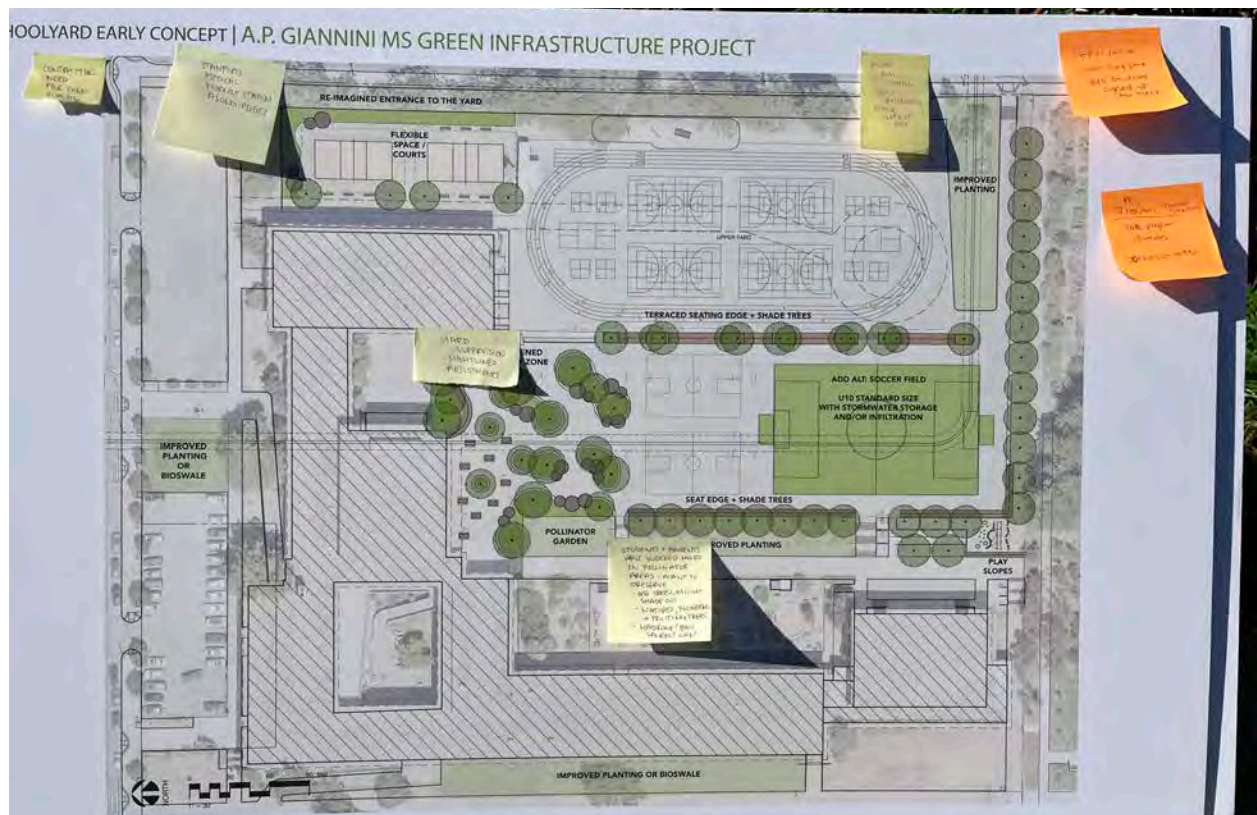
Patricia Algara, BASE Landscape Architecture

Hannah Greendorfer, BASE Landscape Architecture

NOTES FROM PARTICIPANTS + BOARDS

- Overall excitement for the initial concept ideas, like the additional shade, the strengthened community zone, play slopes, and creative seating (platforms, planter edge seating, multiuse play tables, and log steppers)
- Pollinator Garden Club - Students and parent volunteers have invested significant effort into the existing pollinator gardens and would like to see these areas preserved and enhanced with specific species, they meet 1st Sunday of every month
 - Shade Tree: Garden coordinator suggested reducing the number of shade trees in the middle planter to prevent excessive shading of certain plants,
 - Would like to see more flowering and fruiting natives
 - Prefers native shade trees such as madrone, bay laurel, and oak as potential shade tree options to complement the existing garden
 - They mentioned a couple things that would support the garden: irrigation, access to mulch. Sometimes they have to lay down boards from the lower garden and wheel mulch up or carry it in buckets up the stairs
 - The CA Native Pollinator group has planted over 100 plants so far, all with value to various pollinators or birds and with a particular focus on host plants for Lepidoptera
 - **Planting list of existing plants is archived by the design team**
- Important to keep the long jump, over 250 students sign up for track each year

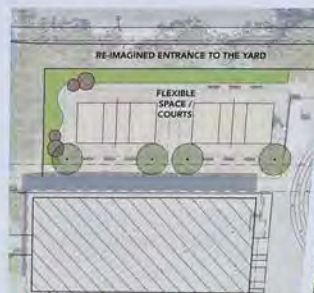
- Bike program is approx. 14 weeks, 30 students on bikes at a time
- Would like to be able to circulate the site for the bike program on a traditional round track
- Need to be mindful of sightlines through planters and where yard duty supervisors could stand during lunch
- Several teachers commented that they loved the play slopes and could be a fun way to circulate the site (just make sure that it is ropes, etc. aimed for middle schoolers)
- More wall ball opportunities, maybe along back side of site?
- Concern for the quality of the contractor during construction
- The science teacher loves the idea of having more pollinator areas of the yard for nature walks and lessons
- There is strong enthusiasm for the proposed terraced seating between the upper and lower yard - PE teachers requested seating on the upper yard side as well, so that it can be utilized by PE classes



SCHOOLYARD EARLY CONCEPT ENLARGEMENTS | A.P. GIANNINI MS GREEN INFRASTRUCTURE PROJECT



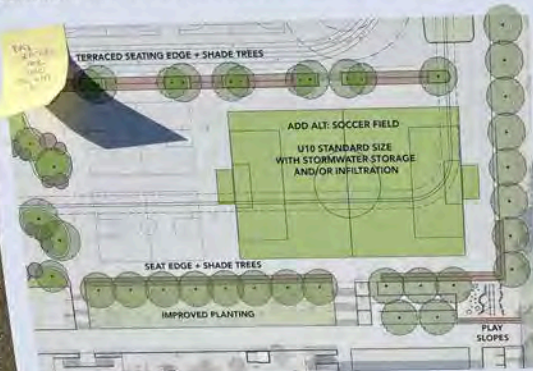
- STRENGTHENED COMMUNITY ZONE**
- EXPAND LUNCH + COMM. AREA
 - PROVIDE SHADE TREES
 - FLEXIBLE SEATING
 - OPPORTUNITIES FOR STORMWATER STORAGE AND/OR INFILTRATION
 - DIVERSIFY SOCIAL SPACES FOR GATHERING + ANNOUNCEMENTS
 - PLANTERS WITH SEAT EDGE
 - ENHANCE ALREADY ESTABLISHED POLLINATOR GARDEN



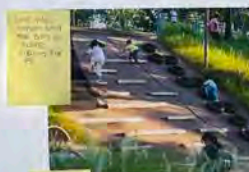
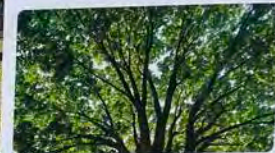
- RE-IMAGINED ENTRANCE TO THE YARD**
- RELOCATED VOLLEYBALL COURTS
 - WELCOMING ENTRANCE TO THE YARD
 - SEATING AND SHADE
 - BIORETENTION PLANTERS
 - ALLEVIATE FLOODING ISSUES



SCHOOLYARD EARLY CONCEPT ENLARGEMENTS | A.P. GIANNINI MS GREEN INFRASTRUCTURE PROJECT



- LOWER YARD IMPROVEMENTS**
- PROPOSED TURF SOCCER FIELD W/ STORMWATER STORAGE AND/OR INFILTRATION
 - MAINTAIN TWO EXISTING BASKETBALL COURTS
 - BREAK DOWN EXISTING SLOPE FOR TERRACED SEATING AND SHADE TREES
 - EDGE SEATING
 - IMPROVED PLANTING, DROUGHT TOLERANT, DURABLE SPECIES
 - POTENTIAL PLAY OPPORTUNITY ON EXISTING SLOPE, SUCH AS ROPES OR OBSTACLES







SUMMARY FOR STUDENT LUNCH ENGAGEMENT AT A.P. GIANNINI MIDDLE SCHOOL

Lunch Time Student Engagement

Meeting Date: February 7th 2025

Time: 12:30-1:30pm

Location: AP Giannini

Number of Participants: ~ 50 Students

Project Team in Attendance:

Will Logsdon, San Francisco Public Utilities Commission, Urban Watershed Planning Division

Sarah Bloom, San Francisco Public Utilities Commission, Urban Watershed Planning Division

NOTES FROM PARTICIPANTS + BOARDS

Overall Site Plan Board:

- Note from Tai – PE teachers would like to keep the long jump. Consider if it can be re-located to the south of the existing play structure in the upper yard.
- Less basketball courts
- Better basketball courts
- Redo ground at volleyball court
- Remove old pavement - hurts when falling
- Adjustable poles at volleyball courts
- Swing area
- Less pavement
- More gardens (2x)
- More grass area
- Like the soccer field (3x)
- More trees and shade (2x)
- Space to eat in the shade
- Like the new seating
- More seating in upper yard
- More spaces to eat and more activity areas
- Ponding issues at stage – this area is underutilized
- Pollinator garden should move away from people where they are eating
- I like the project
- "Pretty good"

- Add a lake?
- Pool 2x

Artificial Turf Focus Board:

- Like the play slopes (9x)
- Love the soccer and turf (3x)
- More trees and shade (3x)
- Shaded seating (2x)
- More play structures (3x)
- Not all basketball courts are used
- Potential for benches between courts?
- Existing pollinator garden should remain
- Like the existing play structure
- Current play structures aren't that fun
- Ground is really rough
- Drainage problems in walkway below middle yard
- Slide, swings, and monkey bars
- Swing set

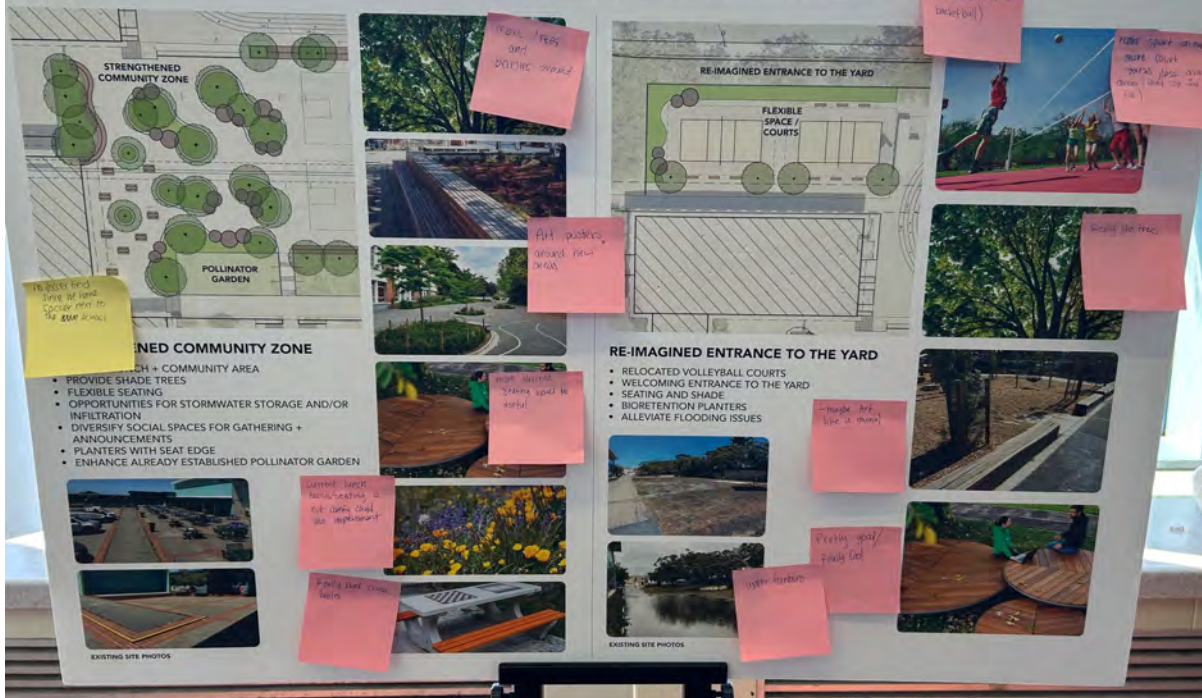
Yard Entrance and Community Zone Board:

- Really like the chess tables
- Current lunch tables/seating is not comfy and could improve
- More flexible seating would be useful
- Art, posters around new areas
- More art - mural
- More trees and benches
- More trees
- "Pretty good"
- Really cool
- Water fountains
- More sport areas (other than basketball)
- More sport areas, more court areas, less gravel areas (slip and fall)
- No soccer field since we have soccer next to the school

Board Photos:



SCHOOLYARD EARLY CONCEPT ENLARGEMENTS | A.P. GIANNINI MS GREEN INFRASTRUCTURE PROJECT





SUMMARY FOR AFTER SCHOOL ENGAGEMENT AT A.P. GIANNINI MIDDLE SCHOOL

School Event – Musical Performance

Meeting Date: February 20th 2025

Time: 4:15 - 6:00pm

Location: AP Giannini

Number of Participants: ~ 40 (parents, students, and teachers)

Project Team in Attendance:

Sarah Bloom, San Francisco Public Utilities Commission, Urban Watershed Planning Division

Patricia Algara, BASE Landscape Architecture

Hannah Greendorfer, BASE Landscape Architecture

NOTES FROM PARTICIPANTS

- Parents and families expressed overall excitement for the initial concept ideas
- Strong support for removing asphalt planters to expand the lunch area and add shade opportunities
- Preference for precedent photos that highlight natural materials for seating platforms, log steppers, and terracing
- Interest in adding tennis courts if space allows
- One mention of St. Anne's bioswales as a successful example for planting choices
- Positive feedback on additional shade, the strengthened community zone, play slopes, and expanded seating opportunities (platforms, planter edge seating, multiuse play tables, and log steppers)
- Pollinator Garden Club: Students and parent volunteers have invested significant effort into the existing pollinator gardens and want these areas preserved and enhanced with specific species – mentioned and documented in other engagements as well
- Excitement for the soccer/playfield
- Interest in permeable pavers or other ways to incorporate water infiltration in hardscape areas
- Likes that the design is preserving the two basketball courts in the lower yard

- Concern about difficulty transporting garden supplies like wheelbarrows and planting materials down the stairs to the APG garden (though this is outside the project scope)
- Positive feedback on the flexible space for tag and running
- Question about the delineation of space for ball sports
- Broken fence identified at the southwest corner of the site

PHOTOS OF BOARDS + ENGAGEMENT



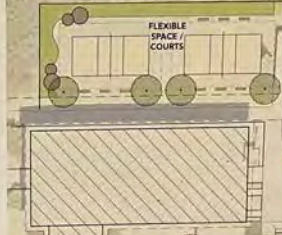
- EXPAND LUNCH + COMMUNITY AREA
- PROVIDE SHADE TREES
- FLEXIBLE SEATING
- OPPORTUNITIES FOR STORMWATER STORAGE AND/OR INFILTRATION
- DIVERSIFY SOCIAL SPACES FOR GATHERING + ANNOUNCEMENTS
- PLANTERS WITH SEAT EDGE
- ENHANCE ALREADY ESTABLISHED POLLINATOR GARDEN



EXISTING SITE PHOTOS



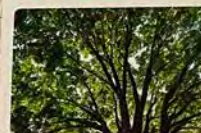
RE-IMAGINED ENTRANCE TO THE YARD



- RELOCATED VOLLEYBALL COURTS
- WELCOMING ENTRANCE TO THE YARD
- SEATING AND SHADE
- BIORETENTION PLANTERS
- ALLEVIATE FLOODING ISSUES



EXISTING SITE PHOTOS

[illegible]

- tag + running around, more planting
- too many basketball courts currently

Question of
delimitation
of space for
sports inf. built

excited about
the soccer
field and
the play slopes

Likes the expanded lunch w/ more seating and shade

permeable
pores for
water infusion

Like the
two basketball
courts @
lower gym
their views
only, difficult
to get materials
down





APG WEB SURVEY QUESTIONS AND SUMMARY OF RESPONSES:

Area #1: Strengthened Community Zone

1. The concept includes expanding the lunch into a larger community area, what types of activities would you like to see here?
 - *(Open ended comment box)*
2. How do you or your students or children currently occupy this area?
 - *(Open ended comment box)*
3. What types of seating would you prefer in this area?
 - *(Multiple choice: multi use picnic tables, benches, seat walls, movable chairs, other)*
4. How important is it to have shade in this space?
 - *(Scale: Not important - Very important)*
5. Do you have any concerns with the proposed layout?
 - *(Open ended comment box)*
6. What additional features would make this space more inviting for community use?
 - *(Open ended comment box)*

Area #2: Re-imagined Entrance to the Yard

1. How welcoming does the current entrance feel to you?
 - *(Scale: Not welcoming - Very welcoming)*
2. What improvements would make the entrance more inviting?
 - *(Multiple choice: More shade, better seating, artwork/murals, lighting, activity, other)*
3. Do you support the relocation of the flexible volleyball courts to improve this area?
 - *(Multiple choice: Yes/No/Not sure and explain why)*
4. What activities would like to be able to do here that aren't currently possible in the proposed layout?
 - *(Open ended comment box)*
5. Any other ideas for how this entrance could feel safer and more accessible?
 - *(Open ended comment box)*

Area #3: Lower Yard Improvements

1. Do you support a small turf soccer field in this space?
 - *(Multiple choice: Yes/No/Not sure and explain why)*
2. If the soccer field was not feasible, what other activities would you want in the lower yard?
 - *(Open ended comment box)*
3. Are there any accessibility concerns you have regarding the space? How might they be improved? (example: pathways, visibility, seating)

- *(Open ended comment box)*
- 4. What kind of seating would be most useful around the play and sports areas?
 - *(Multiple choice: Benches, tiered/terraced seating, picnic tables, other)*
- 5. Do you think incorporating play elements like ropes or climbing features into the slopes would enhance this space?
 - *(Open ended comment box)*
- 6. What other improvements would make this lower yard more enjoyable and functional?
 - *(Open ended comment box)*

Area #4: Improved Planting Zones

1. What types of plants would you like to see in this area?
 - *(Multiple choice: native plants, pollinator friendly flowers, drought tolerant species, shade trees, other)*
2. Are there any concerns you have about planting in this area (example: maintenance, visibility, safety)?
 - *(Open-ended)*
3. What additional features could enhance the experience of this planted areas?
 - *(Open-ended)*

