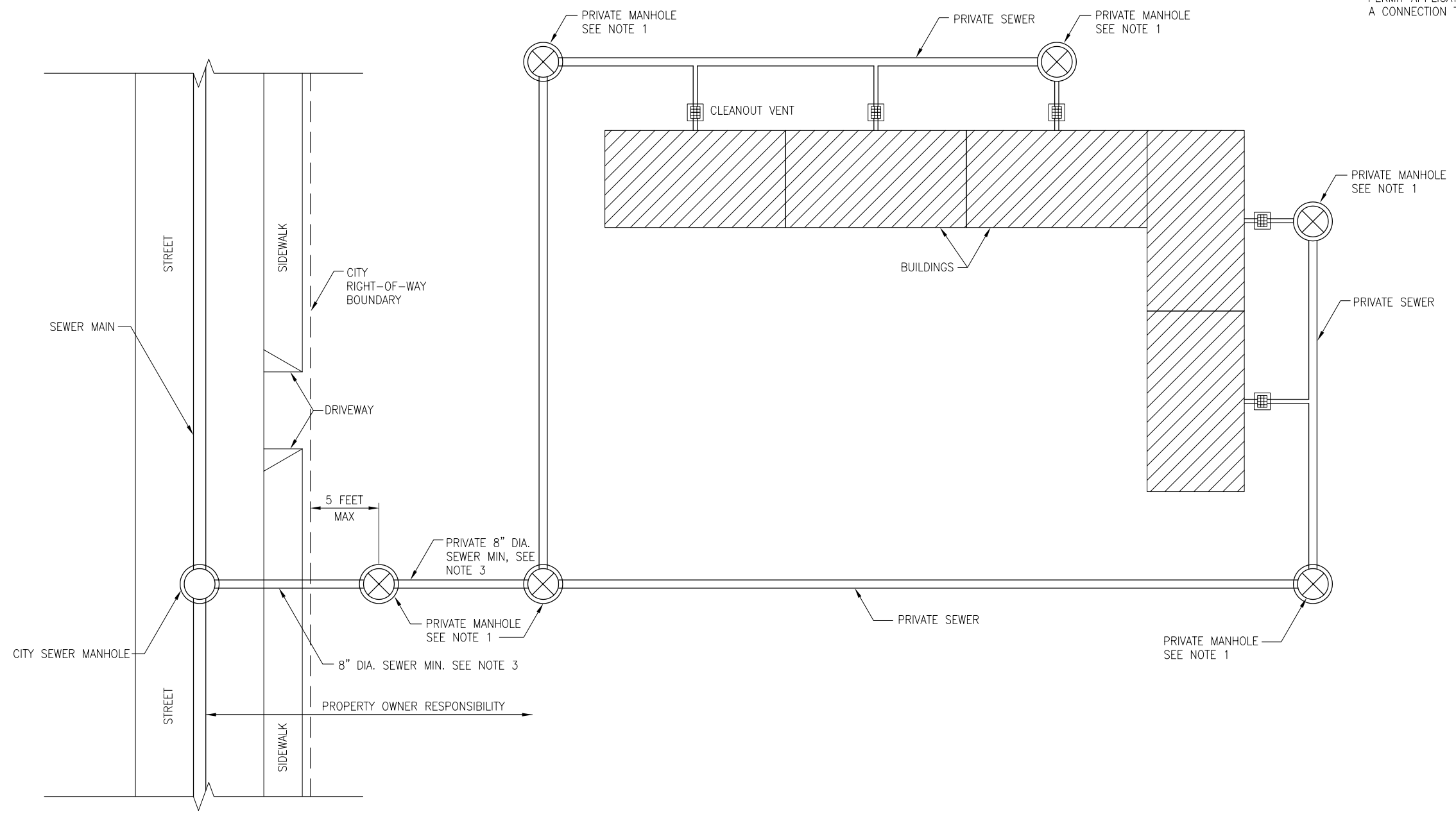


\\woodardclarmann.net\shared\Projects\RM\CSF\002-SFPUC\002-007-SFPUC-WW-CS-955BIB-Task Order\TO 10 - Sewer Lateral Program Phase 1B- Project Work\Task- Revised Standards and Details Completion\Final Submittal\CAD\RevisedSewer Config Figures.dwg



- NOTES:**
1. PRIVATE MANHOLE COVERS SHALL INCLUDE THE LETTERING "PRIVATE SEWER" TO DISTINGUISH FROM SFDPW OR SFPUC STANDARD MANHOLE COVERS.
  2. SAND TRAP DEVICES SHALL BE INSTALLED IN ACCORDANCE WITH THE MOST RECENT SAN FRANCISCO PLUMBING CODE.
  3. PROPERTY OWNER SHALL SUBMIT SEWER CONNECTION PERMIT APPLICATION TO SFPUC FOR WORK THAT INCLUDES A CONNECTION TO THE EXISTING SEWER MAIN.

APPLICABLE TO BOTH  
COMBINED AND SANITARY  
SEWER SYSTEMS



**SEWER LATERAL  
STANDARD DETAILS**  
SAN FRANCISCO PUBLIC UTILITIES COMMISSION

DATE MAY 2017	REVISION 1.0	REVISED
------------------	-----------------	---------

**PRIVATE SEWER LATERAL CONNECTION**