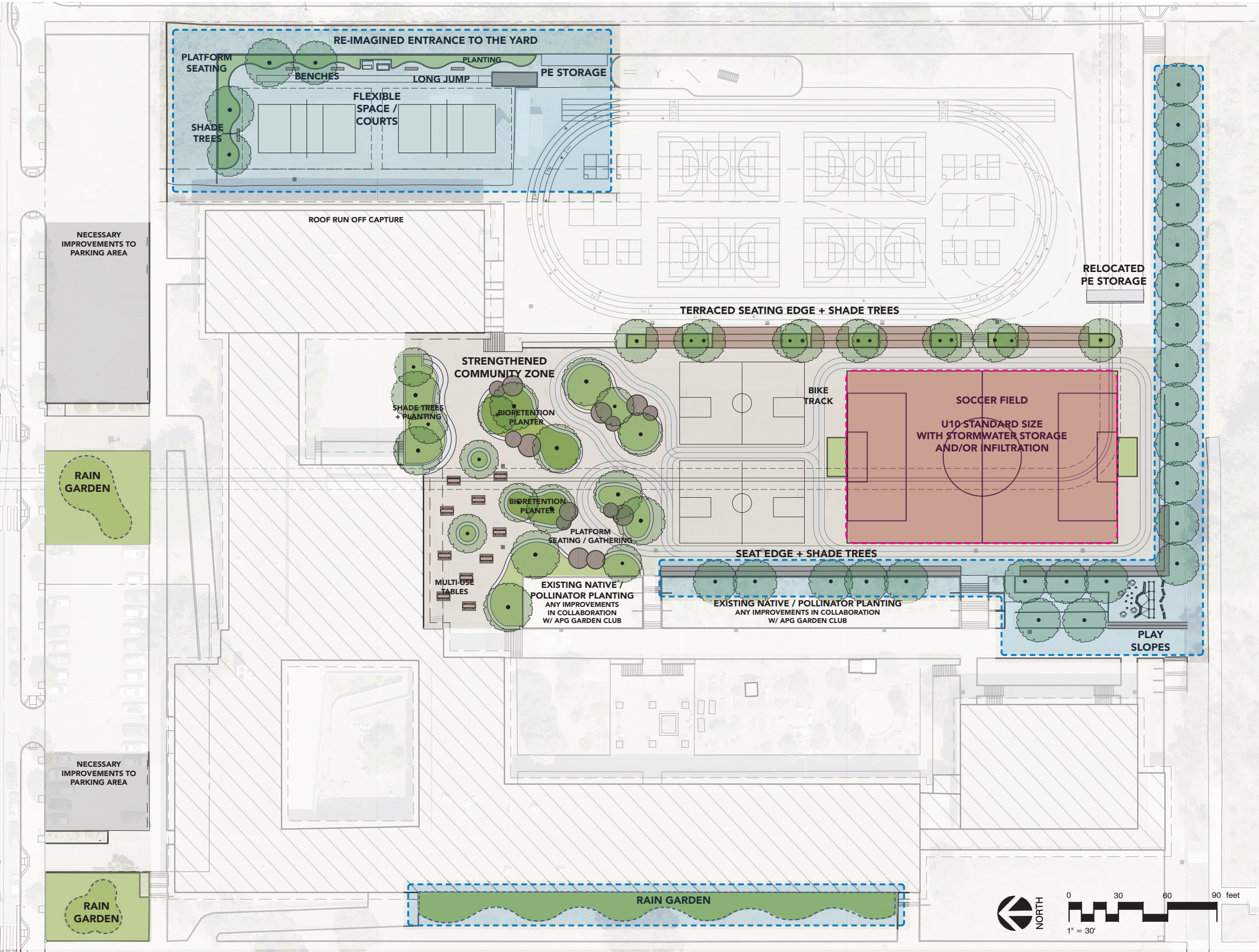


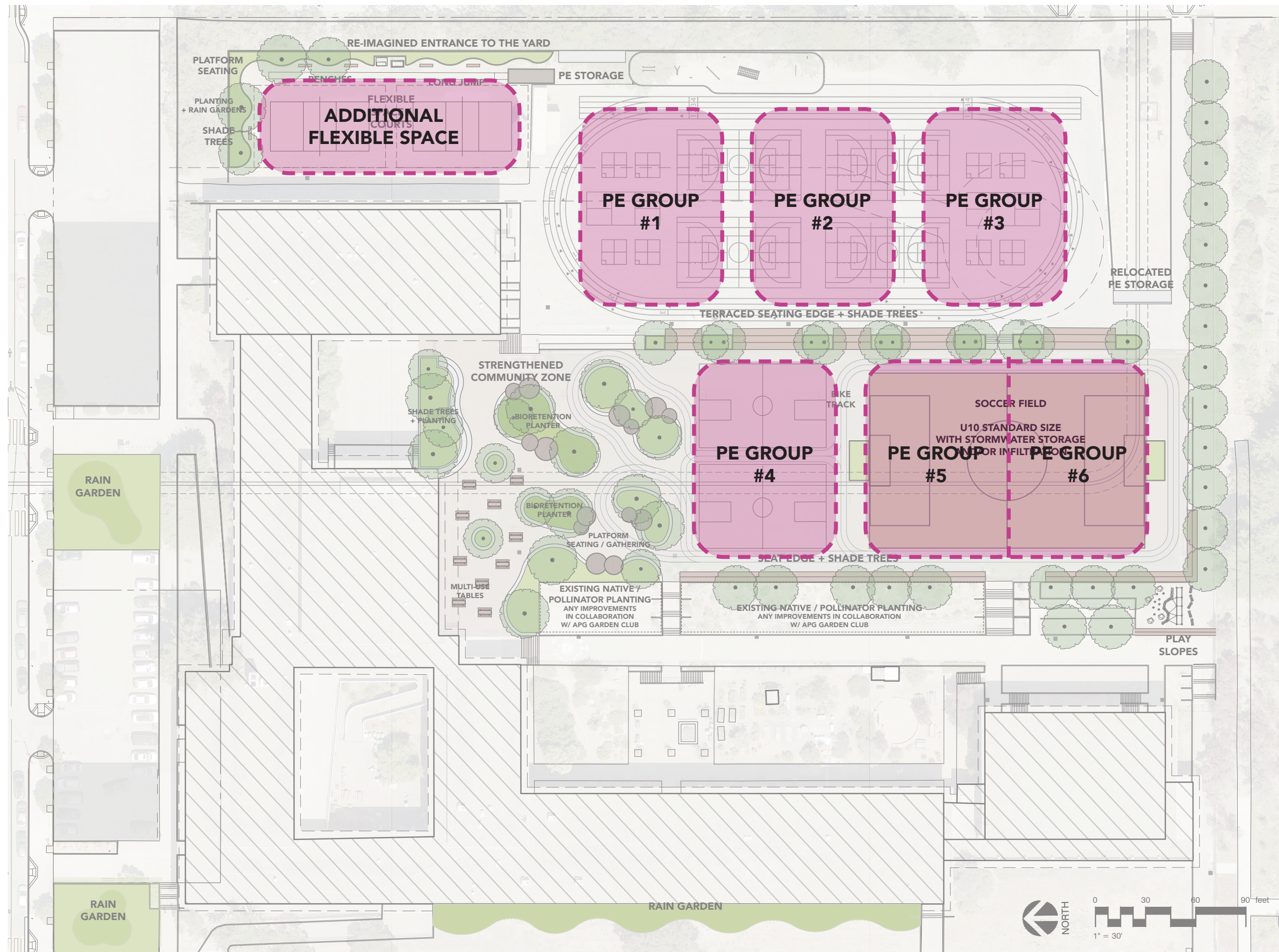
CONCEPT PLAN | Schoolyard Final Concept



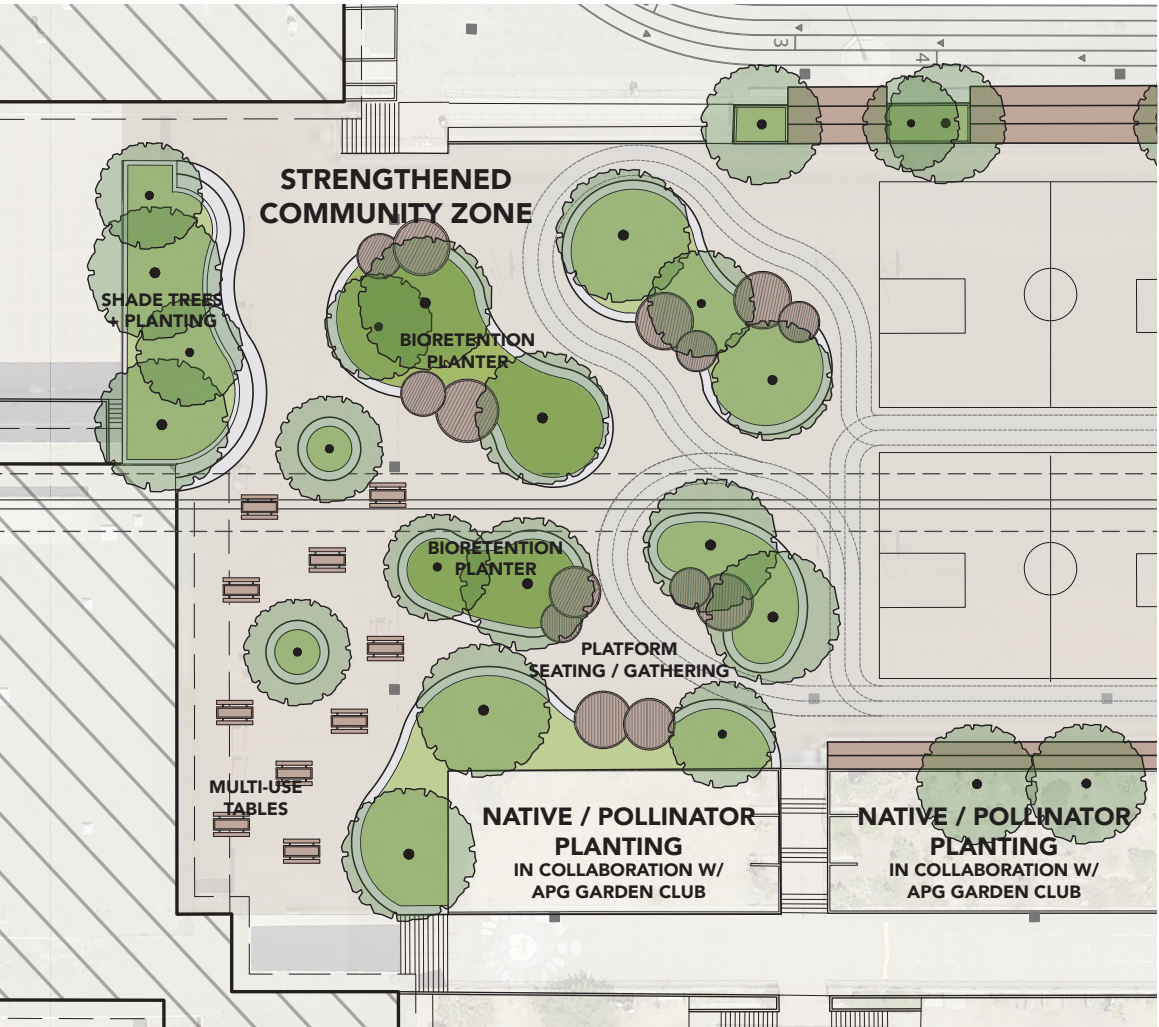
SOCCER FIELD:
FIELD SURFACING MAY
REQUIRE FUNDING BY
OTHERS
(NON-SFPUC DOLLARS)
(TBD FALL 2025)

OTHER AREAS:
ADDITIONAL SCOPES
OF WORK PENDING
CONSTRUCTION COST
ESTIMATE AND FUNDING
AVAILABILITY
(TBD FALL 2025)

3b CONCEPT PLAN | PE Groups



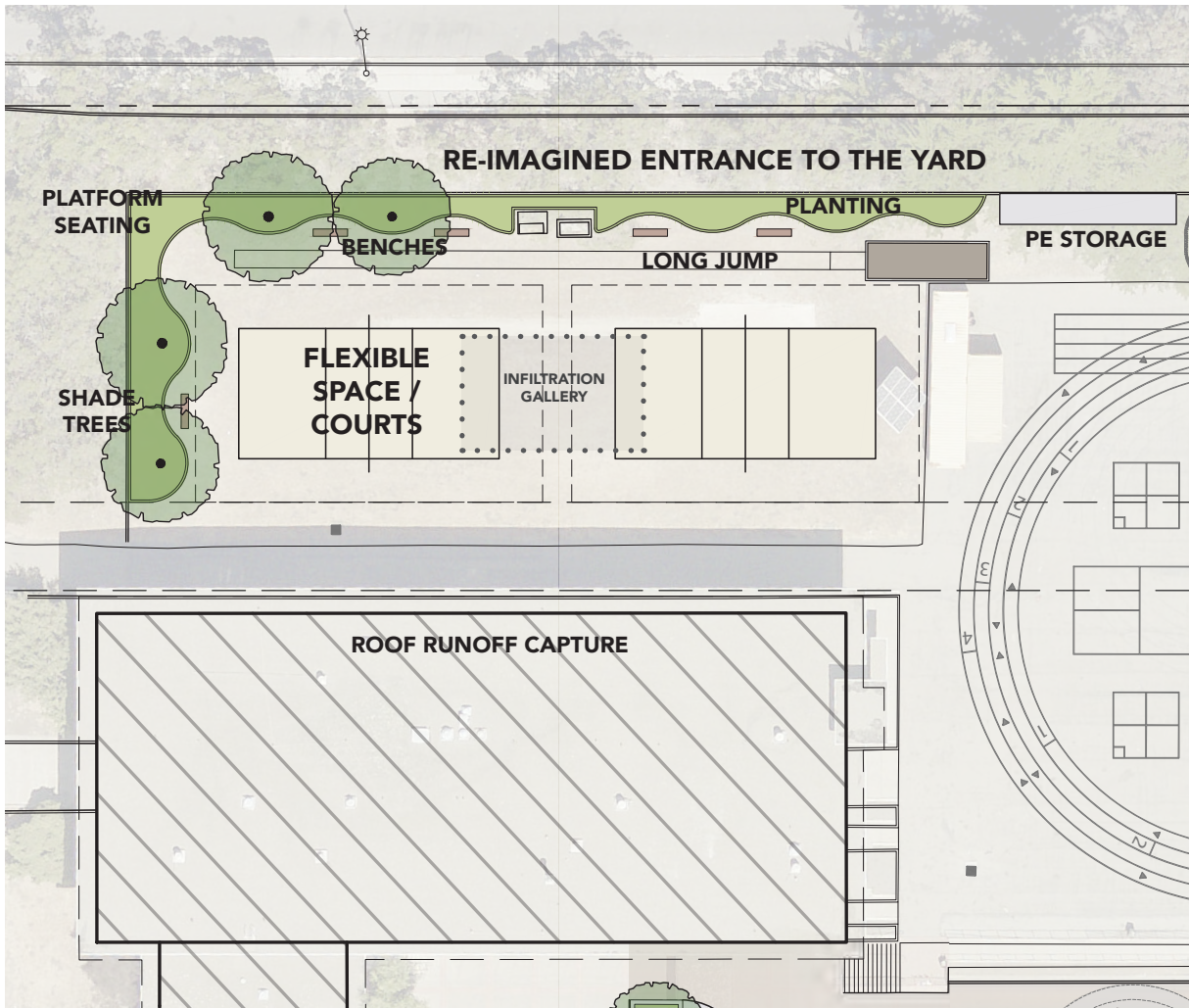
3c CONCEPT PLAN ENLARGEMENT | Strengthened Community Zone



- BIORETENTION PLANTING + STORMWATER INFILTRATION
- EXPAND LUNCH + COMMUNITY AREA
- NEW ASPHALT PAVING
- PROVIDE SHADE TREES
- FLEXIBLE SEATING
- DIVERSIFY SOCIAL SPACES FOR GATHERING + ANNOUNCEMENTS
- PLANTERS WITH SEAT EDGE
- ENHANCE ALREADY ESTABLISHED POLLINATOR GARDEN IN COLLABORATION WITH APG GARDEN CLUB



3d CONCEPT PLAN ENLARGEMENT | Re-Imagined Entrance to the Yard



- POTENTIAL INTERNAL DOWNSPOUT DISCONNECT TO INFILTRATION GALLERY UNDER VOLLEYBALL COURTS
- RELOCATED VOLLEYBALL COURTS
- WELCOMING ENTRANCE TO THE YARD
- SEATING AND SHADE
- ALLEVIATE FLOODING ISSUES



EXISTING SITE PHOTOS



PREFERRED MATERIALS:



CORKEEN -
SOFT PERMEABLE SURFACING FOR
VOLLEY BALL COURTS + LONG JUMP RUN,
CORKEEN IS A NATURAL ALTERNATIVE TO
RUBBERIZED PLAY SURFACE

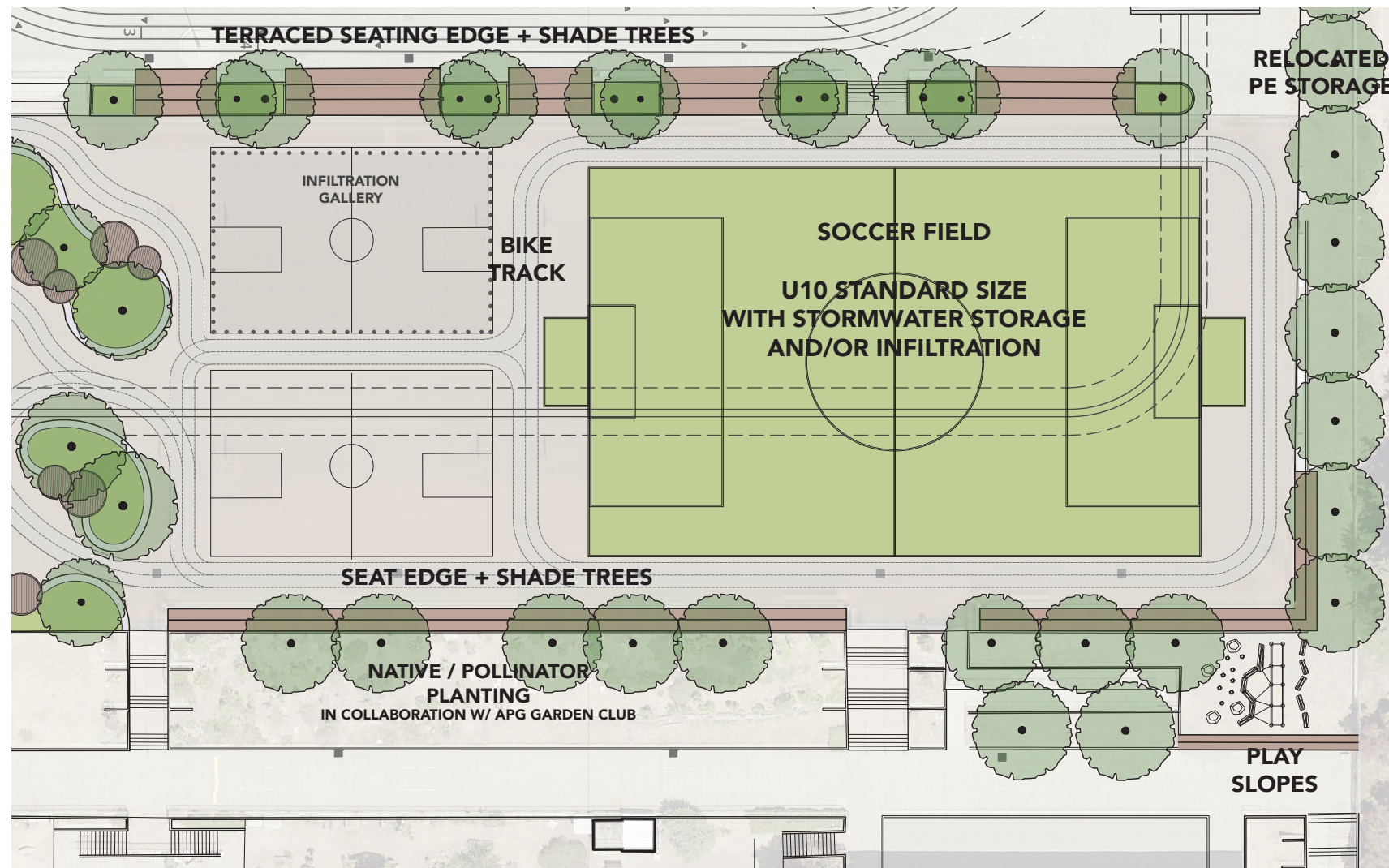


SAND-
SAND PIT ONLY FOR LONG JUMP LANDING



WOOD FIBAR AS AN ALTERNATIVE

3e CONCEPT PLAN ENLARGEMENT | Lower Yard Improvements

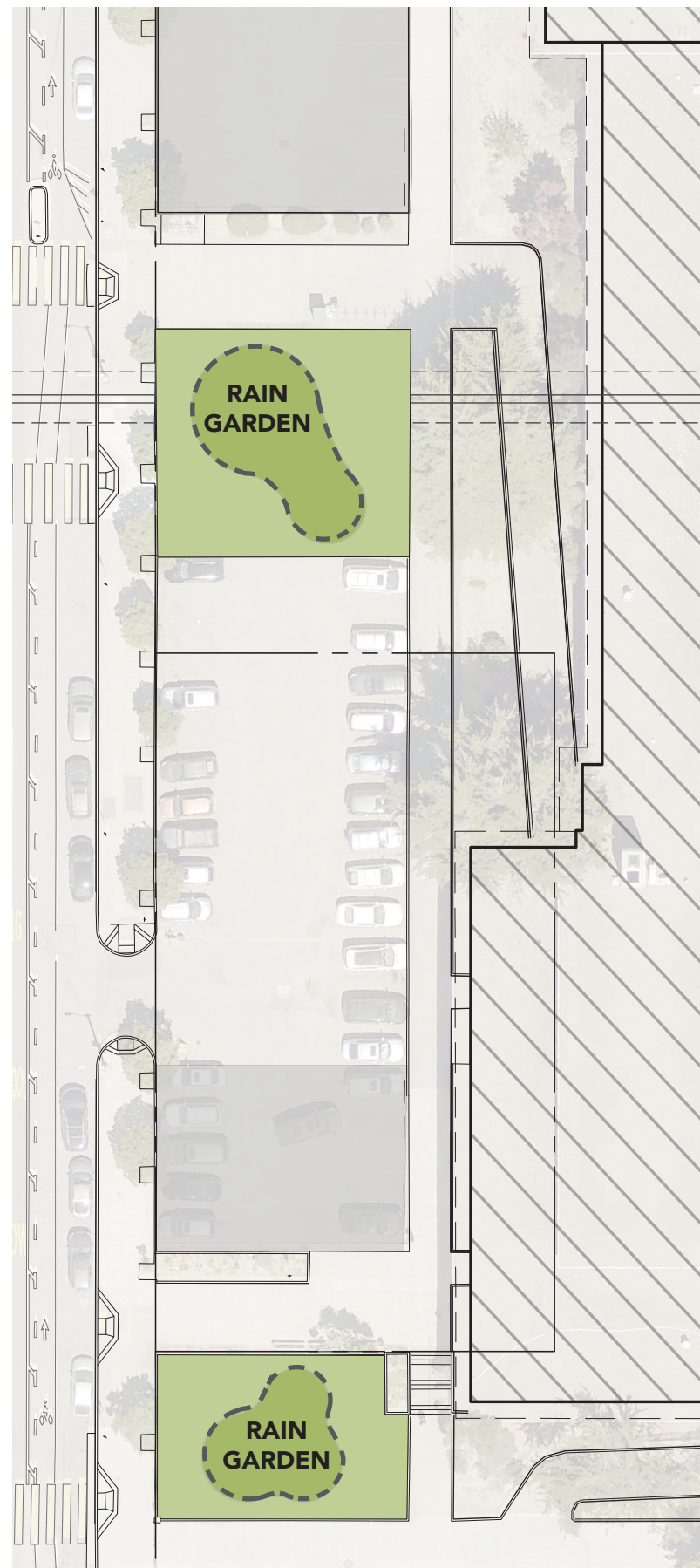


- PROPOSED TURF SOCCER FIELD W/ STORMWATER STORAGE AND/OR INFILTRATION
- INFILTRATION GALLERY COLLECTING RUNOFF FROM UPPER YARD
- MAINTAIN TWO EXISTING BASKETBALL COURTS
- BREAK DOWN EXISTING SLOPE FOR TERRACED SEATING AND SHADE TREES
- EDGE SEATING
- IMPROVED PLANTING, DROUGHT TOLERANT, DURABLE SPECIES
- POTENTIAL PLAY OPPORTUNITY ON EXISTING SLOPE, SUCH AS ROPES OR OBSTACLES



EXISTING SITE PHOTOS





- ALLEVIATE FLOODING ISSUES
- BIORETENTION PLANTING
- CAPTURING ROOF RUNOFF
- ENHANCED SCHOOL ENTRANCE WITH RAIN GARDENS
- OPPORTUNITIES FOR WELCOMING SPACES
- REGRADING OF EXISTING PAVING

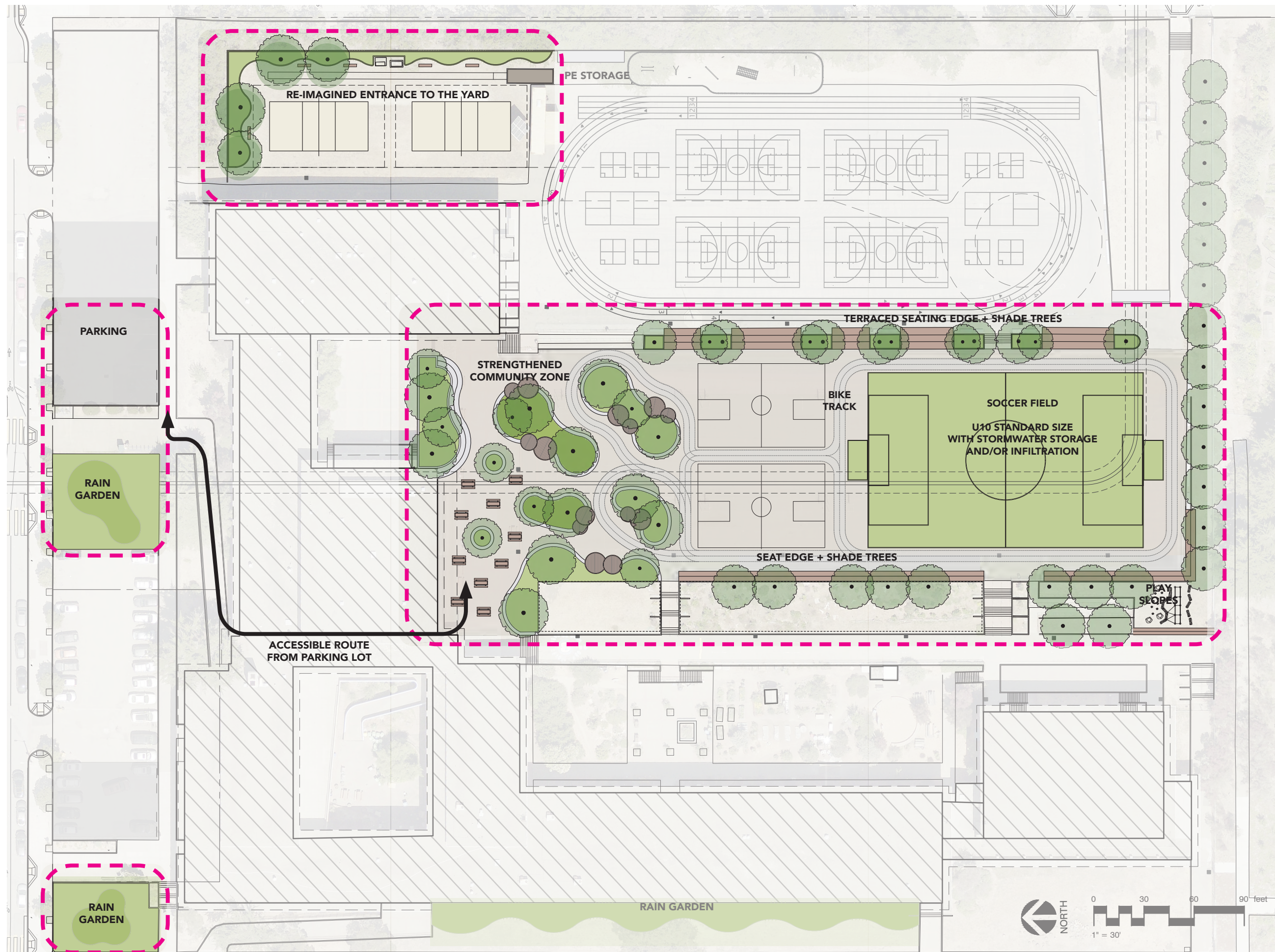


EXISTING SITE PHOTOS



PRECEDENTS

3g CONCEPT PLAN | ADA Considerations



SEATING

- **COMPANION SEATING:**
REQUIREMENTS FOR CLEAR LEVEL WHEELCHAIR SPACE ADJACENT TO SEATWALLS AND BENCHES
- **ACCESSIBLE MULTI-USE TABLES:**
AT LEAST ONE END OR SIDE IS REQUIRED TO BE OPEN TO ALLOW WHEELCHAIR TO ROLL UNDER
- **SHADE:**
AT LEAST SOME ACCESSIBLE SEATING IS LOCATED IN SHADED AREAS

PATHS OF TRAVEL

- **MINIMUM CLEAR WIDTH:**
REQUIREMENTS FOR CLEAR LEVEL WHEELCHAIR SPACE ADJACENT TO SEATWALLS AND BENCHES
- **SURFACING:**
SLIP RESISTANT, NO LOOSE GRAVEL OR DECOMPOSED GRANITE UNLESS STABILIZED
- **MAX SLOPES:**
MAX 5% RUNNING SLOPE FOR PATHS WITHOUT HANDRAILS, 2% MAX CROSS SLOPE
- **DETECTABLE WARNINGS:**
WARNING SURFACES OR BARS AT TRANSITION POINTS FOR THE VISUALLY IMPAIRED

PLAY AREAS

- **TRANSFER PLATFORMS:**
PLAY STRUCTURE MUST BE ACCESSIBLE VIA TRANSFER POINT / PLATFORM OR RAMP
- **ACCESSIBLE SURFACING** NEEDS TO BE DEEMED ADA COMPLIANT

PARKING

- **ACCESSIBLE ROUTE FROM PARKING:**
ALL WATER FOUNTAINS, RESTROOMS, AND GRADING MUST COMPLY WITH ADA STANDARDS ALONG THIS ROUTE