



## WW-756R

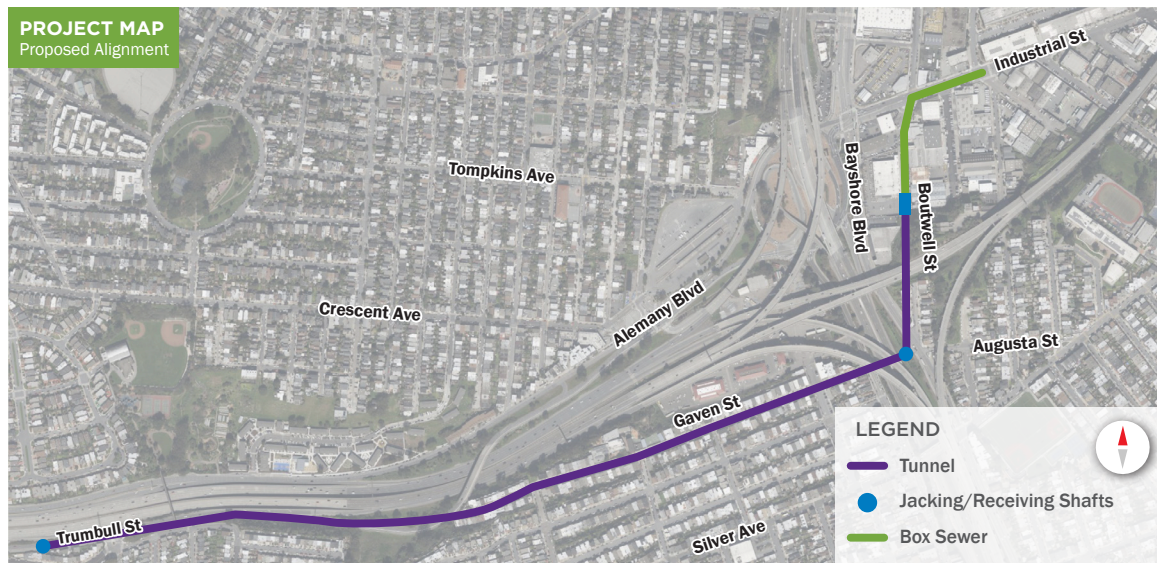
# Lower Alemany Area Stormwater Improvements

The City of San Francisco (City) is required by a negotiated Clean-up and Abatement Order to alleviate local flooding associated with a 5-year return level of service (LOS) storm in the Lower Alemany area of the City. To meet that goal, the City is constructing a new 10-foot inside diameter (ID) combined sewer gravity tunnel and culvert system. The combined sewer flows will be diverted from the existing large box sewer into a new tunnel. The tunnel will proceed down Alemany Boulevard to Gaven Street and along the way will cross under St. Mary’s pedestrian bridge, between five seismically retrofitted footings for the US 101/I-280 interchange, and under I-280 before entering a near-surface box sewer on Boutwell Street. The tunnel will need to be constructed using a closed-face pressurized microtunnel boring machine (MTBM) or tunnel boring machine, and the ground supported with concrete jacking pipe, precast concrete segmental lining, or a combination of the two. The tunnel will be completed with two drives, each with multiple horizontal curves ranging between 1,000- and 1,600-foot radii. The North Drive will be 800 feet long and the West Drive will be 5,500 feet long. Downstream of the tunnel will include a 1,000-foot-long 13-foot-wide by 7-foot- high cast-in-place box sewer, which will continue along Boutwell and Industrial Streets. The downstream end of the box sewer will connect to the existing Barneveld Industrial Connection Structure (BICS) in the intersection of Barneveld Avenue and Industrial Street. The project alignment is shown in Figure 1.

The anticipated scope of work includes the construction of three shafts up to 40 feet in diameter, 1 mile of tunnels under multi-lane highways, connections of three vent shafts along the tunnel, and a 1,000-foot-long cut-and-cover box sewer.

## Anticipated Project Schedule

- The City plans re-advertising the project in April 2026.
- The bid period will be approximately 10 weeks.
- A Notice to Proceed (NTP) is planned for early 2027.
- The new Auxiliary Sewer must be commissioned and operational by February 2031.



Scan the QR codes for more information!



English



Español



Filipino



中文