

## Hetch Hetchy Regional Water System

The Hetch Hetchy Regional Water System serves drinking water to 2.7 million people in San Mateo, San Francisco, Santa Clara, and Alameda counties. Communities on the Peninsula are served by several important water transmission pipelines and reservoirs (see map). The San Andreas Pipeline Numbers 2 and 3 and the Sunset Supply Branch Pipeline transmit water from our Peninsula Watersheds that has been treated at the Harry Tracy Water Treatment Plant to more than 1 million northern Peninsula customers. In addition, the Crystal Springs Pipelines transmit water from the Hetch Hetchy Regional Water System to University Mound Reservoir in San Francisco. Some of these pipes are some of the oldest and most critical pipelines in the Peninsula Water transmission system.

### Project Schedule

Construction start: April 2019  
Construction anticipated completion: Summer 2021

### About the SFPUC

The San Francisco Public Utilities Commission (SFPUC) is a department of the City and County of San Francisco that owns and operates the Hetch Hetchy Regional Water System. That system provides drinking water to 2.7 million people in Alameda, Santa Clara, San Mateo, and San Francisco counties.

Stay up to date at [sfwater.org/peninsula](http://sfwater.org/peninsula)

Steve Kech  
(415) 554-3289, [skech@sfwater.org](mailto:skech@sfwater.org)

Betsy Lauppe Rhodes  
(415) 554-3240, [blauppe@sfwater.org](mailto:blauppe@sfwater.org)

## Background

These four segments of the San Andreas Pipeline No. 2 in San Bruno follow up on the soon to be completed Water System Improvement Program (WSIP) to provide minimum day demand to our customers within 24 hours after a major earthquake. Approximately 4.4 miles of the San Andreas Pipeline number 3 and about 5.2 miles of Crystal Springs Pipeline Number 2 were replaced by WSIP. Project: San Andreas Pipeline Number 2 in San Bruno

## San Andreas Pipeline Number 2 in San Bruno Project

### Replacement of four segments identified by routine inspections

As part of regular maintenance and inspections of our major transmission lines, SFPUC has identified sections of the San Andreas Pipeline Number 2 within the City of San Bruno that are almost 90-years-old and in need of rehabilitation. The project consists of replacing about 6,500 ft. of the 54-inch diameter steel pipeline at four locations. The \$32 million contract has been awarded to Ranger Pipelines which expects to begin construction in Spring 2019.

### What To Expect During Construction

Construction activities will primarily consist of 'open trench' with 'trenchless' installations at major street crossings to the extent feasible due to local site conditions and constraints. The construction work will generally occur Monday through Friday between 8:00 a.m. and 5:00 p.m. The contractor will work to minimize noise and dust generation and impacts to the local traffic.

#### Open Trench:

- Excavation of Trench along existing alignment
- Demolish / off-haul existing pipe
- Install new pipe in trench
- Weld it and install lining and joints and appurtenances
- Hydrostatic test to ensure pipe is without leaks

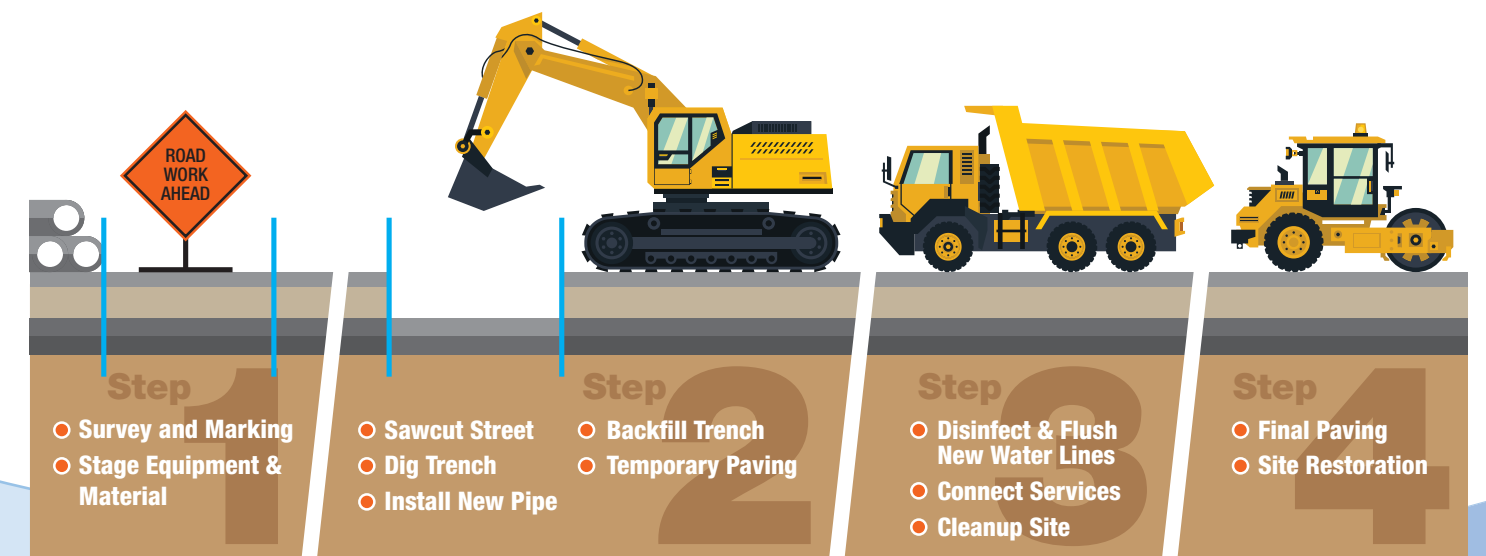
- Backfill trench and restore right of way to preconstruction conditions.

#### Trenchless (slip-lining):

- Road crossings at San Bruno Avenue, Cherry Avenue and Sneath Lane.
- A minimum of two pits would be constructed: one at the receiving end and one at the driving end of the area of pipe to be replaced (slip-lined).
- Restoration of the pits' areas to preconstruction conditions

We will work closely with the local cities and neighbors to minimize local disruptions as much as possible.

### Water Main Pipe Installation Steps



# Construction Areas

## Segment 1:



Replacement of about 2370 feet from the Harry Tracy Water Treatment Plant to a location near the entrance to Junipero Serra Park at Crystal Springs Road.

## Segment 2:



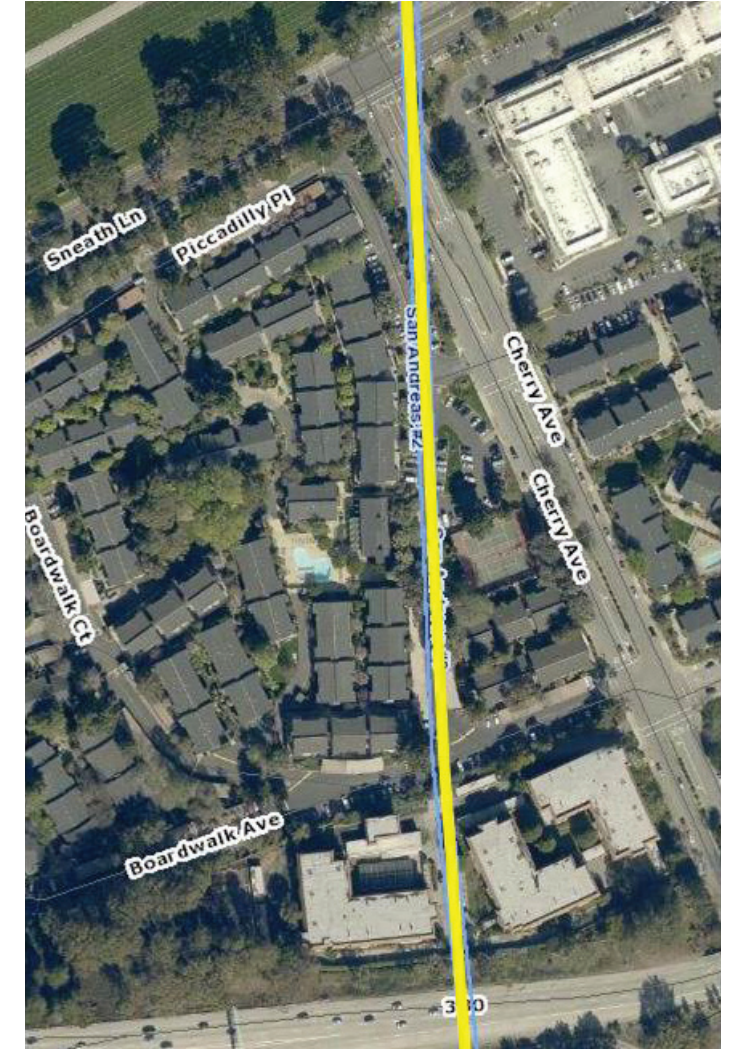
A total of about 800 feet along Courtland Drive between San Bruno High School and the San Bruno Chinese Church.

## Segment 3:



Replacement of 1510 feet from South I-280 off-ramp at San Bruno Ave along the western edge to Bayhill Shopping Center.

## Segment 4:



A total of about 1145 ft from Cherry Ave, through the Cherry Avenue Villas and Peninsula Place Homeowners apartments to Sneath Lane at the Golden Gate National Cemetery.