



New Operations, Engineering, and Maintenance Buildings Project

Pictured above: Rendering New Operations, Engineering, and Maintenance Buildings

Our Sewer System Upgrades are Underway

Built in 1952, the Southeast Treatment Plant is the City's largest wastewater treatment facility, but many of its facilities are past their useful life and generate odors that impact the neighborhood. We are investing over \$3 billion in critical upgrades to transform this facility into a modern resource recovery center. By doing so, we will continue to protect our communities and environment while creating an attractive workplace and neighborhood asset.

New Operations, Engineering, and Maintenance Buildings

The Operations, Engineering and Maintenance Buildings Project will provide much-needed workspace, offices, and maintenance area for SFPUC staff at the Southeast Treatment Plant. The project – at the north corner of Jerrold Avenue and Phelps Street – will replace an existing building that is beyond its service life, as well as two temporary office trailers.

Like many of the treatment facilities at the Southeast Treatment Plant, the buildings that house SFPUC staff who operate and maintain the plant are well past their useful life, and the cost to maintain these outdated facilities continues to rise.

The new staff buildings will help meet operating needs and support efforts to maximize the efficiency and value of the Southeast Treatment Plant. This is essential to supporting the SFPUC Wastewater Enterprise's long-term business plan and ensuring delivery of services for the next generation while also investing responsibly and continuing to be strong environmental stewards in the Bayview neighborhood.

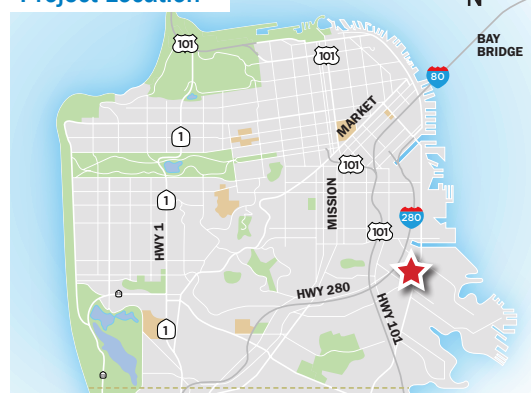


PROJECT MILESTONES

- ✓ **Project Approval**
January 2025
- ✓ **Start of Construction**
Summer 2025
- ✓ **Expected Completion**
Fall 2028*

**Subject to change*

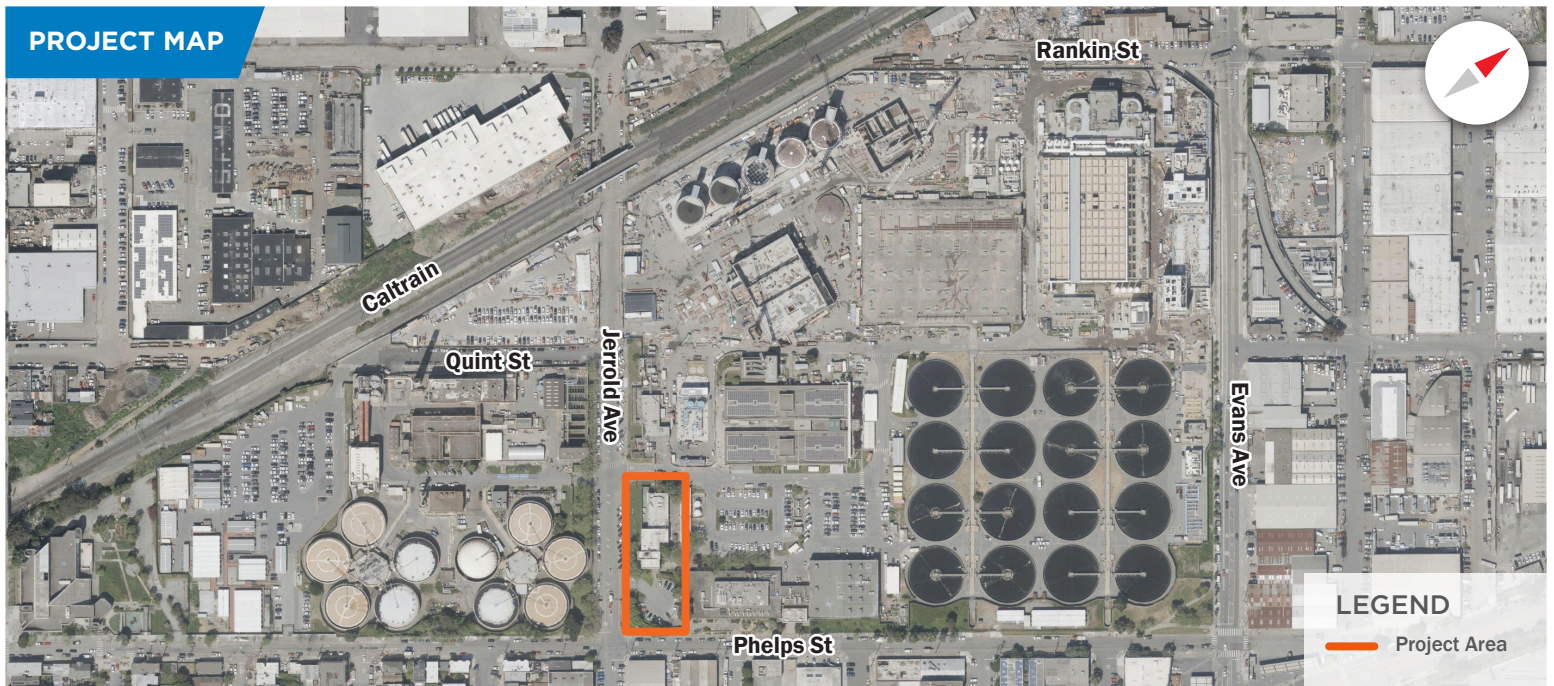
Project Location



FAST FACTS

First mass timber building designed and built by City and County of San Francisco. Compared to traditional construction material such as steel and concrete, mass timber is a more environmentally friendly building material with a lower carbon footprint.

PROJECT MAP



PROJECT BENEFITS

- Increase operational efficiencies
- Provide much needed workspaces for staff
- Consolidate and eliminate remote work sites
- Improve occupational safety
- Provide construction opportunities for Local Business Enterprises and San Francisco residents.



Rendering New Operations, Engineering, and Maintenance Buildings

About the SFPUC & Our Combined Sewer System

We are the San Francisco Public Utilities Commission (SFPUC), a not-for-profit public utility providing San Francisco with water, power, and sewer services. Every day we collect and treat both sewage and stormwater from homes and businesses to protect public health and the environment. This project is part of the SFPUC's Wastewater Capital Improvement Program to upgrade and modernize San Francisco's combined sewer system for current and future generations. sfpuc.gov/ssip

Learn More

 Project Questions: **(415) 551-4SEP (4737)**

 ssip@sfgwater.org

 For more information:
sfpuc.gov/sepconstruction

Para una copia de este material en español o para más información, por favor póngase en contacto con nosotros al (415) 554-3289 o info@sfgwater.org.

拿取這些資料的中文副本,或詢問其他資料,請致電 (415) 554-3289 或電郵 info@sfgwater.org.

Kung kailangan ninyo ng tulong sa Filipino mangyaring tumawag sa (415) 554-3289, info@sfgwater.org.