



Pictured above: New Headworks Facility Project Construction

Our Sewer System Upgrades are Underway

Built in 1952, the Southeast Treatment Plant (SEP) is the City's largest wastewater treatment facility, but many of its facilities are past their useful life and generate odors that impact the neighborhood. We are investing over \$3 billion in critical upgrades to transform this facility into a modern resource recovery center. By doing so, we will continue to protect our communities and environment while creating an attractive workplace and neighborhood asset.

What is the Headworks Facility?

The Headworks Facility is where the wastewater flows enter the treatment plant, and debris (such as bricks) and grit (like sand) are removed. This process is critical to protect downstream equipment, help control odors, and ensure that the SEP can operate efficiently.

New Headworks Facility Project

The New Headworks Facility Project will construct a new Headworks facility, upgrade the Bruce Flynn Pump Station to operate in all weather conditions, and construct a new odor control structure.

What Does the Bruce Flynn Pump Station Do?

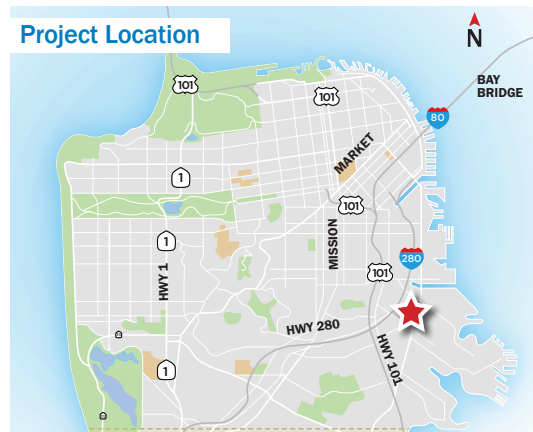
The Bruce Flynn Pump Station is where wet-weather combined wastewater and stormwater flows from San Francisco's east side are pumped into the SEP.



PROJECT MILESTONES

- ✓ **Start of Construction**
Spring 2018
- ✓ **Institute for Sustainable Infrastructure**
Envision Gold Award Winner 2019
- **Expected Completion**
Summer 2025

Project Location



Fast Facts

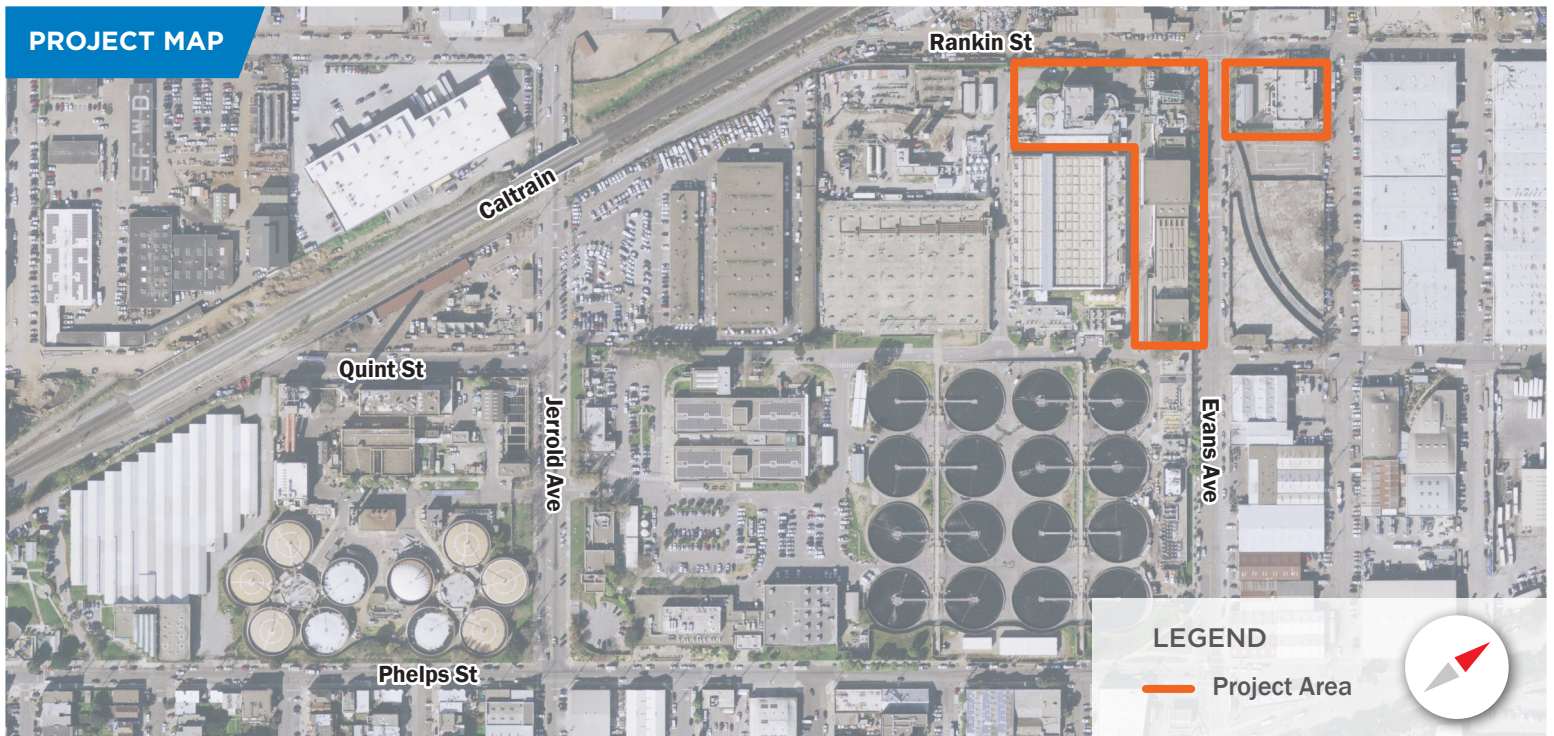
80%

of City's Wastewater
Treated at SEP

250MGD
Million Gallons Per Day

New Headworks
Facility Capacity

PROJECT MAP



PROJECT BENEFITS

- Continue to protect public health and the environment.
- Minimize odors using advanced odor control equipment.
- Improve operational reliability and flexibility.
- Increase efficiency of treatment processes and protect downstream equipment.
- Improve the ability for these critical facilities to withstand a 7.8 earthquake on the San Andreas Fault.
- Fund public art by local artists in support of the Bayview Arts Master Plan.
- Provide opportunities for local workers and businesses.

Funding for this project has been provided in full or in part through an agreement with the State Water Resources Control Board. California's Clean Water State Revolving Fund is capitalized through a variety of funding sources, including grants from the United States Environmental Protection Agency and state bond proceeds. The contents of this document do not necessarily reflect the views and policies of the foregoing, nor does mention of trade names or commercial products constitute endorsement or recommendation for use.

About the SFPUC & Our Combined Sewer System

We are the San Francisco Public Utilities Commission (SFPUC), a not-for-profit public utility providing San Francisco with water, power, and sewer services. Every day we collect and treat both sewage and stormwater from homes and businesses to protect public health and the environment. This project is part of the SFPUC's Wastewater Capital Improvement Program to upgrade and modernize San Francisco's combined sewer system for current and future generations. sfpuc.gov/ssip

Learn More

 [\(415\) 551-4SEP \(4737\)](tel:(415)551-4SEP)

 ssip@sfgwater.org

 sfpuc.gov/headworks
sfpuc.gov/SEPConstruction

Para una copia de este material en español o para más información, por favor póngase en contacto con nosotros al (415) 554-3289 o info@sfgwater.org.

拿取這些資料的中文副本,或詢問其他資料,請致電 (415) 554-3289 或電郵 info@sfgwater.org.

Kung kailangan ninyo ng tulong sa Filipino mangyaring tumawag sa (415) 554-3289, info@sfgwater.org.