



Pictured above: Aerial drone overview of Headworks Facility.

New Headworks Facility

Sewer System Upgrades

Built in 1952, the Southeast Treatment Plant is the City's largest wastewater treatment facility, handling nearly 80% of San Francisco's combined stormwater and wastewater every year. It is essential to protecting public health and the environment, but many of its facilities were outdated, seismically vulnerable, and at risk of sea level rise before the SFPUC initiated major upgrades. The SFPUC is investing over \$5 billion in critical upgrades that are transforming this treatment plant into a resilient, modern resource recovery center.

What is the Headworks Facility?

The Headworks Facility is where stormwater and wastewater flows enter the treatment plant, and debris (such as bricks) and grit (like sand) are removed. This process is critical to protecting downstream equipment, helping control odors, and ensuring the plant can operate efficiently – saving ratepayer dollars.

New Headworks Facility

The new \$717 million Headworks Facility replaces and consolidates two former headworks operations at the Southeast Treatment Plant. It also includes improvements to the Bruce Flynn Wet Weather Pump Station, enabling it to operate year-round and ensure our system continues to protect public health and San Francisco Bay.

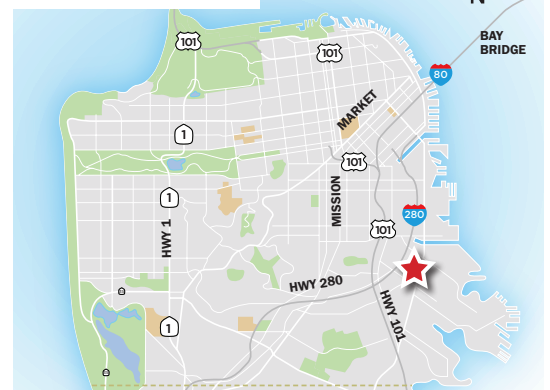
On average, the new Headworks Facility treats about 45 million gallons of wastewater per day, enough to fill 68 Olympic-sized swimming pools. During storms, it can handle flows that surge to more than 5.5 times that amount – as much as 250 million gallons per day.



ACHIEVEMENTS

- ✓ **Construction Timeline**
2018 - 2025
- ✓ **Water Environment Federation**
Project Excellence Award
2025
- ✓ **Institute for Sustainable Infrastructure**
Envision Gold Award
Winner 2019

Headworks Location



Fast Facts

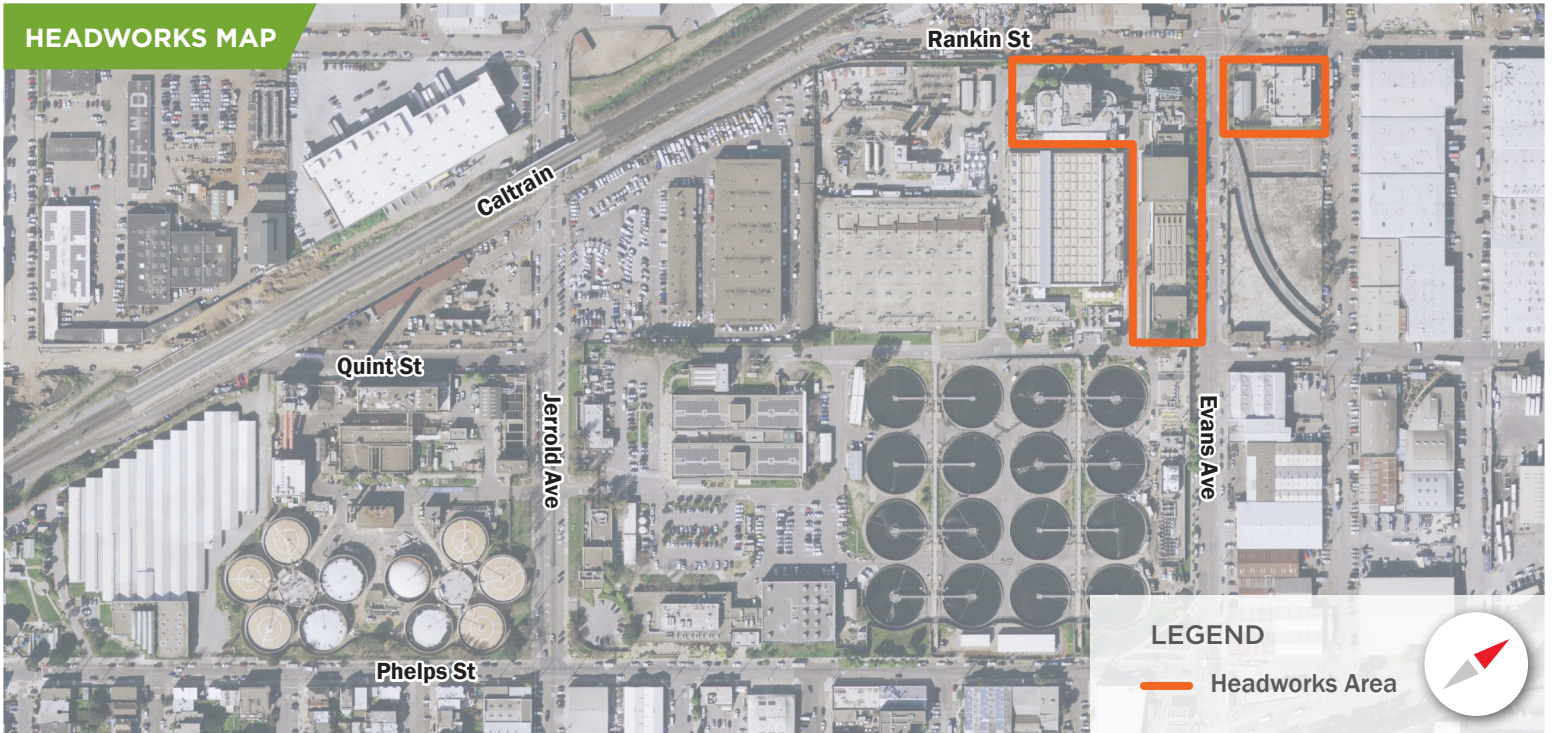
80%

of City's wastewater
treated here

250MGD
Million Gallons Per Day

New Headworks
Facility capacity

HEADWORKS MAP



HEADWORKS BENEFITS

- Protects public health and the environment.
- Improves long-term reliability and reduces maintenance costs, saving ratepayer dollars.
- Reduces odors using advanced odor technology.
- Built to withstand a 7.8-magnitude earthquake.
- Removes grit with 95% efficiency – a 45% improvement over the previous system.
- Features public art wall to enhance neighborhood vibrancy.
- Exceeded local hiring requirements and awarded contracts to local businesses, supporting jobs and community investment.
- Employed 615 San Francisco residents who collectively worked 414,000 hours and earned \$34 million in wages and benefits.

Funding for this project has been provided in full or in part through an agreement with the State Water Resources Control Board. California's Clean Water State Revolving Fund is capitalized through a variety of funding sources, including grants from the United States Environmental Protection Agency and state bond proceeds. The contents of this document do not necessarily reflect the views and policies of the foregoing, nor does mention of trade names or commercial products constitute endorsement or recommendation for use.

About the SFPUC & Our Combined Sewer System

We are the San Francisco Public Utilities Commission (SFPUC), a not-for-profit public utility providing San Francisco with water, power, and sewer services.

Every day we collect and treat both stormwater and wastewater from homes and businesses in a combined sewer system to protect public health and the environment.

This project is part of the SFPUC's Wastewater Capital Improvement Program.

Learn More

 [\(415\) 551-4SEP \(4737\)](tel:(415)551-4SEP(4737))

 ssip@sflower.org

 sfpuc.gov/headworks
sfpuc.gov/SEPConstruction

Para una copia de este material en español o para más información, por favor póngase en contacto con nosotros al (415) 554-3289 o info@sflower.org.

拿取這些資料的中文副本,或詢問其他資料,請致電 (415) 554-3289 或電郵 info@sflower.org.

Kung kailangan ninyo ng tulong sa Filipino mangyaring tumawag sa (415) 554-3289, info@sflower.org.